

**Get better at Math.
Get better at
everything.**



Come experience the Cuemath methodology and ensure your child stays ahead at math this summer.



**Adaptive
Platform**



**Interactive Visual
Simulations**



**Personalized
Attention**

For Grades 1 - 10

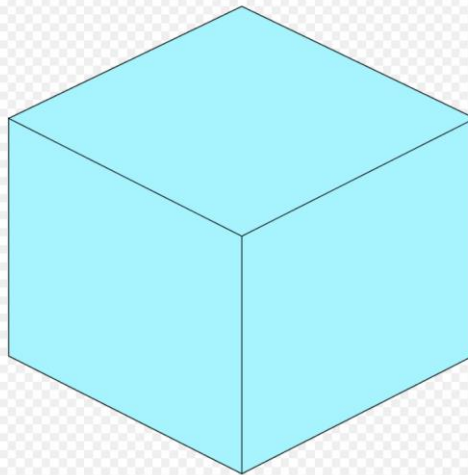


LIVE online classes
by trained and
certified experts.

Get the Cuemath advantage

Book a FREE trial class

1. Find the volume of the cube if the diagonal of the cube measures $4\sqrt{3}$ units.
2. The length of an edge of a hollow cube open at one face is 5 metres. What is the length of the largest pole that it can accommodate?
(a) $5\sqrt{3}m$ (b) $3m$ (c) $3\sqrt{3}m$ (d) $3/\sqrt{3}m$
3. If each edge of a cube is increased by 20%, find the percentage increase in the volume of the cube?
(a) 150% (b) 50% (c) 72.8% (d) 68.2%



4. The capacity of a tank of dimensions (6m X 5m X 4m) is:
(a) 120 cubic meters (b) 1200 cubic meters
(c) 12000 cubic meters (d) 120000 cubic meters
5. Calculate the volume of a cylinder having a radius of 3 units, and a height of 7 units.
6. Find the volume of a sphere of radius 12 units.
7. Find the cost of digging a cuboidal pit 8m long, 6m broad and 3m deep at the rate of \$.30 per m^3 .
8. A conical tent is 10m high and the radius of its

base is 24m. Find the slant height of the tent.

9. The volume of the right circular cone having a radius of 6 cm and height of 7cm is _____.
10. The water flows at a speed of 2m/sec from a pipe square pipe of side 1 meter. Find the amount of water which flows out from the pipe in 3 minutes.
11. The curved surface of a right circular cone of height 15cm and base diameter 16cm is:
(a) 60π sq cms (b) 68π sq cms (c) 125π sq cms
(d) 136π sq cms



12. The volume of a sphere is 288π cu cms. Its curved surface area is:
(a) 100π sq cms (b) 125π sq cms (c) 144π sq cms
(d) 150π sq cms
13. The length, breadth, and height of a rectangular box are in the ratio 3 : 2 : 1. If the height of the box is 10 units, find the volume of the rectangular box.
14. The side of a cube having a volume of 512 cubic units is _____.
15. A cylindrical tank has a radius of 5 units and a height of 14 units. Find the volume of the cylindrical tank.
16. Find the ratio of the volumes of a sphere and a hemisphere, each having a radius of 17 units.
17. 20 men took a dip in a water tank 20m long and 10m broad on a religious day. If the average displacement of water by a man is 4 cu m, then find the rise in the water level in the tank.

(a) 2 m (b) 2.5 m (c) 3.5 m (d) 5 m

18. How many cubic boxes of side 2 cms, be placed in a large cubic box of side 4 cms.

(a) 2 (b) 4 (c) 8 (d) 16

19. The side of a cube is doubled. The percentage change in the volume of the cube is _____.

20. Find the number of lead balls, each 1 cm in diameter that can be made from a sphere of diameter 12cm.

(a) 748 (b) 2128 (c) 1736 (d) 1800

**When you learn math
in an interesting way,
you never forget.**



25 Million

Math classes &
counting

100K+

Students learning
Math the right way

20+ Countries

Present across USA, UK,
Singapore, India, UAE & more.

Why choose Cuemath?

"Cuemath is a valuable addition to our family. We love solving puzzle cards. My daughter is now visualizing maths and solving problems effectively!"

- Gary Schwartz

"Cuemath is great because my son has a one-on-one interaction with the teacher. The instructor has developed his confidence and I can see progress in his work. One-on-one interaction is perfect and a great bonus."

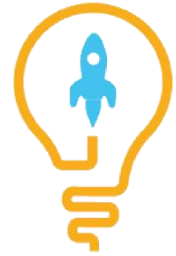
- Kirk Riley

"I appreciate the effort that miss Nitya puts in to help my daughter understand the best methods and to explain why she got a problem incorrect. She is extremely patient and generous with Miranda."

- Barbara Cabrera

Get the Cuemath advantage

Book a FREE trial class

**ANSWERS**

1)	64 cubic units
2)	(a) $5\sqrt{3}$ metres
3)	(c) 72.8%
4)	(a) 120 cubic units
5)	198 cubic units
6)	2304π cubic units

7)	\$ 4320
8)	26m
9)	264 cubic cms
10)	360 cubic meters
11)	(d) 136π sq cms
12)	(c) 144π sq cms
13)	6000 cubic units

14)	8 units
15)	350π cubic units
16)	2 : 1
17)	(b) 2.5m
18)	(c) 8
19)	700%
20)	(b) 2128

FUN FACT

1. Volume is a three dimensional quantity which helps to measure the space, and has a unit of cubic units.
2. Comparing the volume of the earth and the sun, about 1.3 million earths can fit in the sun.
3. The volume of one cubic meter is equal to 1000 liters.

