

Get better at Math.  
Get better at  
everything.



Come experience the Cuemath methodology and ensure your child stays ahead at math this summer.



**Adaptive  
Platform**



**Interactive Visual  
Simulations**



**Personalized  
Attention**

For Grades 1 - 10



LIVE online classes  
by trained and  
certified experts.

Get the Cuemath advantage

**Book a FREE trial class**

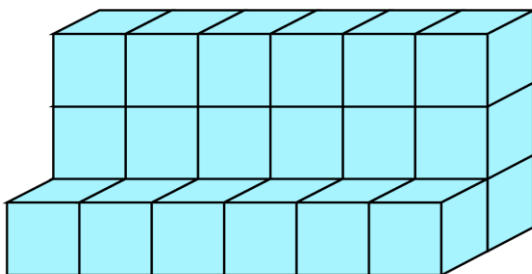
## Volume Of Cubes Worksheets

- 1) Find the volume of a cube whose each side measures:  
a) 8 in  
b) 4.5 in
- 2) Each side of a dice measures 6 mm. Calculate the volume of dice.

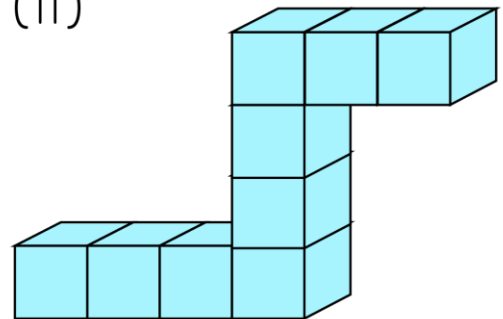


- 3) A cubical milk tank can hold 125000 liters of milk. Find the length of its side in meters.
- 4) How many cubes of 5 cm are equivalent in volume to a 15 cm cube?
- 5) Find the volume of the given figures. Take the volume of each small cube as 4 cu cm.

(i)

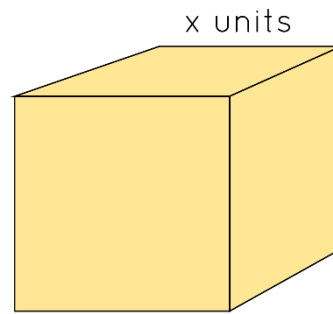


(ii)



- 6) Fill in the blank:  
Volume of a cube of the side 19 m is \_\_\_\_\_.

7) Find the value of  $x$ .



Volume = 343 cubic units

8) Kevin's bookshelf is cubical shapes with each side measuring 2.5 ft. What is the volume of the bookshelf?

9) A cuboid is 9 cm long, 6 cm broad, and 5 cm high and a cube has an edge of 7 cm. Which one has a greater volume?

10) Match the columns:

Edge of Cube	Volume
1. 12 in	(i) $27 \text{ in}^3$
2. 3 in	(ii) $1728 \text{ in}^3$
3. 10 in	(iii) $1000 \text{ in}^3$

When you learn math  
in an interesting way,  
you never forget.



**25 Million**

Math classes &  
counting

**100K+**

Students learning  
Math the right way

**20+ Countries**

Present across USA, UK,  
Singapore, India, UAE & more.

## Why choose Cuemath?

"Cuemath is a valuable addition to our family. We love solving puzzle cards. My daughter is now visualizing maths and solving problems effectively!"

- Gary Schwartz

"Cuemath is great because my son has a one-on-one interaction with the teacher. The instructor has developed his confidence and I can see progress in his work. One-on-one interaction is perfect and a great bonus."

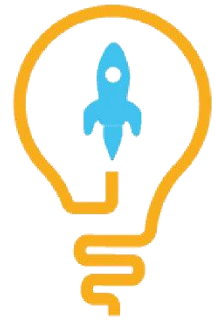
- Kirk Riley

"I appreciate the effort that miss Nitya puts in to help my daughter understand the best methods and to explain why she got a problem incorrect. She is extremely patient and generous with Miranda."

- Barbara Cabrera

Get the Cuemath advantage

**Book a FREE trial class**

**ANSWERS**

1)	$1.512 \text{ in}^3$ 2. $91.125 \text{ in}^3$
2)	$216 \text{ mm}^3$
3)	5 m
4)	27
5)	i) $96 \text{ cm}^3$ ii) $36 \text{ cm}^3$
6)	$6859 \text{ cm}^3$
7)	7
8)	$15.625 \text{ ft}^3$
9)	The given cube has higher volume.
10)	1--ii; 2--i; 3--iii

## FUN FACT

1. A cube features all right angles and a height, width and depth that are all equal.
2. 11 different 'nets' can be made by folding out the 6 square faces of a cube.
3. A square is in many ways like a cube, only in two dimensions rather than three.

