

Get better at Math.
Get better at
everything.



Come experience the Cuemath methodology and ensure your child stays ahead at math this summer.



**Adaptive
Platform**



**Interactive Visual
Simulations**



**Personalized
Attention**

For Grades 1 - 10



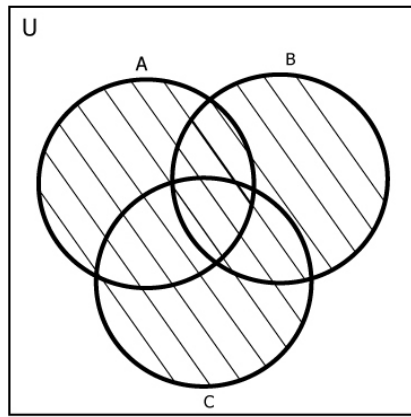
LIVE online classes
by trained and
certified experts.

Get the Cuemath advantage

Book a FREE trial class

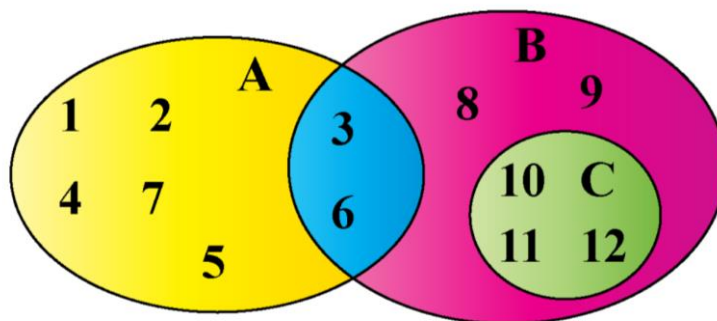
VENN DIAGRAM WORKSHEET II

1. Jason is wondering which among the following options will rightly represent the shaded region. Help him pick the right option.



- A. $A \cap B \cap C$
B. $A \cup B \cup C$

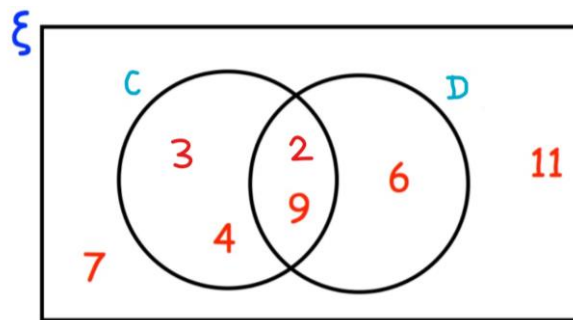
Study the following Venn diagram and state whether the following statements are true or false.



2. C is a subset of B.
3. The intersection of set A and B is a null set.
4. The intersection of set A and C is 3 and 6.
5. The complement of B includes elements 1, 2, 4, 5, and 7.
6. Jenna has been challenged to list the following? Could you help her match the same?
A = First 3 factors of 4,
B = First 5 multiples of 1

- i) $A \cup B = \{ \quad \}$
ii) $A \cap B = \{ \quad \}$

7. Here is a Venn diagram. Write down the numbers that are in set:

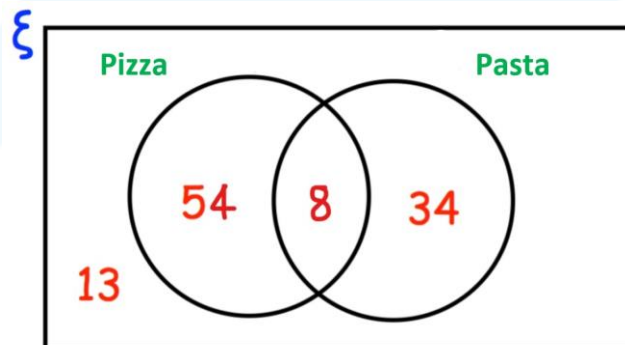


i) $C =$

ii) $C \cup D =$

iii) $C' =$

8. At a birthday party, the guests may have pizza or pasta with their dessert. The Venn diagram below represents the information regarding the same. Answer the questions that follow.



(a) How many guests had pizza?

(b) How many guests had neither pizza nor pasta?

(c) How many guests were at the birthday party?

When you learn math
in an interesting way,
you never forget.



25 Million

Math classes &
counting

100K+

Students learning
Math the right way

20+ Countries

Present across USA, UK,
Singapore, India, UAE & more.

Why choose Cuemath?

"Cuemath is a valuable addition to our family. We love solving puzzle cards. My daughter is now visualizing maths and solving problems effectively!"

- Gary Schwartz

"Cuemath is great because my son has a one-on-one interaction with the teacher. The instructor has developed his confidence and I can see progress in his work. One-on-one interaction is perfect and a great bonus."

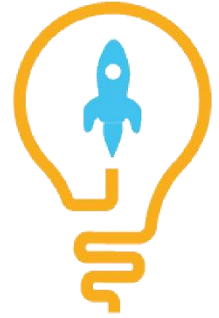
- Kirk Riley

"I appreciate the effort that miss Nitya puts in to help my daughter understand the best methods and to explain why she got a problem incorrect. She is extremely patient and generous with Miranda."

- Barbara Cabrera

Get the Cuemath advantage

Book a FREE trial class

**ANSWERS**

1.	B
2.	True
3.	False
4.	False
5.	True
6.	i) $A \cup B = \{1, 2, 3, 4, 5, 8, 12\}$ ii) $A \cap B = \{4\}$
7.	i) $C = \{2, 3, 4, 9\}$ ii) $C \cup D = \{2, 3, 4, 6, 9\}$ iii) $C' = \{6, 7, 11\}$
8.	(a) 54 (b) 13 (c) 109