

Get better at Math.
Get better at
everything.



Come experience the Cuemath methodology and ensure your child stays ahead at math this summer.



**Adaptive
Platform**



**Interactive Visual
Simulations**



**Personalized
Attention**

For Grades 1 - 10



LIVE online classes
by trained and
certified experts.

Get the Cuemath advantage

Book a FREE trial class

Worksheet on Variable Expressions - 4

Q1) The length of a hall is 9 inches less than 2 times the width of the hall. What is the length, if the width is w inches?

Q2) Match column 1 with the correct value of the variable expressions in column 2.

a) $5 - x$ at $x = 6$	i) 14
b) $-7x$ at $x = -2$	ii) -5
c) $\frac{5x}{7}$ at $x = -7$	iii) -1

Q3) If Nadia's present age is ' k ' years, then what would $(k + 2)$ years represent?

Q4) Read the following statement and give the appropriate expression.
' p is multiplied with -5 and the result is subtracted from 2'

Q5) A pen costs \$ x and a notebook costs \$ $2x$. Then, which one of the following statements is correct?

- a) The notebook costs 2 more than the cost of the pen.
- b) The cost of a pen is 2 times the cost of a notebook.
- c) The cost of a notebook is 2 times the cost of a pen.



Q6) Identify the operations used in the following expression and choose the option that tells how the expression has been formed.

$$7 - 5m$$

- a) m multiplied by 7 and 5 subtracted from the product.
- b) The product of 5 and m is subtracted from 7.
- c) The product of 5 and 7 is subtracted from m .
- d) m multiplied by 7 and 5 added to the product.

Q7) Write a variable expression for the sum of x , y and 4.

Q8) Which of the following is an expression containing numbers only?

- a) $9(x - 7)$
- b) $p + 8$
- c) $2 \times (5 + 8)$

Q9) Give variable expressions in the following cases.

- a) -7 times m to which 2 is added
- b) 5 subtracted from $2x$

Q10) If the side length of a square is ' s ' units. Write a variable expression describing the perimeter of the square.

When you learn math
in an interesting way,
you never forget.



25 Million

Math classes &
counting

100K+

Students learning
Math the right way

20+ Countries

Present across USA, UK,
Singapore, India, UAE & more.

Why choose Cuemath?

"Cuemath is a valuable addition to our family. We love solving puzzle cards. My daughter is now visualizing maths and solving problems effectively!"

- Gary Schwartz

"Cuemath is great because my son has a one-on-one interaction with the teacher. The instructor has developed his confidence and I can see progress in his work. One-on-one interaction is perfect and a great bonus."

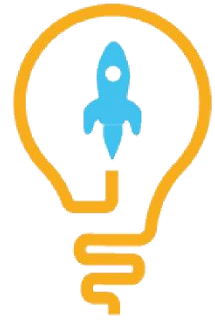
- Kirk Riley

"I appreciate the effort that miss Nitya puts in to help my daughter understand the best methods and to explain why she got a problem incorrect. She is extremely patient and generous with Miranda."

- Barbara Cabrera

Get the Cuemath advantage

Book a FREE trial class

**ANSWERS**

1)	$(2w - 9)$ inches
2)	a) - iii), b) - i), c) - ii)
3)	Nadia's age 2 years from now.
4)	$2 + 5p$
5)	c)
6)	b)
7)	$x + y + 4$
8)	c) $2 \times (5 + 8)$
9)	a) $-7m + 2$, b) $2x - 5$
10)	$4s$

FUN FACT

1. Given a variable and a constant, we can form an infinite number of expressions.
2. All numbers are a part of [expression](#).
3. We can add an infinite number of [constants](#) and [variables](#) to form an expression.

