

Get better at Math.
Get better at
everything.



Come experience the Cuemath methodology and ensure your child stays ahead at math this summer.



**Adaptive
Platform**



**Interactive Visual
Simulations**



**Personalized
Attention**

For Grades 1 - 10



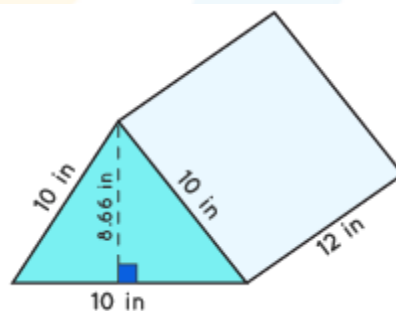
LIVE online classes
by trained and
certified experts.

Get the Cuemath advantage

Book a FREE trial class

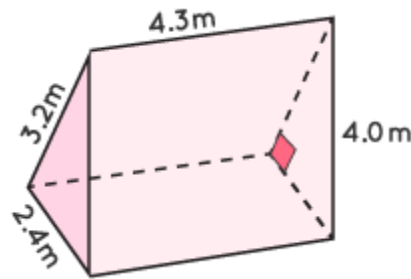
Surface Area of a Triangular Prism Worksheet III

- 1) Formula for the surface area of an equilateral triangular prism is _____.
- 2) The surface area of a right triangular prism is _____
 - a. $\sqrt{3}/4 \text{ side}^2 + 3 \times \text{side} \times \text{length of a prism}$.
 - b. $\text{Height} \times \text{side} + 3 \text{ side} \times \text{length of a prism}$.
 - c. Both a and b
 - d. None of these
- 3) How to write the formula for the surface area of an isosceles triangular prism?
- 4) Match the following:
 - a. The surface area of an equilateral triangular prism $p-(as + 3 sl)$
 - b. The surface area of a right triangular prism $q-(\sqrt{3}/4 \text{ side}^2 + 3sl)$
 - c. The surface area of an isosceles triangular prism $r-(ba + 3 sl)$
- 5) Determine the lateral surface area of a given right triangular prism.



- 6) An equilateral triangular prism's height is 24m. If the perimeter of the base of the prism is 7.5m. Find the surface area of the prism.
- 7) A triangular prism has an isosceles triangle as its base with sides 7 units, 7 units, and 10 units. If the length of the prism is 12 cm, find the lateral surface area.

8) Find the total surface area of the given triangular prism.



9) The surface area of an isosceles triangular prism is 720m^2 . The base of the isosceles triangle is 12 m , and the length of the prism is 24 m . Find the height of the isosceles triangle at the base of the prism if the value of the equal sides is 5m .

10) If the lateral area of an isosceles triangular prism is 432 sq. m . Find the total surface area of a prism if the perimeter of the isosceles triangles at the end of the prism is 18m and the base of the triangle is 8m .

**When you learn math
in an interesting way,
you never forget.**



25 Million

Math classes &
counting

100K+

Students learning
Math the right way

20+ Countries

Present across USA, UK,
Singapore, India, UAE & more.

Why choose Cuemath?

"Cuemath is a valuable addition to our family. We love solving puzzle cards. My daughter is now visualizing maths and solving problems effectively!"

- Gary Schwartz

"Cuemath is great because my son has a one-on-one interaction with the teacher. The instructor has developed his confidence and I can see progress in his work. One-on-one interaction is perfect and a great bonus."

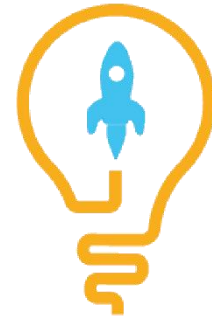
- Kirk Riley

"I appreciate the effort that miss Nitya puts in to help my daughter understand the best methods and to explain why she got a problem incorrect. She is extremely patient and generous with Miranda."

- Barbara Cabrera

Get the Cuemath advantage

Book a FREE trial class

ANSWERS

1. $\frac{\sqrt{3}}{4} \text{ side}^2 + 3 \times \text{side} \times \text{length}$ of a prism.	2. b. Height \times side + 3 side \times length of a prism.	3. $(bh) + (2la + lb)$	4. a- q b- p c- r	5. 446.6 sq. in
6. 207.71 sq. m	7. 337 sq. units	8. 48.96 m^2	9. h = 16m	10. 472 sq. m

FUN FACT

1. The surface area of a prism is the sum of the areas of all of its faces.
2. Triangular prisms have two (congruent) triangular bases and three rectangular sides.
3. The type of triangle the base of a triangular prism can tell you a lot about the sides of the prism:
 - a. If the base is an isosceles triangle, two of the rectangular faces will be congruent.
 - b. If the base is an equilateral triangle, all three of the rectangular faces will be congruent.

