

Get better at Math.
Get better at
everything.



Come experience the Cuemath methodology and ensure your child stays ahead at math this summer.



**Adaptive
Platform**



**Interactive Visual
Simulations**



**Personalized
Attention**

For Grades 1 - 10



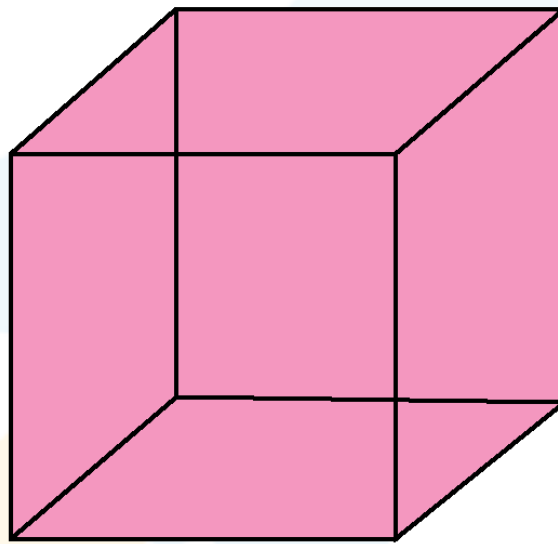
LIVE online classes
by trained and
certified experts.

Get the Cuemath advantage

Book a FREE trial class

SURFACE AREA OF A CUBE WORKSHEET I

- 1) The sum of areas of all the sides of an object is called _____. The formula of total surface area of a cube of is_____.
- 2) Calculate the total surface area of the cube whose edge is 50 cm.
- 3) How many identical square surfaces are there in a cube?



- 4) The total surface area of a cubical die is 150 in^2 . Find the length of each edge?



- 5) How much gift paper is required to at least fully cover a cubical box of edge length 50 in?



- 6) The edge of a cubical room is 120 in. The inner walls are to be painted (inclusive of windows and doors). Find the expenditure to be incurred at the rate of \$5 per square inch.



- 7) Calculate the lateral surface area of the cube whose edge is 16 ft.
- 8) Find the total surface area of a cubical box of edge length 1.6 in.
- 9) Roger has a Rubik's cube of side length 5 in.
Fill in the blanks:
Total surface area of Rubik's cube = _____.
Lateral surface area of Rubik's cube = _____.
- 10) What is the cost of painting a cubical box with dimensions of 5m at the rate of \$2 per square meter?

When you learn math
in an interesting way,
you never forget.



25 Million

Math classes &
counting

100K+

Students learning
Math the right way

20+ Countries

Present across USA, UK,
Singapore, India, UAE & more.

Why choose Cuemath?

"Cuemath is a valuable addition to our family. We love solving puzzle cards. My daughter is now visualizing maths and solving problems effectively!"

- Gary Schwartz

"Cuemath is great because my son has a one-on-one interaction with the teacher. The instructor has developed his confidence and I can see progress in his work. One-on-one interaction is perfect and a great bonus."

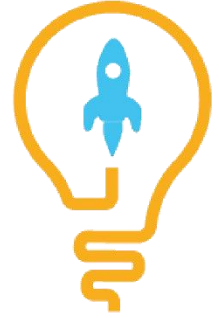
- Kirk Riley

"I appreciate the effort that miss Nitya puts in to help my daughter understand the best methods and to explain why she got a problem incorrect. She is extremely patient and generous with Miranda."

- Barbara Cabrera

Get the Cuemath advantage

Book a FREE trial class

**ANSWERS**

1)	Total surface area, $6a^2$
2)	15000 sq. cm
3)	6
4)	5 in
5)	1500 sq. in.
6)	\$288,000
7)	1024
8)	15.36 sq. in
9)	150, 100
10)	\$300

FUN FACT

1. The skin of an average adult covers an area of 2 square meters.
2. Human lungs contain about 500 million air pouches for exchange of oxygen. They create a surface area of around half the size of a tennis court.
3. Surface area is used in everyday life:
Painting/polishing a surface.
Gift wrap needed for a gift.
Dimensions of cardboard for making a box etc.

