

Get better at Math.
Get better at
everything.



Come experience the Cuemath methodology and ensure your child stays ahead at math this summer.



**Adaptive
Platform**



**Interactive Visual
Simulations**



**Personalized
Attention**

For Grades 1 - 10



LIVE online classes
by trained and
certified experts.

Get the Cuemath advantage

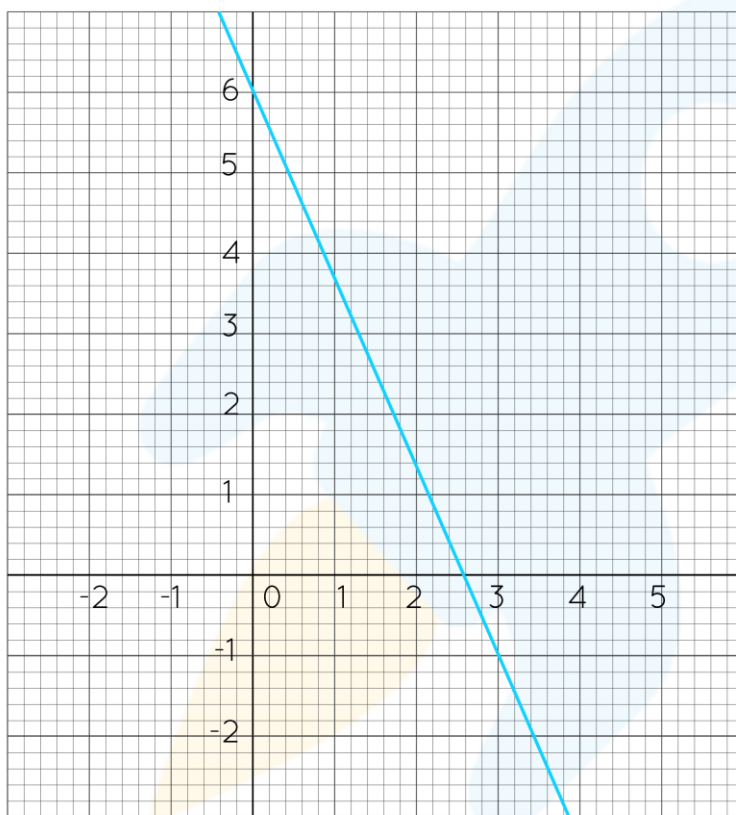
Book a FREE trial class

SLOPE-INTERCEPT FORM WORKSHEETS

For the questions from 1-3, write the slope and intercept of each line.

1. $y = -5x + 3$

2. $7x - 3y = 6$

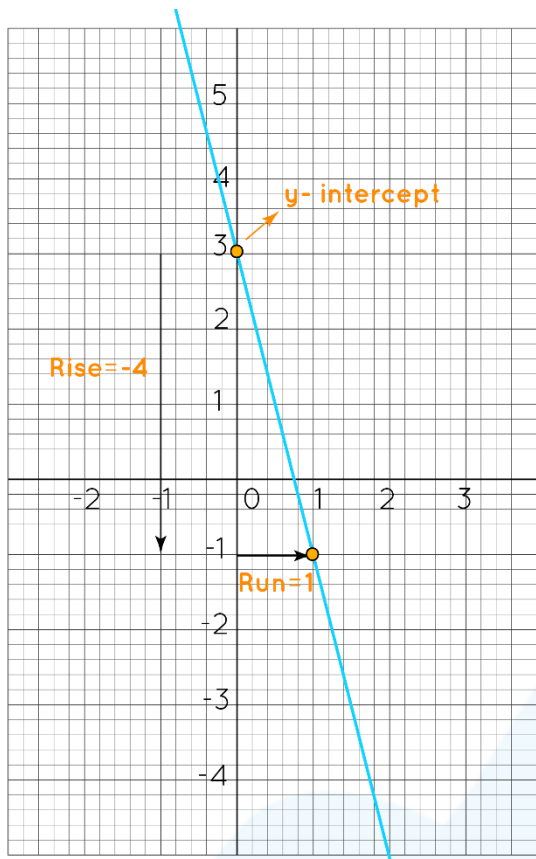


3.

For the questions from 4-6, write the equation of the line in the slope-intercept form using its slope and y-intercept.

4. Slope = $-\frac{1}{2}$; y-intercept = 5

5. Slope = -7; y-intercept = $\frac{5}{3}$



6.

7. Write the equation of the line that passes through the point $(3, -1)$ and whose slope is $-\frac{5}{3}$.

8. Draw the graphs of the following line by using the slope-intercept form.

$$y = \frac{1}{3}x + 4$$

9. Mia has a photo album with some photos in it. She starts adding 10 photos per week. After 10 weeks, she has 120 photos in her album. Write the linear equation in the slope-intercept form representing the relation between number of photos (p) and the number of weeks (w).



10. The slope-intercept form of a line is $y = 4$. What can you tell about this line?



**When you learn math
in an interesting way,
you never forget.**



25 Million

Math classes &
counting

100K+

Students learning
Math the right way

20+ Countries

Present across USA, UK,
Singapore, India, UAE & more.

Why choose Cuemath?

"Cuemath is a valuable addition to our family. We love solving puzzle cards. My daughter is now visualizing maths and solving problems effectively!"

- Gary Schwartz

"Cuemath is great because my son has a one-on-one interaction with the teacher. The instructor has developed his confidence and I can see progress in his work. One-on-one interaction is perfect and a great bonus."

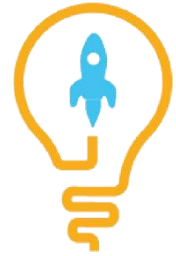
- Kirk Riley

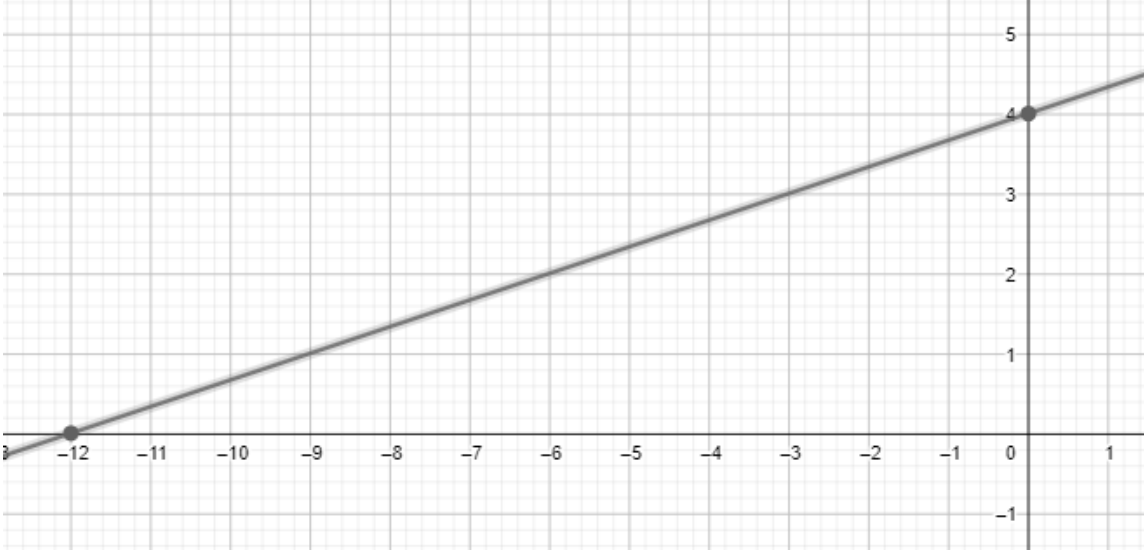
"I appreciate the effort that miss Nitya puts in to help my daughter understand the best methods and to explain why she got a problem incorrect. She is extremely patient and generous with Miranda."

- Barbara Cabrera

Get the Cuemath advantage

Book a FREE trial class


ANSWERS

1)	Slope = -5; y-intercept = 3
2)	Slope = $\frac{7}{3}$; y-intercept = $\frac{6}{7}$
3)	Slope = $-\frac{7}{3}$; y-intercept = 6
4)	$y = -\frac{1}{2}x + 5$
5)	$y = -7x + \frac{5}{3}$
6)	$y = -4x + 3$
7)	$y = -\frac{5}{3}x + 4$
8)	 <p><<You can graph $y = \frac{1}{3}x + 4$ in geogebra>></p>
9)	$p = 10w + 20$
10)	It is a horizontal line as its slope is 0.

FUN FACT

1. If the line is horizontal, its slope is 0.
2. If the line is vertical, its slope is undefined.
3. It is not possible to write the equation of a vertical line in the slope-intercept form.

