

Get better at Math.
Get better at
everything.



Come experience the Cuemath methodology and ensure your child stays ahead at math this summer.



**Adaptive
Platform**



**Interactive Visual
Simulations**



**Personalized
Attention**

For Grades 1 - 10



LIVE online classes
by trained and
certified experts.

Get the Cuemath advantage

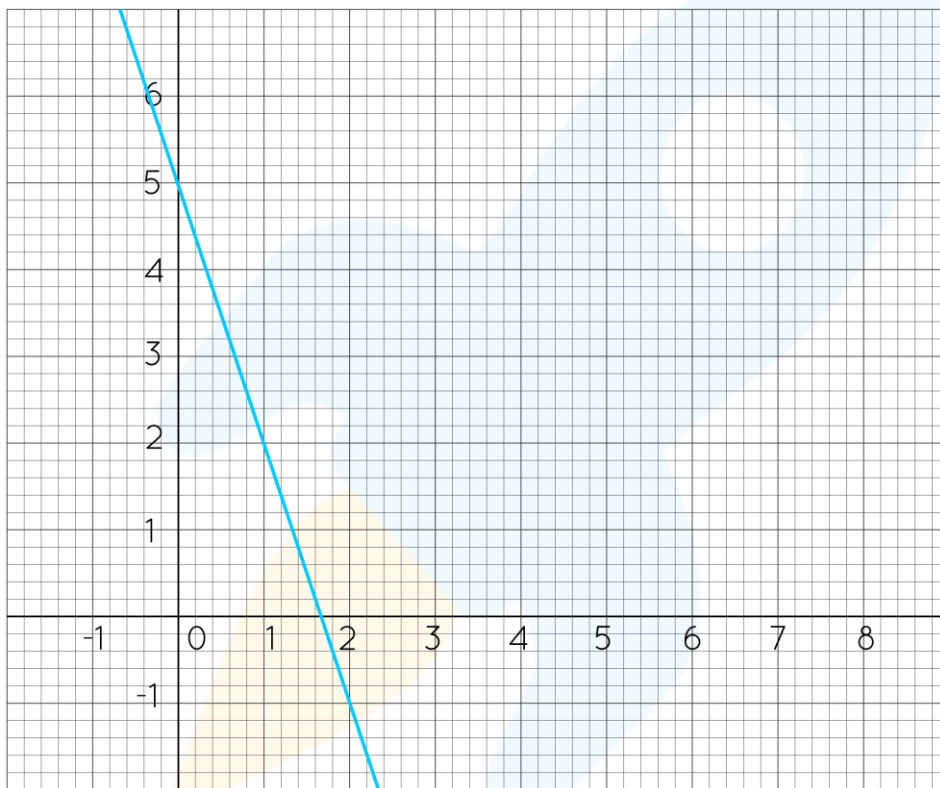
Book a FREE trial class

SLOPE-INTERCEPT FORM WORKSHEETS

For the questions from 1-3, write the slope and intercept of each line.

1. $y = -2x + 5$

2. $4x + 3y = -5$



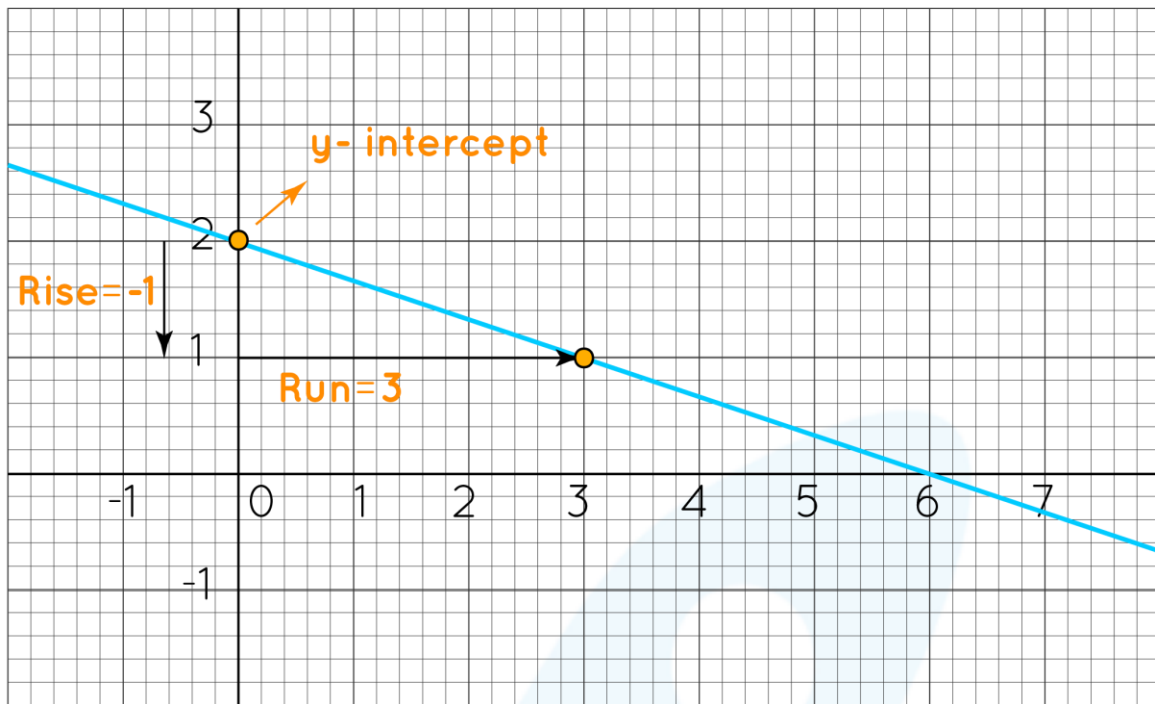
3.

For the questions from 4-6, write the equation of the line in the slope-intercept form using its slope and y-intercept.

4. Slope = $-\frac{3}{4}$; y-intercept = 2

5. Slope = -4; y-intercept = $\frac{1}{2}$

6.



7. Write the equation of the line that passes through the point $(3, -1)$ and whose slope is $\frac{-1}{2}$.
8. What is the equation of a horizontal line passing through $(3, -4)$?
9. What is the equation of a vertical line passing through $(3, -4)$? Is it possible to write it in the slope-intercept form?
10. The weights of the object on the moon and on the earth are in a linear relationship. Write the equation of the line representing this relationship if an object weighing 102 pounds on the earth would weigh 17 pounds on the moon.

Hint: An object weighing 0 pounds on the earth would obviously weigh 0 pounds on the moon too. Use this to find

the y-intercept of the line.



**When you learn math
in an interesting way,
you never forget.**



25 Million

Math classes &
counting

100K+

Students learning
Math the right way

20+ Countries

Present across USA, UK,
Singapore, India, UAE & more.

Why choose Cuemath?

"Cuemath is a valuable addition to our family. We love solving puzzle cards. My daughter is now visualizing maths and solving problems effectively!"

- Gary Schwartz

"Cuemath is great because my son has a one-on-one interaction with the teacher. The instructor has developed his confidence and I can see progress in his work. One-on-one interaction is perfect and a great bonus."

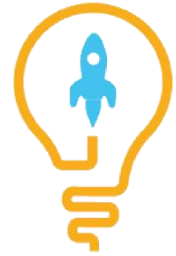
- Kirk Riley

"I appreciate the effort that miss Nitya puts in to help my daughter understand the best methods and to explain why she got a problem incorrect. She is extremely patient and generous with Miranda."

- Barbara Cabrera

Get the Cuemath advantage

Book a FREE trial class

**ANSWERS**

1)	Slope = -2; y-intercept = 5
2)	Slope = $-\frac{4}{3}$; y-intercept = $-\frac{5}{3}$
3)	Slope = -3; y-intercept = 5
4)	$y = -\frac{3}{4}x + 2$
5)	$y = -4x + \frac{1}{2}$
6)	$y = -\frac{1}{3}x + 2$
7)	$y = -\frac{1}{2}x + \frac{1}{2}$
8)	$y = -4$
9)	$x = 3$; No, we cannot write it in the slope-intercept form.
10)	$y = 4x$

FUN FACT

1. The slope intercept form of a line is $y = mx + b$, where m = the slope of the line and b = the y-intercept of the line.
2. The slope of the line is defined as $\frac{\text{Rise}}{\text{Run}}$, where the rise and run are defined as the vertical and horizontal distances between any two points on the line respectively. These two can be either positive or negative.
3. The y-intercept of the line is the point where the line intersects the y-axis.

