

Get better at Math.
Get better at
everything.



Come experience the Cuemath methodology and ensure your child stays ahead at math this summer.



**Adaptive
Platform**



**Interactive Visual
Simulations**



**Personalized
Attention**

For Grades 1 - 10



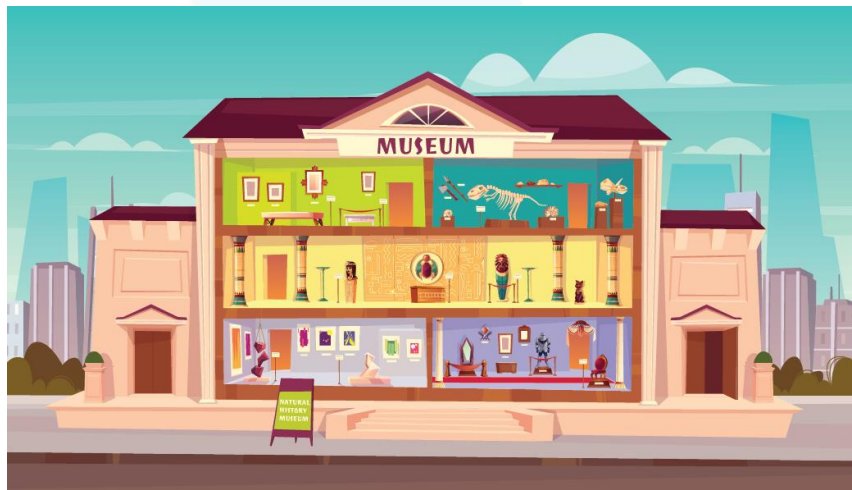
LIVE online classes
by trained and
certified experts.

Get the Cuemath advantage

Book a FREE trial class

Percentage Word Problem Worksheet-2

1. How much percentage of an hour is a minute?
2. If Jane has \$70 out of which she spent \$30 on stationery items, \$20 on buying chocolates and the rest in donation for flood victims. Find the percentage of money given by Jane for donation?
3. There are 1800 students in a school, out of which 950 are girls and the rest are boys. If 40% of the girls and 30% of the boys come to school by public transport, find the number of students who come to school through other modes of transportation?
4. If a museum is 40 miles away from the school, and the first stop is after 12 miles, second stop is after 26 miles from the starting point, then find the percentage of distance left to be covered after second stop?



5. In a fruit basket if there are 2 dozen bananas out of which 5 are rotten, find the percentage of bananas which are in good condition?



6. Sam and Juliet were arguing over a percentage fact. Sam said that 12 % of 34 is same as 34% of 12, while Juliet said that “No, they are different”. Can you identify who is correct, Sam or Juliet?



7. If in a container, there was 8 liters of oil initially and then 6 liters of oil was further added to it. Find the percentage change of the quantity of oil in the container?
8. If morning sales of a coffee shop is 20% more than its evening sales which is \$5500 on a particular day. Find the amount earned by the shop owner from both morning and evening sales on that day?

9. In a football tournament, if team A has scored 30% more points than team B and the total points scored by both the teams is 240, find the points scored by team A?



10. Emma had 200 marbles out of which she gave 40 to Jacob. Find the percentage of marbles left with Emma now?

When you learn math
in an interesting way,
you never forget.



25 Million

Math classes &
counting

100K+

Students learning
Math the right way

20+ Countries

Present across USA, UK,
Singapore, India, UAE & more.

Why choose Cuemath?

"Cuemath is a valuable addition to our family. We love solving puzzle cards. My daughter is now visualizing maths and solving problems effectively!"

- Gary Schwartz

"Cuemath is great because my son has a one-on-one interaction with the teacher. The instructor has developed his confidence and I can see progress in his work. One-on-one interaction is perfect and a great bonus."

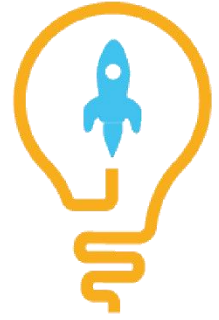
- Kirk Riley

"I appreciate the effort that miss Nitya puts in to help my daughter understand the best methods and to explain why she got a problem incorrect. She is extremely patient and generous with Miranda."

- Barbara Cabrera

Get the Cuemath advantage

Book a FREE trial class

**ANSWERS**

1)	1.66%
2)	28.57%
3)	1165 students
4)	35%
5)	79.16%
6)	Sam is correct
7)	75%
8)	\$ 12100
9)	135.64
10)	80

FUN FACT

1. Do you know 10-11% of people in the world are left-handed?
2. Percentage is another way of expressing ratio or fraction.
3. In numbers, 100% is equal to 1.

