

Get better at Math.
Get better at
everything.



Come experience the Cuemath methodology and ensure your child stays ahead at math this summer.



**Adaptive
Platform**



**Interactive Visual
Simulations**



**Personalized
Attention**

For Grades 1 - 10



LIVE online classes
by trained and
certified experts.

Get the Cuemath advantage

Book a FREE trial class

PERCENT TO DECIMAL WORKSHEET-III

- 1) Match the decimals in column 1 with their equivalent percentages in column 2.

Decimal	Percentage
a) 0.9	i) 90%
b) 9	ii) 9%
c) 0.09	iii) 900%

- 2) Which percentage from the following list represents the decimal 1.4?

140%

14%

1.4%

0.14%

- 3) Express the following percentages as decimals.

a) 34%

b) 5%

- 4) Which of the following decimals is equal to 8%?

a) 80.0

b) 8.0

c) 0.8

d) 0.08

- 5) Fill in the blanks:

To change a percentage to a decimal you _____ by 100.

6) While performing a lab experiment Jenny adds 15% acid concentrate to prepare 1 l solution. Find the quantity of acid concentrate in the solution.



7) There are 64% chances of Jack's team winning the Cricket match. Find the probability that they will lose.



8) Find the missing number:

$$\frac{20}{100} + \frac{40}{?} = 0.6$$

9) Nora bought a dress priced at \$100. Calculate the discount amount if she was offered a discount of 4.5%.



10) State whether true or false:
The decimal equivalent of 24% is 2.4.

When you learn math
in an interesting way,
you never forget.



25 Million

Math classes &
counting

100K+

Students learning
Math the right way

20+ Countries

Present across USA, UK,
Singapore, India, UAE & more.

Why choose Cuemath?

"Cuemath is a valuable addition to our family. We love solving puzzle cards. My daughter is now visualizing maths and solving problems effectively!"

- Gary Schwartz

"Cuemath is great because my son has a one-on-one interaction with the teacher. The instructor has developed his confidence and I can see progress in his work. One-on-one interaction is perfect and a great bonus."

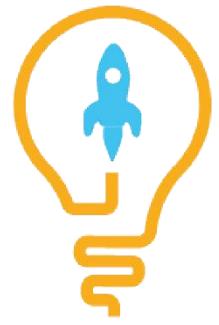
- Kirk Riley

"I appreciate the effort that miss Nitya puts in to help my daughter understand the best methods and to explain why she got a problem incorrect. She is extremely patient and generous with Miranda."

- Barbara Cabrera

Get the Cuemath advantage

Book a FREE trial class

**ANSWERS**

1)	a)--i); b)--iii); c)--ii)
2)	140 %
3)	a)0.34 b)0.05
4)	d)
5)	divide
6)	0.15 l
7)	0.36
8)	100
9)	\$4.5
10)	False

FUN FACT

1. All decimal numbers can also be converted to a percentage by multiplication by 100.
2. We can represent [decimal](#) numbers using Base-10 blocks (flats, rods, and blocks). A flat represents one whole unit, a rod one-tenth of the whole, and a block one-hundredth of the whole.
3. All decimal numbers can be converted to a [fraction](#).

