

Get better at Math.
Get better at
everything.



Come experience the Cuemath methodology and ensure your child stays ahead at math this summer.



**Adaptive
Platform**



**Interactive Visual
Simulations**



**Personalized
Attention**

For Grades 1 - 10



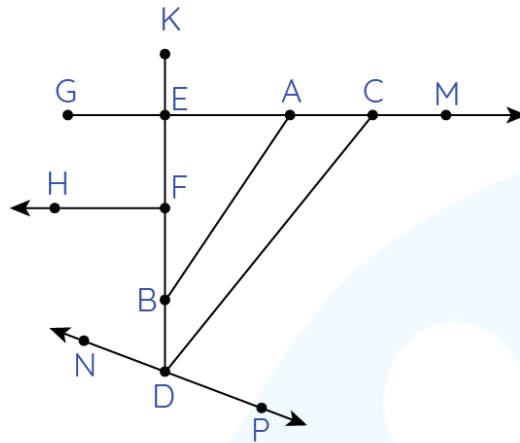
LIVE online classes
by trained and
certified experts.

Get the Cuemath advantage

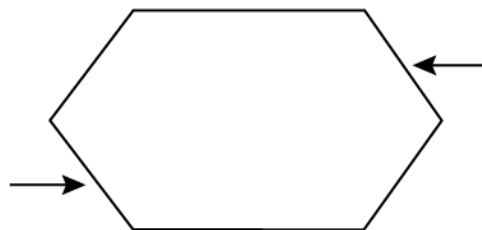
Book a FREE trial class

PARALLEL PERPENDICULAR AND INTERSECTING LINES WORKSHEET IV

Answer the following questions (1-5) based on the image shown below.

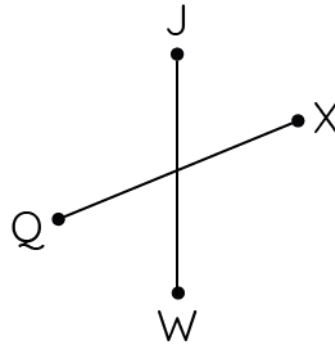


- 1) Lines CD and NP are _____ lines.
- 2) Are line NP and line AB perpendicular to each other?
- 3) Name any two pairs of intersecting lines.
- 4) Lines HF and CD are perpendicular lines.
a) True b) False
- 5) How many lines are perpendicular to CD?
- 6) State the relation between the highlighted lines shown below:

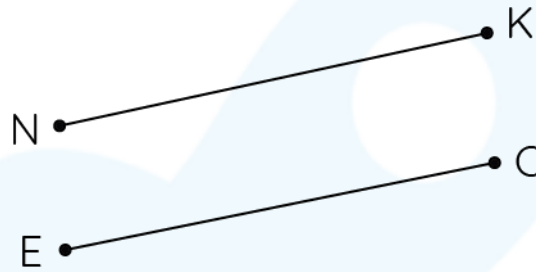


Identify each pair of lines as parallel, perpendicular or intersecting lines in the question 7, 8, and 9 given below.

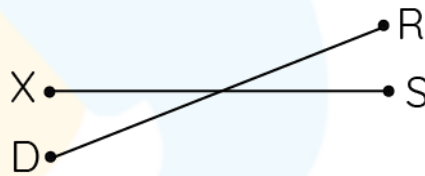
7)



8)



9)



10) A line n passes through the points $(6, -4)$ and $(2, 3)$, and another line which has an equation, $Y = 0$, are _____ to each other.

**When you learn math
in an interesting way,
you never forget.**



25 Million

Math classes &
counting

100K+

Students learning
Math the right way

20+ Countries

Present across USA, UK,
Singapore, India, UAE & more.

Why choose Cuemath?

"Cuemath is a valuable addition to our family. We love solving puzzle cards. My daughter is now visualizing maths and solving problems effectively!"

- Gary Schwartz

"Cuemath is great because my son has a one-on-one interaction with the teacher. The instructor has developed his confidence and I can see progress in his work. One-on-one interaction is perfect and a great bonus."

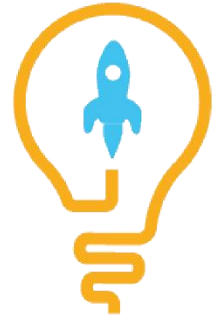
- Kirk Riley

"I appreciate the effort that miss Nitya puts in to help my daughter understand the best methods and to explain why she got a problem incorrect. She is extremely patient and generous with Miranda."

- Barbara Cabrera

Get the Cuemath advantage

Book a FREE trial class



ANSWERS

1)	Intersecting
2)	No, Intersecting lines
3)	HF and AB, CD and GM
4)	b
5)	0
6)	Parallel
7)	Intersecting
8)	Parallel
9)	Intersecting
10)	Intersecting