

Get better at Math.
Get better at
everything.



Come experience the Cuemath methodology and ensure your child stays ahead at math this summer.



**Adaptive
Platform**



**Interactive Visual
Simulations**



**Personalized
Attention**

For Grades 1 - 10



LIVE online classes
by trained and
certified experts.

Get the Cuemath advantage

Book a FREE trial class

Multiplying Mixed Numbers by Whole Numbers Worksheet-2

- 1) Siana runs $2\frac{1}{7}$ km in one hour. How much distance will she cover in 8 hours?
- 2) Ron drinks $1\frac{3}{5}$ L of juice each day. Calculate the amount of juice he drinks in 20 days.
- 3) Evaluate the following:

$$11\frac{1}{3} \times 27$$

- 4) Solve:

$$3\frac{57}{67} \times 67$$

- 5) Kim spends $1\frac{1}{6}$ hours of time on watching TV each day. Calculate the total number of hours she spends on watching TV in the month of September.



- 6) Solve: $9\frac{3}{4} \times 36$

7) Simplify:

$$9 \times 5 \frac{24}{27}$$

8) Simplify: $12 \frac{13}{15} \times 75$

9) Evaluate:

$$20 \times 2 \frac{4}{5}$$

10) Find the perimeter of a square park which has a side length of $8 \frac{1}{2}$ units.



**When you learn math
in an interesting way,
you never forget.**



25 Million

Math classes &
counting

100K+

Students learning
Math the right way

20+ Countries

Present across USA, UK,
Singapore, India, UAE & more.

Why choose Cuemath?

"Cuemath is a valuable addition to our family. We love solving puzzle cards. My daughter is now visualizing maths and solving problems effectively!"

- Gary Schwartz

"Cuemath is great because my son has a one-on-one interaction with the teacher. The instructor has developed his confidence and I can see progress in his work. One-on-one interaction is perfect and a great bonus."

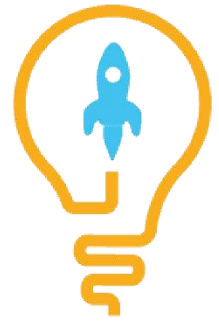
- Kirk Riley

"I appreciate the effort that miss Nitya puts in to help my daughter understand the best methods and to explain why she got a problem incorrect. She is extremely patient and generous with Miranda."

- Barbara Cabrera

Get the Cuemath advantage

Book a FREE trial class

**ANSWERS**

1)	$17\frac{1}{7}$ km
2)	32 L
3)	306
4)	258
5)	35 hours
6)	351
7)	53
8)	965
9)	56
10)	34 units

FUN FACT

- 1) Did you look into an interesting relationship between equivalent fractions? The product of the numerator of the first [fraction](#) and the denominator of the second fraction is equal to the product of the denominator of the first fraction and the numerator of the second fraction.
- 2) When the parts of the whole are unevenly divided, they don't form fractions.
- 3) Did you know the word fraction comes from the Latin word "fractio" which means to break?

