

Get better at Math.
Get better at
everything.



Come experience the Cuemath methodology and ensure your child stays ahead at math this summer.



Adaptive Platform



Interactive Visual Simulations



Personalized Attention

For Grades 1 - 10



LIVE online classes
by trained and
certified experts.

Get the Cuemath advantage

Book a FREE trial class

Multi Step Inequalities Worksheets

Solve each inequality in questions 1-5

1) $5x - 7 \geq 8$

2) $11 + 3x \leq 17$

3) $x/4 + 1 > 10$

4) $3x + 1 \geq 7$

5) $-8x + 18 > -22$

6) Adrian works in New York City and makes \$42 per hour. She works in an office and must get her suit dry cleaned every day for \$75. If she wants to make more than \$260 a day, at least how many hours must she work?

7) The sum of two consecutive even integers is at most 400. Find the pair of integers with the greatest sum.

8) Ryan is a wrestler trying to make weight. He currently weighs 200 lbs. If he cuts 2 lbs. per week, how many weeks will it take him to weigh less than 175 lbs.?

9) The length of a rectangle is 5 cm less than twice its width. If the perimeter of the rectangle is no more than 70cm, what are the maximum possible dimensions?



- 10) Pet Supplies makes a profit of \$5.50 per bag on its line of natural dog food. If the store wants to make a profit of no less than \$5225, how many bags of dog food does it



**When you learn math
in an interesting way,
you never forget.**



25 Million

Math classes &
counting

100K+

Students learning
Math the right way

20+ Countries

Present across USA, UK,
Singapore, India, UAE & more.

Why choose Cuemath?

"Cuemath is a valuable addition to our family. We love solving puzzle cards. My daughter is now visualizing maths and solving problems effectively!"

- Gary Schwartz

"Cuemath is great because my son has a one-on-one interaction with the teacher. The instructor has developed his confidence and I can see progress in his work. One-on-one interaction is perfect and a great bonus."

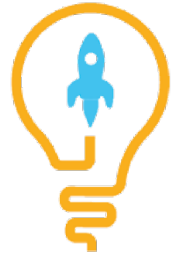
- Kirk Riley

"I appreciate the effort that miss Nitya puts in to help my daughter understand the best methods and to explain why she got a problem incorrect. She is extremely patient and generous with Miranda."

- Barbara Cabrera

Get the Cuemath advantage

Book a FREE trial class

ANSWERS

1)	$x \geq 3$
2)	$x \geq 2$
3)	$x > 36$
4)	$x \geq 2$
5)	$x < 5$
6)	At least 8 hours per day
7)	198, 200
8)	More than 12.5 weeks
9)	$W = 15$ $L = 25$
10)	At least 950 bags of dog food

FUN FACT

- We must add or subtract the same quantity on both sides of an inequality.
- We must multiply or divide the same quantity on both sides of an inequality.
- When we plot an inequality on a number line, we use a line.

