

Get better at Math.
Get better at
everything.



Come experience the Cuemath methodology and ensure your child stays ahead at math this summer.



**Adaptive
Platform**



**Interactive Visual
Simulations**



**Personalized
Attention**

For Grades 1 - 10



LIVE online classes
by trained and
certified experts.

Get the Cuemath advantage

Book a FREE trial class

MULTI DIGIT ADDITION WORKSHEET-IV

1) Add.

$$\begin{array}{r} 6023 \\ 826 \\ 1252 \\ + 9304 \\ \hline \\ \hline \end{array}$$

2) Find the missing term:

$$? + 990 = 8,999$$

3) Which of the following given below are equal.

a) $1250 + 1120$

b) $1240 + 1140$

c) $1200 + 1150$

d) $1260 + 1110$

4) 918 people visited the zoo on Monday, 760 on Tuesday and 1190 on Wednesday. How many people visited the zoo on these 3 days?



5) From which number should 989 be subtracted from to get 11780?

6) Find the missing numbers.

$$\begin{array}{r}
 3 \quad \square \quad 4 \quad 6 \\
 + \quad 7 \quad 6 \quad \square \quad 6 \\
 \hline
 \square \quad 1 \quad 2 \quad 0 \quad 2 \\
 \hline
 \end{array}$$

7) Find the sum of 11409 to 829 and write your answer in the given box.

8) The value of $1159 + 641$ is:

- a) 1800
- b) 1900
- c) 1100
- d) 1950

Refer to the given information to answer Q9 and Q10.

The number of Facebook, WhatsApp, and, Instagram users of a city in a particular year are given:

Facebook	WhatsApp	Instagram
947	10312	8213

9) Calculate the total number of users who use Facebook and WhatsApp.

10) What is the sum of the number of users of all three applications?

**When you learn math
in an interesting way,
you never forget.**



25 Million

Math classes &
counting

100K+

Students learning
Math the right way

20+ Countries

Present across USA, UK,
Singapore, India, UAE & more.

Why choose Cuemath?

"Cuemath is a valuable addition to our family. We love solving puzzle cards. My daughter is now visualizing maths and solving problems effectively!"

- Gary Schwartz

"Cuemath is great because my son has a one-on-one interaction with the teacher. The instructor has developed his confidence and I can see progress in his work. One-on-one interaction is perfect and a great bonus."

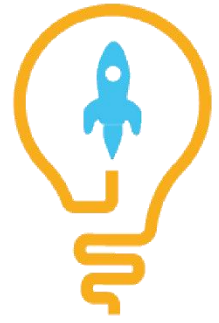
- Kirk Riley

"I appreciate the effort that miss Nitya puts in to help my daughter understand the best methods and to explain why she got a problem incorrect. She is extremely patient and generous with Miranda."

- Barbara Cabrera

Get the Cuemath advantage

Book a FREE trial class



ANSWERS

1)	17405
2)	9989
3)	a), d)
4)	2868 people
5)	12769
6)	$ \begin{array}{r} 1 \quad 1 \quad 1 \quad 1 \\ 3 \quad 5 \quad 4 \quad 6 \\ + 7 \quad 6 \quad 5 \quad 6 \\ \hline 1 \quad 1 \quad 2 \quad 0 \quad 2 \end{array} $
7)	12238
8)	a)
9)	11259 people
10)	19472 people

FUN FACT

1. The terms such as "altogether", "sum", "total", "increase" and "add on" mean that you need to add one number to the other.
2. Adding zero to any [number](#) gives the number itself. For example, $1400 + 0 = 1400$.
3. Do you know [multiplication](#) is also repeated [addition](#)?

