

Get better at Math.
Get better at
everything.



Come experience the Cuemath methodology and ensure your child stays ahead at math this summer.



**Adaptive
Platform**



**Interactive Visual
Simulations**



**Personalized
Attention**

For Grades 1 - 10



LIVE online classes
by trained and
certified experts.

Get the Cuemath advantage

Book a FREE trial class

Measurement Conversion Worksheet 4

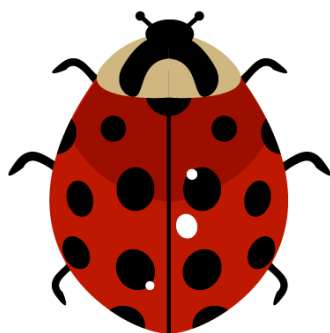
- Starbucks sold 221 cups of coffee in a day. Find out the quantity of coffee in ounces that they sold.
- Fill in the blank with the appropriate conversion:

888 cups = ____ pints

- Match the following conversions:

Column I	Column II
i) 450 pints	a) 175 quarts
ii) 350 pints	b) 154 pints
iii) 77 quart	c) 900 cups

- Paul drank 72 cups of coffee in two months. Find out how many quarts of the coffee he drank in total?
- The average height of the tree in the Amazon forest is about 80 feet. Find out the average height in inches.
- An insect travels 12 inches of a distance in one day. How much distance will it travel in 1 week?
a) 84 feet b) 7 feet c) 6 feet d) 24 feet



7. 14 feet is _____ than 5 yards 5 feet.

- a) greater
- b) smaller

8. 50 ounces of sugar is equal to how many teaspoons of sugar?



9. $12\text{kg} = \text{_____ g}$

10. Jack's weight is 7 kg 800 g more than Lauren's weight. If Lauren's

weight is 57 kg 200 g, what is Jack's weight?



When you learn math
in an interesting way,
you never forget.



25 Million

Math classes &
counting

100K+

Students learning
Math the right way

20+ Countries

Present across USA, UK,
Singapore, India, UAE & more.

Why choose Cuemath?

"Cuemath is a valuable addition to our family. We love solving puzzle cards. My daughter is now visualizing maths and solving problems effectively!"

- Gary Schwartz

"Cuemath is great because my son has a one-on-one interaction with the teacher. The instructor has developed his confidence and I can see progress in his work. One-on-one interaction is perfect and a great bonus."

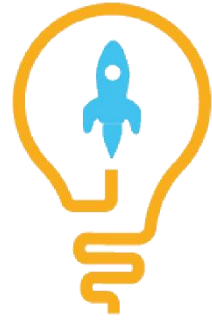
- Kirk Riley

"I appreciate the effort that miss Nitya puts in to help my daughter understand the best methods and to explain why she got a problem incorrect. She is extremely patient and generous with Miranda."

- Barbara Cabrera

Get the Cuemath advantage

Book a FREE trial class

**ANSWERS**

1)	1768
2)	i) 444 ii) 900
3)	i) c ii) a iii) b
4)	18 quarts
5)	i) 12 ii) 960
6)	b)
7)	b)
8)	300 teaspoons
9)	12000 g
10)	65kg

FUN FACT

1. There are units greater than kilo as well. These have prefix mega, Giga and Tera.
2. We can remember "Kilo, Hecto, Deca, Deci, Centi, and Milli" by just remembering and using the mnemonic "King Henry Died of Drinking Cold Milk".
3. The Metric system is based on the number 10.

