

Get better at Math.
Get better at
everything.



Come experience the Cuemath methodology and ensure your child stays ahead at math this summer.



Adaptive Platform



Interactive Visual Simulations



Personalized Attention

For Grades 1 - 10



LIVE online classes
by trained and
certified experts.

Get the Cuemath advantage

Book a FREE trial class

Math Expression Grade 4 Worksheets

Q1) The length of a hall is 9 inches less than 2 times the width of the hall. What is the length, if the width is w inches?

Q2) Match column 1 with the correct value of the expressions in column 2.

a) $5 + x$ at $x = 6$	i) 14
b) $-7x$ at $x = -2$	ii) -5
c) $\frac{5x}{7}$ at $x = -7$	iii) 11

Q3) If Nadia's present age is ' k ' years, then what would $(k + 2)$ years represent?

Q4) Read the following statement and give the appropriate expression.
' p is multiplied with -5 and the result is subtracted from 2'

Q5) A pen costs \$ x and a notebook costs \$ $2x$. Then, which one of the following statements is correct?

- a) The notebook costs 2 more than the cost of the pen.
- b) The cost of a pen is 2 times the cost of a notebook.
- c) The cost of a notebook is 2 times the cost of a pen.



Q6) Identify the operations used in the following expression and choose the option that tells how the expression has been formed.

$$7 - 5m$$

- a) m multiplied by 7 and 5 subtracted from the product.
- b) The product of 5 and m is subtracted from 7.
- c) The product of 5 and 7 is subtracted from m .
- d) m multiplied by 7 and 5 added to the product.

Q7) Write an expression for the sum of x , y and 4.

Q8) Which of the following is an expression containing numbers only?

- a) $9(x - 7)$
- b) $p + 8$
- c) $2 \times (5 + 8)$

Q9) Give expressions in the following cases.

- a) -7 times m to which 2 is added
- b) 5 subtracted from $4x$

Q10) If the side length of a square is ' s ' units. Write an expression describing the perimeter of the square.

**When you learn math
in an interesting way,
you never forget.**



25 Million

Math classes &
counting

100K+

Students learning
Math the right way

20+ Countries

Present across USA, UK,
Singapore, India, UAE & more.

Why choose Cuemath?

"Cuemath is a valuable addition to our family. We love solving puzzle cards. My daughter is now visualizing maths and solving problems effectively!"

- Gary Schwartz

"Cuemath is great because my son has a one-on-one interaction with the teacher. The instructor has developed his confidence and I can see progress in his work. One-on-one interaction is perfect and a great bonus."

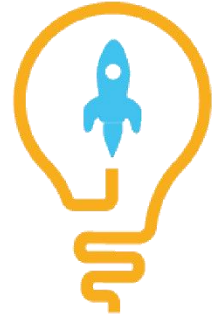
- Kirk Riley

"I appreciate the effort that miss Nitya puts in to help my daughter understand the best methods and to explain why she got a problem incorrect. She is extremely patient and generous with Miranda."

- Barbara Cabrera

Get the Cuemath advantage

Book a FREE trial class

**ANSWERS**

1)	$(2w - 9)$ inches
2)	a) - iii), b) - i), c) - ii)
3)	Nadia's age 2 years from now.
4)	$2 + 5p$
5)	c)
6)	b)
7)	$x + y + 4$
8)	c) $2 \times (5 + 8)$
9)	a) $-7m + 2$, b) $4x - 5$
10)	$4s$

FUN FACT

1. Given a variable and a constant, we can form an infinite number of expressions.
2. All numbers are a part of expression.
3. We can add an infinite number of constants and variables to form an expression.

