

Get better at Math.  
Get better at  
everything.



Come experience the Cuemath methodology and ensure your child stays ahead at math this summer.



**Adaptive  
Platform**



**Interactive Visual  
Simulations**



**Personalized  
Attention**

For Grades 1 - 10



LIVE online classes  
by trained and  
certified experts.

Get the Cuemath advantage

**Book a FREE trial class**

## 5th Grade Long Division Worksheets

Q.1 Find the quotient using long division:  $62,700 \div 30$

Q.2 A chocolate packing machine packs 40 chocolates in a pack. If in a day, the machine packed 10 packs. Find out the total number of days it took the machine to pack 2861600 chocolates.

Q.3 In a flower bed, 74 flowers can be accommodated in 2 rows. If there are 21876 flowers. Then can you find out how many flowers will be in the last row which is not full?

Q.4 Candice was ordering pizzas for the party. If there are 2744 people at the party and 30 people can eat from 15 pizzas. Then how many pizzas shall she buy?



Q.5 Students in the school collected \$38675 for the upcoming fest. If each student chipped \$91. Find out the total number of students in a class if there are 25 such classes in the school.

Q.6 State whether true or false:  $4572 \div 12 = 386$

Q.7 Solve:

$$13 \overline{) 35744}$$

Q.8 Fill in the blanks:

$$\begin{array}{r}
 \square 1 \square \\
 \hline
 52 \overline{) 16,422} \\
 \underline{-15} \phantom{0} \\
 82 \\
 \underline{-\square 2} \\
 302 \\
 \underline{-2\square 0} \\
 \square 8
 \end{array}$$

Q.9 Find the greatest 4 digit number divisible by 21.

Q.10 Calculate the remainder after long division and verify your answer.

$$11062 \div 18$$

**When you learn math  
in an interesting way,  
you never forget.**



**25 Million**

Math classes &  
counting

**100K+**

Students learning  
Math the right way

**20+ Countries**

Present across USA, UK,  
Singapore, India, UAE & more.

## Why choose Cuemath?

"Cuemath is a valuable addition to our family. We love solving puzzle cards. My daughter is now visualizing maths and solving problems effectively!"

- Gary Schwartz

"Cuemath is great because my son has a one-on-one interaction with the teacher. The instructor has developed his confidence and I can see progress in his work. One-on-one interaction is perfect and a great bonus."

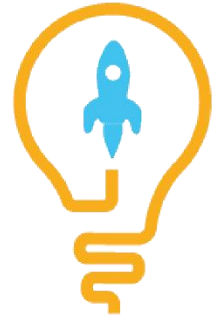
- Kirk Riley

"I appreciate the effort that miss Nitya puts in to help my daughter understand the best methods and to explain why she got a problem incorrect. She is extremely patient and generous with Miranda."

- Barbara Cabrera

Get the Cuemath advantage

**Book a FREE trial class**

**ANSWERS**

1)	290
2)	7154 drugs
3)	9 flowers
4)	1374 Pizzas
5)	17 Students
6)	False
7)	Quotient = 2749, Remainder= 7
8)	3,5,6,5,6,3
9)	9996
10)	10

**FUN FACT**

1. Many symbols are used to denote division in an expression. The oblique bar was introduced by De Morgan in 1845.
2. Many algorithms have existed since the 13th century to solve long division, the one most prominent being introduced by Henry Briggs.
3. The horizontal bar of fraction, used to denote division operation was introduced by Arabs.

