

**Get better at Math.
Get better at
everything.**



Come experience the Cuemath methodology and ensure your child stays ahead at math this summer.



**Adaptive
Platform**



**Interactive Visual
Simulations**



**Personalized
Attention**

For Grades 1 - 10



LIVE online classes
by trained and
certified experts.

Get the Cuemath advantage

Book a FREE trial class

5th Grade Long Division Worksheets

Q.1 Find the quotient using long division: $2,444 \div 52$

Q.2 The shopkeeper puts 16 cartons in one stack. He has 1346 cartons. Find out the total number of stacks he will have in the end and the number of new cartons needed to complete the final stack.

Q.3 99902 flowers are to be put in flower pots. 29 flowers can be kept in the flower pot. How many flower pots are required if 345 plants were found dead, and could not be used?

Q.4 There are 14720 students in a school. How many classes does the school have if each class has 32 students?



Q.5 Yasmin was reading a book that has 12798 pages. If she can read 81 pages in a day. Then how many weeks will it take her to complete the book?

Q.6 Solve:

$$\begin{array}{r} 23 \overline{) 19386} \end{array}$$

Q.7 State whether true or false: $16424 \div 23 = 714$

Q.8 Fill in the blanks:

$$\begin{array}{r}
 1 \square 1 \square \\
 \hline
 13 \overline{) 23576} \\
 \underline{- 13} \\
 10 \square \\
 \underline{- 104} \\
 17 \\
 \underline{- 1 \square} \\
 \square 6 \\
 \underline{39} \\
 \square
 \end{array}$$

Q.9 Find the greatest 3 digit number divisible by 13.

Q.10 Calculate the remainder after long division and verify your answer.

$$29546 \div 23$$

**When you learn math
in an interesting way,
you never forget.**



25 Million

Math classes &
counting

100K+

Students learning
Math the right way

20+ Countries

Present across USA, UK,
Singapore, India, UAE & more.

Why choose Cuemath?

"Cuemath is a valuable addition to our family. We love solving puzzle cards. My daughter is now visualizing maths and solving problems effectively!"

- Gary Schwartz

"Cuemath is great because my son has a one-on-one interaction with the teacher. The instructor has developed his confidence and I can see progress in his work. One-on-one interaction is perfect and a great bonus."

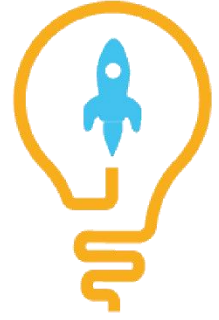
- Kirk Riley

"I appreciate the effort that miss Nitya puts in to help my daughter understand the best methods and to explain why she got a problem incorrect. She is extremely patient and generous with Miranda."

- Barbara Cabrera

Get the Cuemath advantage

Book a FREE trial class

**ANSWERS**

1)	47
2)	2,14
3)	3433 flower pots
4)	460 classes
5)	158 days
6)	Quotient = 842 , Remainder $r=20$
7)	False
8)	8,3,5,3,4,7
9)	988
10)	14

FUN FACT

1. The modern algorithm adopted to solve long division was introduced by Henry Briggs c. 1600 A.D.
2. In English-speaking countries, division slash (\div) or division sign (\div) symbols are not used for long division, but instead constructs a tableau.
3. The horizontal bar of fractions, used to indicate division, introduced by the Arabs, although its use did not spread until 16th century.

