

Get better at Math.
Get better at
everything.



Come experience the Cuemath methodology and ensure your child stays ahead at math this summer.



**Adaptive
Platform**



**Interactive Visual
Simulations**



**Personalized
Attention**

For Grades 1 - 10



LIVE online classes
by trained and
certified experts.

Get the Cuemath advantage

Book a FREE trial class

4th Grade Long Division Worksheets

Q.1 Find the quotient of the following using long division: $244 \div 2$

Q.2 At a carnival, four friends bought 336 candies. They want to distribute the candies equally. Can you help them distribute?

Q.3 Joel needs 492 balloons for the party but balloons come in a pack of 6. How many packs should he buy?



Q.4 Kimberly wants to put 999 flowers in flower pots. If one flower pot can contain 9 flowers. How many flower pots does she have to buy?



Q.5 Match the following element in column A which can completely divide the element in column B:

A	B
1. 2	a. 651
2. 3	b. 725
3. 5	c. 828

Q.6 State whether the statement is true or false: On dividing 724 from 4 we get 181 as the quotient.

Q.7 Find the quotient if we divide 624 from 4.

Q.8 How many complete weeks are there for 274 days?

Q.9 Paula was reading a book and if the book has 264 pages and she can read 8 pages in a day. Then how many days will it take her to complete the book?



Q.10 Fill in the blanks

$$\begin{array}{r}
 \boxed{}\boxed{}\boxed{} \\
 4 \overline{) 752} \\
 \underline{- 4} \\
 35 \\
 \underline{- 32} \\
 32 \\
 \underline{- 32} \\
 \textcircled{0} \rightarrow \text{Remainder}
 \end{array}$$

When you learn math
in an interesting way,
you never forget.



25 Million

Math classes &
counting

100K+

Students learning
Math the right way

20+ Countries

Present across USA, UK,
Singapore, India, UAE & more.

Why choose Cuemath?

"Cuemath is a valuable addition to our family. We love solving puzzle cards. My daughter is now visualizing maths and solving problems effectively!"

- Gary Schwartz

"Cuemath is great because my son has a one-on-one interaction with the teacher. The instructor has developed his confidence and I can see progress in his work. One-on-one interaction is perfect and a great bonus."

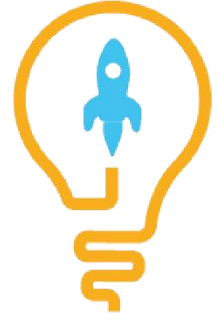
- Kirk Riley

"I appreciate the effort that miss Nitya puts in to help my daughter understand the best methods and to explain why she got a problem incorrect. She is extremely patient and generous with Miranda."

- Barbara Cabrera

Get the Cuemath advantage

Book a FREE trial class

**ANSWERS**

1)	122
2)	84
3)	82
4)	111
5)	1-c, 2-a, 3-b
6)	True
7)	156
8)	39
9)	33
10)	188

FUN FACT

1. The modern algorithm adopted to solve long division was introduced by Henry Briggs c. 1600 A.D.
2. In English-speaking countries, division slash ($/$) or division sign (\div) symbols are not used for long division, but instead constructs a tableau.
3. The horizontal bar of fractions, used to indicate division, introduced by the Arabs, although its use did not spread until 16th century.

