

Get better at Math.  
Get better at  
everything.



Come experience the Cuemath methodology and ensure your child stays ahead at math this summer.



**Adaptive  
Platform**



**Interactive Visual  
Simulations**



**Personalized  
Attention**

For Grades 1 - 10



LIVE online classes  
by trained and  
certified experts.

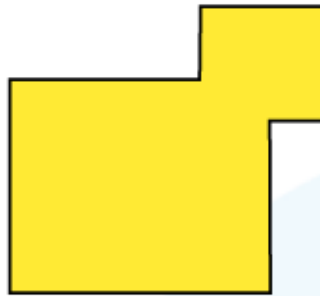
Get the Cuemath advantage

**Book a FREE trial class**

## LINES OF SYMMETRY WORKSHEETS-III

Answer Q.1 and Q.2 based on the given instructions.

1) Draw the lines of symmetry for the following figures.



2) How many lines of symmetry does the above figure has?

3) Is the following statement correct or incorrect with respect to the given figure.

"The dotted line is a line of symmetry for the given shape."



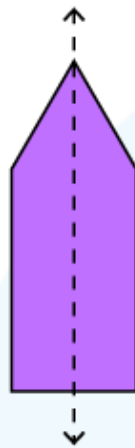
4) Draw a line of symmetry.



5) Draw the second half of the following figure, if it is vertically symmetrical.



6) Check whether the dashed line in the following figure is line of symmetry or not?



7) Tick the correct option.

A rectangle has:

- a) 1 line of symmetry
- b) No lines of symmetry
- c) 2 lines of symmetry

8) Fill in the blank:

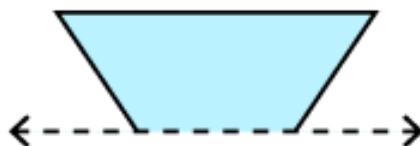
Letter "O" has \_\_\_\_\_ lines of symmetry.

9) Write true/false.

All regular polygons are symmetrical in shape.

\_\_\_\_\_

10) Draw the second symmetrical half of the following figure:



**When you learn math  
in an interesting way,  
you never forget.**



**25 Million**

Math classes &  
counting

**100K+**

Students learning  
Math the right way

**20+ Countries**

Present across USA, UK,  
Singapore, India, UAE & more.

## Why choose Cuemath?

"Cuemath is a valuable addition to our family. We love solving puzzle cards. My daughter is now visualizing maths and solving problems effectively!"

- Gary Schwartz

"Cuemath is great because my son has a one-on-one interaction with the teacher. The instructor has developed his confidence and I can see progress in his work. One-on-one interaction is perfect and a great bonus."

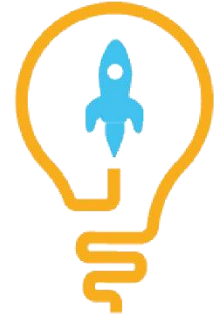
- Kirk Riley

"I appreciate the effort that miss Nitya puts in to help my daughter understand the best methods and to explain why she got a problem incorrect. She is extremely patient and generous with Miranda."

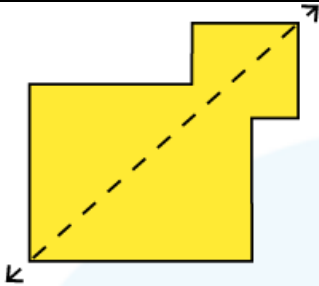
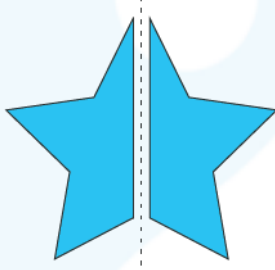
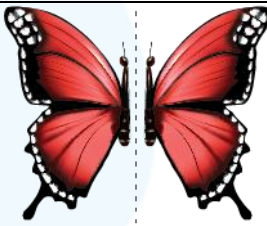
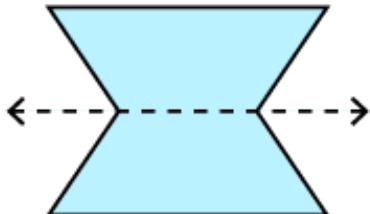
- Barbara Cabrera

Get the Cuemath advantage

**Book a FREE trial class**



**ANSWERS**

1)	
2)	1
3)	Incorrect
4)	
5)	
6)	Yes
7)	c)
8)	Infinite
9)	True
10)	

## FUN FACT

1. The line of symmetry is a line that divides an object into two identical pieces.
2. An object and its image are symmetrical with reference to its mirror line.
3. Symmetry states that one shape is identical to the other shape when it is moved, rotated, or flipped.

