

Get better at Math.
Get better at
everything.



Come experience the Cuemath methodology and ensure your child stays ahead at math this summer.



**Adaptive
Platform**



**Interactive Visual
Simulations**



**Personalized
Attention**

For Grades 1 - 10



LIVE online classes
by trained and
certified experts.

Get the Cuemath advantage

Book a FREE trial class

LINES OF SYMMETRY WORKSHEETS-II

1) Which of the following figures have line(s) of symmetry?



a



b



c

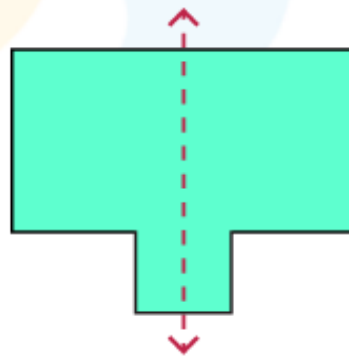


d

2) Does the dotted line represent a line of symmetry?



3) Is the dashed line in the following figure line of symmetry?



4) Tick the correct option.

An isosceles triangle has:

- a) 1 line of symmetry
- b) No lines of symmetry
- c) 2 lines of symmetry

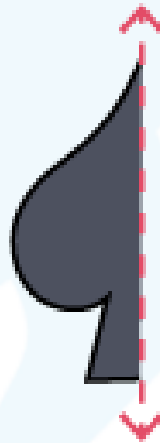
5) Write true/false.

The axis of symmetry creates a mirror image on the other side. _____

6) If the dotted line is the line of reflection symmetry, complete the following figure.



7) Draw the second half of the given shape:



8) The line of symmetry is a line that divides an object into two _____ pieces.

- a) Identical
- b) Different
- c) Unique
- d) None of the above

Answer Q.9 and Q.10 based on the given instructions.

9) Draw the lines of symmetry for the following figures.



10) How many line(s) of symmetry are there on your picture?



**When you learn math
in an interesting way,
you never forget.**



25 Million

Math classes &
counting

100K+

Students learning
Math the right way

20+ Countries

Present across USA, UK,
Singapore, India, UAE & more.

Why choose Cuemath?

"Cuemath is a valuable addition to our family. We love solving puzzle cards. My daughter is now visualizing maths and solving problems effectively!"

- Gary Schwartz

"Cuemath is great because my son has a one-on-one interaction with the teacher. The instructor has developed his confidence and I can see progress in his work. One-on-one interaction is perfect and a great bonus."

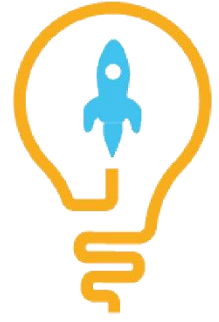
- Kirk Riley

"I appreciate the effort that miss Nitya puts in to help my daughter understand the best methods and to explain why she got a problem incorrect. She is extremely patient and generous with Miranda."

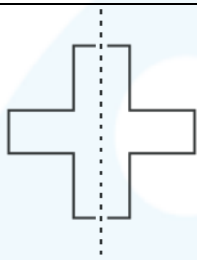


- Barbara Cabrera

Get the Cuemath advantage

Book a FREE trial class



ANSWERS

1)	b), c), d)
2)	No
3)	Yes
4)	a)
5)	True
6)	
7)	
8)	a)
9)	
10)	1

FUN FACT

1. An object and its image are symmetrical with reference to its mirror line.
2. Symmetry states that one shape is identical to the other shape when it is moved, rotated, or flipped.
3. The line of symmetry is a line that divides an object into two identical pieces.

