

Get better at Math.
Get better at
everything.



Come experience the Cuemath methodology and ensure your child stays ahead at math this summer.



**Adaptive
Platform**



**Interactive Visual
Simulations**



**Personalized
Attention**

For Grades 1 - 10



LIVE online classes
by trained and
certified experts.

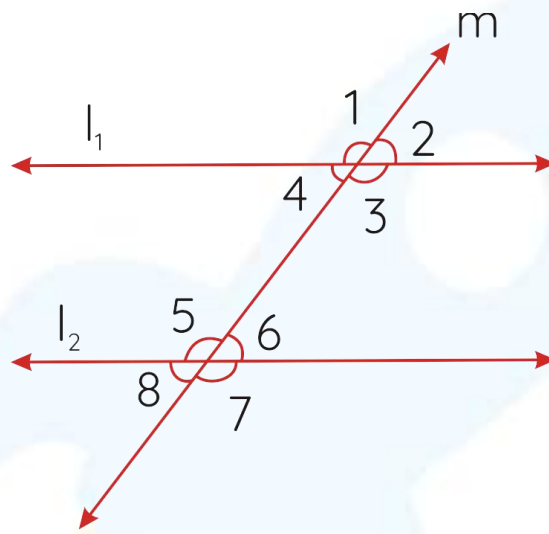
Get the Cuemath advantage

Book a FREE trial class

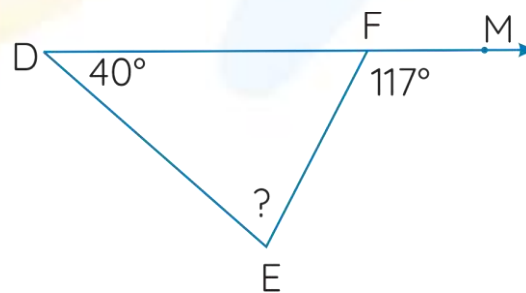
Lines and Angles Worksheet 2

- 1) Two angles are such that the measure of one is twice the measure of the other. The sum of the two angles is 120 degrees. Find the angles.

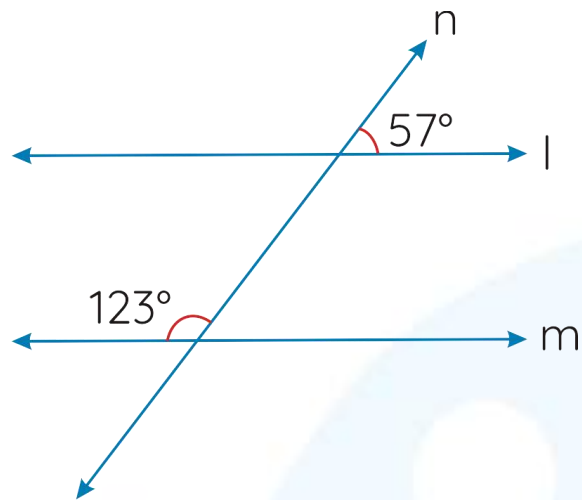
- 2) In the given figure, lines l_1 and l_2 are parallel and line m passes through them. List four pairs of equal angles.



- 3) Find the missing angles in the given figures.



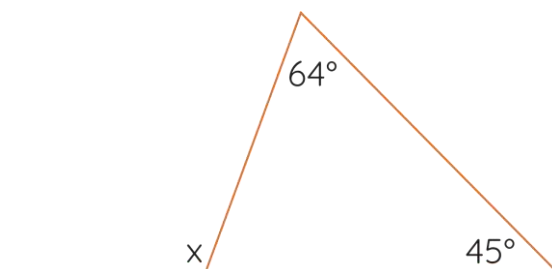
4) Check whether the given lines are parallel or not.



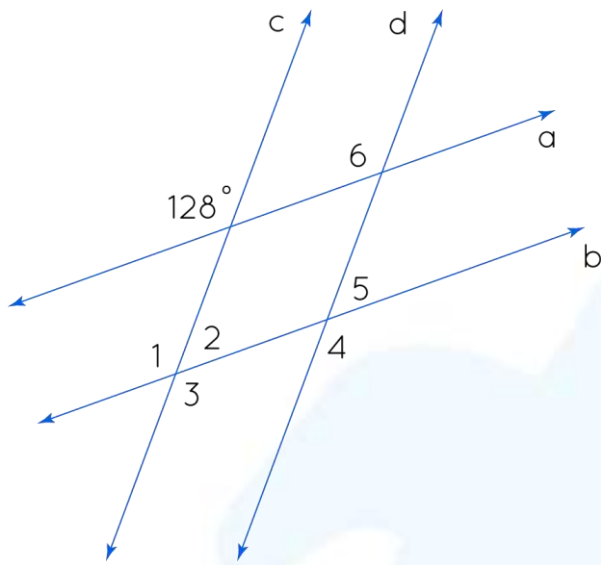
5) Fill in the blanks.

- i) The exterior angles of a polygon always add up to _____.
- ii) The angles around a point always add up to _____.
- iii) Each internal angle of a regular quadrilateral is _____.
- iv) Sum of all the exterior angles of an irregular pentagon is _____.

6) Work out angle x in the given figure.



Line l is parallel to line m . Line P is the transversal. Find the missing angles.



7) $m\angle a =$ _____

8) $m\angle b =$ _____

9) $m\angle c =$ _____

10) $m\angle d =$ _____

**When you learn math
in an interesting way,
you never forget.**



25 Million

Math classes &
counting

100K+

Students learning
Math the right way

20+ Countries

Present across USA, UK,
Singapore, India, UAE & more.

Why choose Cuemath?

"Cuemath is a valuable addition to our family. We love solving puzzle cards. My daughter is now visualizing maths and solving problems effectively!"

- Gary Schwartz

"Cuemath is great because my son has a one-on-one interaction with the teacher. The instructor has developed his confidence and I can see progress in his work. One-on-one interaction is perfect and a great bonus."

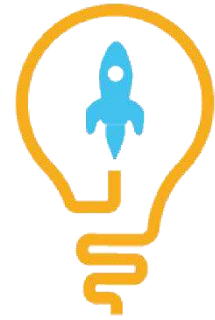
- Kirk Riley

"I appreciate the effort that miss Nitya puts in to help my daughter understand the best methods and to explain why she got a problem incorrect. She is extremely patient and generous with Miranda."

- Barbara Cabrera

Get the Cuemath advantage

Book a FREE trial class

**ANSWERS**

1)	40°
2)	40°
3)	140°
4)	140°
5)	40° and 80°
6)	1 and 5 2 and 6 4 and 8 3 and 7
7)	Angle E measures 77° .
8)	The lines l and m are parallel.
9)	i) The exterior angles of a polygon always add up to 360° . ii) The angles around a point always add up to 360° . iii) Each internal angle of a regular quadrilateral is 90° . iv) Sum of all the exterior angles of an irregular pentagon is 360° .
10)	$x = 109^\circ$

FUN FACT

1. Parallel lines do meet at some point. They meet at infinity.
2. The slopes of parallel lines are always equal.
3. Parallel lines cut by a transversal create 8 angles that have relationships. If you know the measurement of 1 of the angles and the relationship between angles, you can find the remaining 7 angles.

