

Get better at Math.
Get better at
everything.



Come experience the Cuemath methodology and ensure your child stays ahead at math this summer.



**Adaptive
Platform**



**Interactive Visual
Simulations**



**Personalized
Attention**

For Grades 1 - 10



LIVE online classes
by trained and
certified experts.

Get the Cuemath advantage

Book a FREE trial class

GREATEST COMMON FACTOR WORKSHEET-IV

- 1) Match the following pairs of numbers with their greatest common factors.

Number Pairs	GCF
1) $12xy$, $27y$	a) $10x$
2) $30y$, $45xy$	b) $3y$
3) $20x^2$, $50xy$	c) $15y$

- 2) Jackie has 150 oranges, 90 peaches, and 180 pears. She wants to put all of the fruit into baskets with each basket having the same number of fruits in it. Without mixing the fruit, what is the greatest number of fruits Jackie can put in each basket?

- 3) Find the number which will divide 167 and 95 leaving 5 as the remainder.



- 4) The GCF and LCM of two numbers are 5 and 30 respectively. If one of the numbers is 10, find the other number.

5) Find the greatest common factor of the following.

a) 59, 98, 36

b) 184, 230, 276

6) The LCM of the two numbers is 60. If the product of the two numbers is 180, find their HCF.

7) Find the greatest common factor of $9x$ and $27x^2$.

8) Find the greatest common factor of $4y^2$ and $16y^3$.

9) Complete the following table by filling the blocks in the second column against each option in the first column.

Factors of 170	
Factors of 275	
Greatest common factor of 170 and 275	

10) Choose the pair(s) whose greatest common factor is $15x^2$ among the following:

a) $15x$, $180y$

b) $30x^2y$, $60x^2y^2$

c) $60x^2$, $245xy$

d) $150y$, $135x^2$



When you learn math
in an interesting way,
you never forget.



25 Million

Math classes &
counting

100K+

Students learning
Math the right way

20+ Countries

Present across USA, UK,
Singapore, India, UAE & more.

Why choose Cuemath?

"Cuemath is a valuable addition to our family. We love solving puzzle cards. My daughter is now visualizing maths and solving problems effectively!"

- Gary Schwartz

"Cuemath is great because my son has a one-on-one interaction with the teacher. The instructor has developed his confidence and I can see progress in his work. One-on-one interaction is perfect and a great bonus."

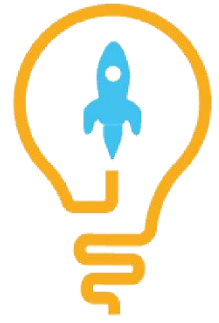
- Kirk Riley

"I appreciate the effort that miss Nitya puts in to help my daughter understand the best methods and to explain why she got a problem incorrect. She is extremely patient and generous with Miranda."

- Barbara Cabrera

Get the Cuemath advantage

Book a FREE trial class

**ANSWERS**

1)	1--b; 2--c; 3--a
2)	30 fruits in each basket
3)	18
4)	15
5)	a) 1 b) 46
6)	3
7)	$9x$
8)	$4y^2$
9)	a) 1, 2, 5, 10, 17, 34, 85, 170 b) 1, 5, 11, 25, 55, 275 c) 5
10)	b) $30x^2y$, $60x^2y^2$

FUN FACT

1. The famous mathematician Euclid was the first to find the method for calculating the HCF, GCF, or GCD.
2. The [GCF](#) of two or more numbers is smaller than or equal to the smallest number of given numbers.
3. The word [factor](#) had its origin from the French word "facteur", meaning a doer maker or performer.

