

Get better at Math.
Get better at
everything.



Come experience the Cuemath methodology and ensure your child stays ahead at math this summer.



**Adaptive
Platform**



**Interactive Visual
Simulations**



**Personalized
Attention**

For Grades 1 - 10



LIVE online classes
by trained and
certified experts.

Get the Cuemath advantage

Book a FREE trial class

GREATEST COMMON FACTOR WORKSHEET-II

1) Choose the pair(s) whose greatest common factor is 15 among the following:

- a) 60, 95
- b) 100, 125
- c) 65, 70
- d) 25, 50

2) Fill in the blanks.

$$8 = 2 \times \underline{\quad} \times \underline{\quad}$$

$$38 = \underline{\quad} \times \underline{\quad}$$

Common factors of 8 and 38: $\underline{\quad}$, $\underline{\quad}$

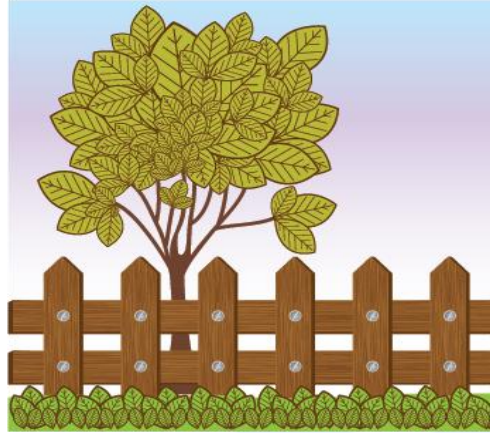
G.C.F. =



3) Match the following pairs of numbers with their greatest common factors.

Number Pairs	GCF
1) 180, 270	a) 1
2) 30, 45	b) 90
3) 19, 51	c) 15

- 4) Two wooden blocks are 12 units and 16 units long. The blocks are to be cut into pieces of equal length to make the vertical columns of a fence. Find the maximum length of each piece.



- 5) Fill in the blanks:
- a) The HCF of two numbers is 1, they are called _____ Numbers.
 - b) The HCF of the given numbers cannot be _____ than the numbers themselves.
- 6) Find the greatest common factor of:
- a) 80 and 50
 - b) 125 and 135
- 7) Find the greatest common factor of the following.
- a) 70 and 14
 - b) 120 and 150
- 8) State whether true or false.
- a) The G.C.F. of two prime numbers can never be 1.
 - b) Two even numbers always have G.C.F. as 2.
- 9) Calculate the greatest common factor of: 65, 13, 52.

- 10) Complete the following table by filling the blocks in the second column against each option in the first column.

Factors of 54	
Factors of 36	
Greatest common factor of 54 and 36	

When you learn math
in an interesting way,
you never forget.



25 Million

Math classes &
counting

100K+

Students learning
Math the right way

20+ Countries

Present across USA, UK,
Singapore, India, UAE & more.

Why choose Cuemath?

"Cuemath is a valuable addition to our family. We love solving puzzle cards. My daughter is now visualizing maths and solving problems effectively!"

- Gary Schwartz

"Cuemath is great because my son has a one-on-one interaction with the teacher. The instructor has developed his confidence and I can see progress in his work. One-on-one interaction is perfect and a great bonus."

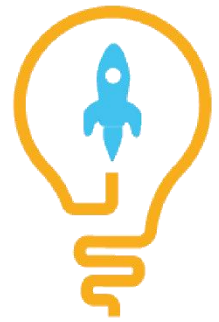
- Kirk Riley

"I appreciate the effort that miss Nitya puts in to help my daughter understand the best methods and to explain why she got a problem incorrect. She is extremely patient and generous with Miranda."

- Barbara Cabrera

Get the Cuemath advantage

Book a FREE trial class

**ANSWERS**

1)	a) 60, 95
2)	2, 2, 2, 19, 1, 2, 2
3)	1--b; 2--c; 3--a
4)	4 units
5)	a) co-prime b) greater
6)	a) 10 b) 5
7)	a) 14 b) 30
8)	a) False b) False
9)	13
10)	a) 1, 2, 3, 6, 9, 18, 27, 54 b) 1, 2, 3, 4, 9, 12, 18, 36 c) 18

FUN FACT

1. The method for finding the HCF, GCF, or GCD was found by the famous mathematician Euclid.
2. The word [factor](#) had its origin from the French word "facteur", meaning a doer maker or performer.
3. The [GCF](#) of two or more numbers is smaller than or equal to the smallest number of given numbers.

