

Get better at Math.
Get better at
everything.



Come experience the Cuemath methodology and ensure your child stays ahead at math this summer.



**Adaptive
Platform**



**Interactive Visual
Simulations**



**Personalized
Attention**

For Grades 1 - 10



LIVE online classes
by trained and
certified experts.

Get the Cuemath advantage

Book a FREE trial class

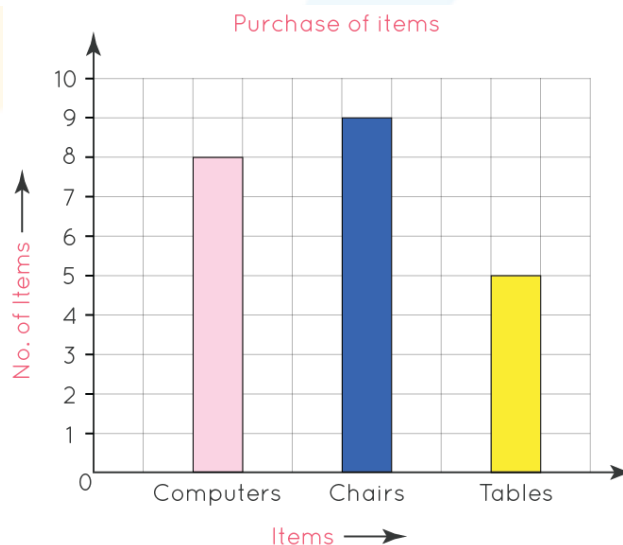
3rd Grade Graphing Worksheet

Q1. The number of mathematics book sold by a shopkeeper on six consecutive days is shown below:

Days	Number of books sold
Sunday	65
Monday	40
Tuesday	30
Wednesday	50
Thursday	20
Friday	70
Saturday	60

Draw a bar graph to represent the above information.

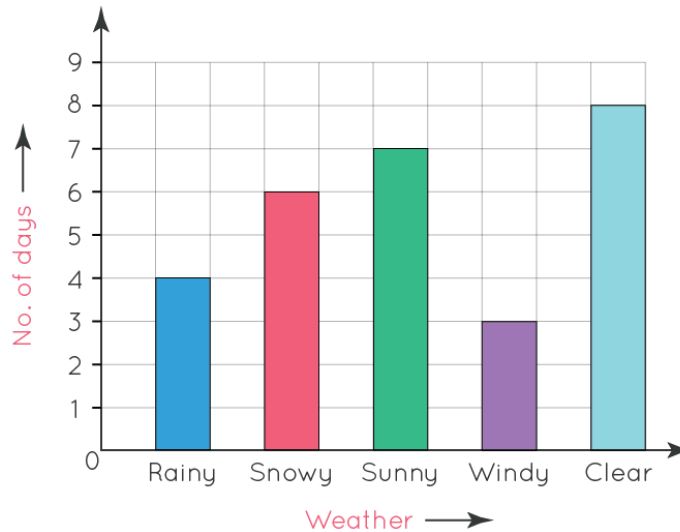
Q2. The following bar graph shows the sale of items: computers, chairs and tables.



Which item had the highest purchase? _____

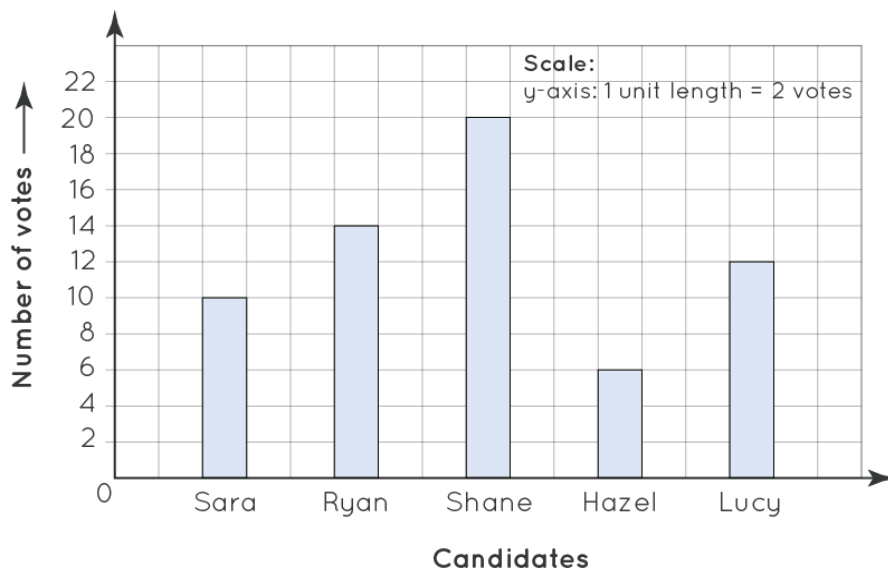
Q3. The graph shows the weather in Boston in the month of February. Can we say that the climate was clear most of the days ? _____

Boston city in the month of February



Q4. All students of Class 5 voted selecting their class monitor. There were five candidates. All the students cast one vote each. The bar graph shows the results.

Votes received by each candidate



What information can you get from this bar graph? Choose the correct options.

- Names of the candidates who stood for the election
- Exact number of girls and boys who voted
- Number of votes received by each candidate
- Names of the people who voted for these candidates

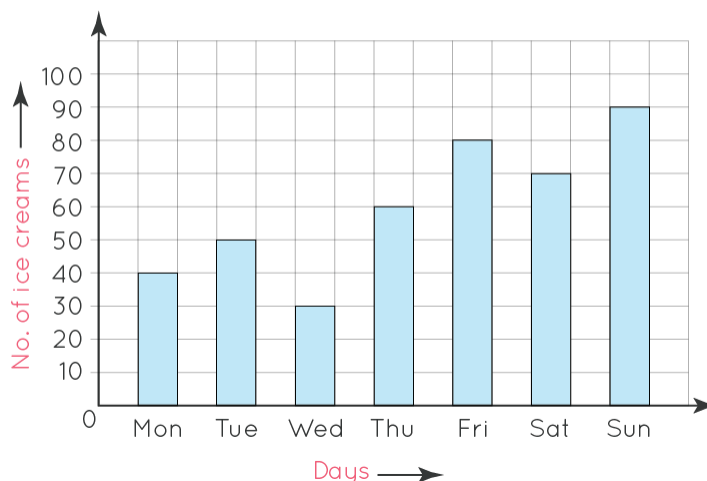
Q5. The given below is a table depicting the information regarding the number of pets owned by 4 friends.

Friends	Number of pets
Sylvia	1
Ashley	3
Ron	2
Jane	2

Represent the above information in the form of a bar graph.

Q6. How many ice creams were sold on Sunday?

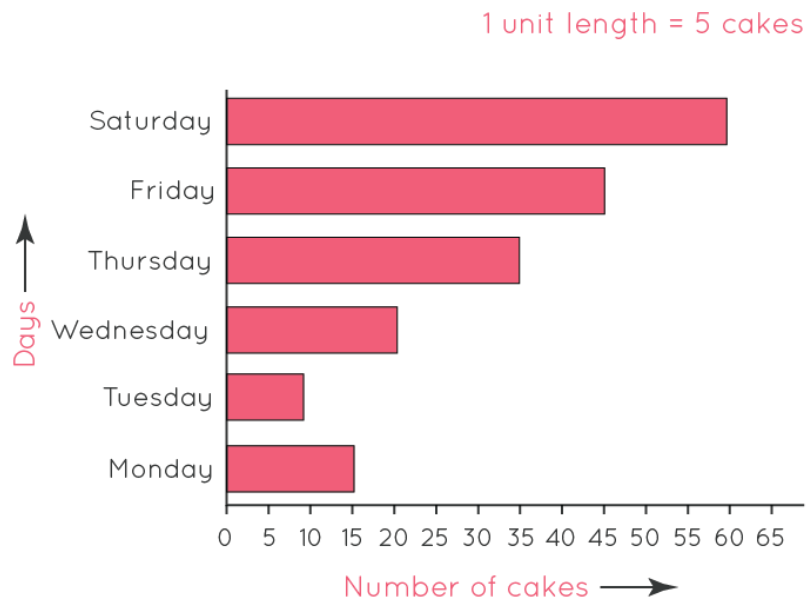
Ice creams sold over the week



Q7. Write true/false.

There must be equal spacing between the bars when we represent data on a bar graph. -----

Q8. Observe this bar graph which is showing the baking of cakes in a bakery from Monday to Saturday.



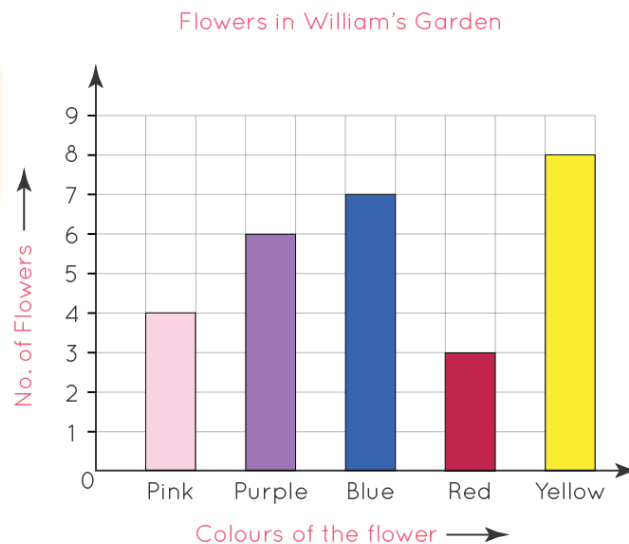
Answer the following question:

On which day were the maximum cakes baked? How many cakes were baked on that day?

Q9. Are the bar graph and bar chart the same?

- a. Yes
- b. No

Q10. The bar graph shows flowers in William's garden.



Which flowers are greater in number? _____

When you learn math
in an interesting way,
you never forget.



25 Million

Math classes &
counting

100K+

Students learning
Math the right way

20+ Countries

Present across USA, UK,
Singapore, India, UAE & more.

Why choose Cuemath?

"Cuemath is a valuable addition to our family. We love solving puzzle cards. My daughter is now visualizing maths and solving problems effectively!"

- Gary Schwartz

"Cuemath is great because my son has a one-on-one interaction with the teacher. The instructor has developed his confidence and I can see progress in his work. One-on-one interaction is perfect and a great bonus."

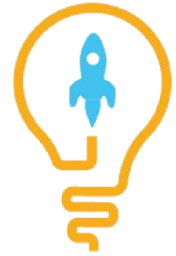
- Kirk Riley

"I appreciate the effort that miss Nitya puts in to help my daughter understand the best methods and to explain why she got a problem incorrect. She is extremely patient and generous with Miranda."

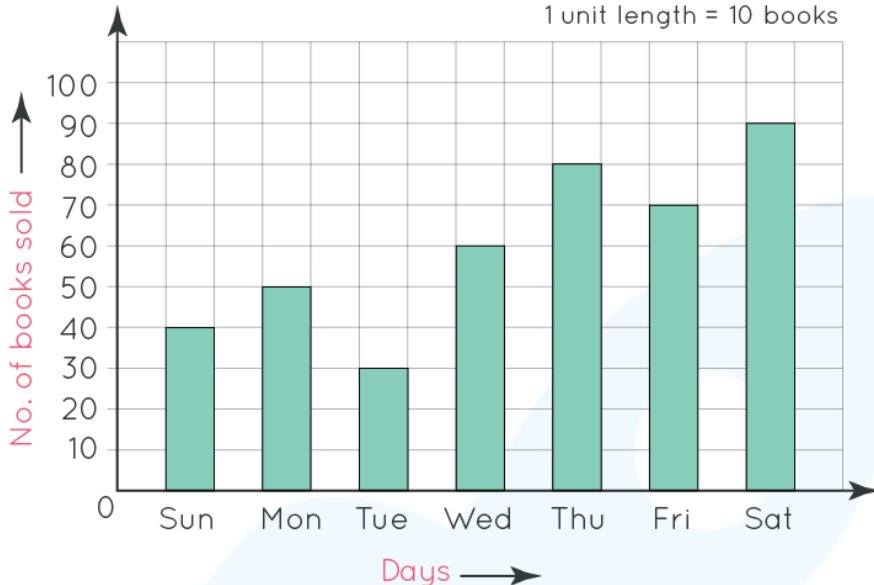
- Barbara Cabrera

Get the Cuemath advantage

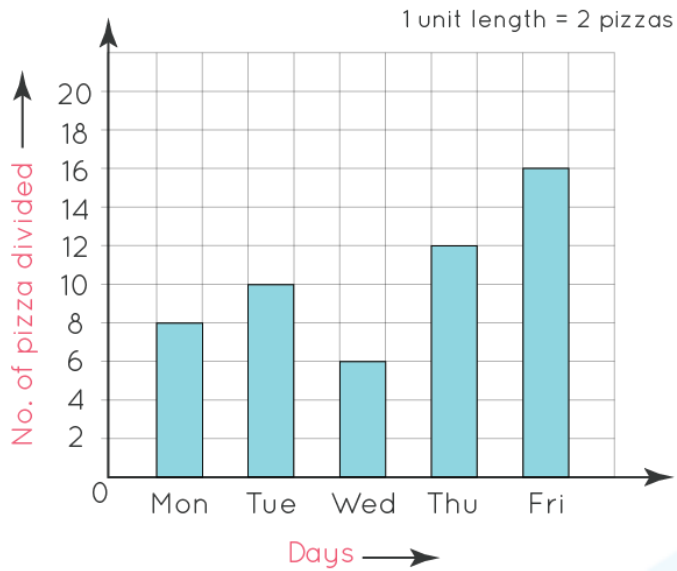
Book a FREE trial class



ANSWERS

1)	<p>1 unit length = 10 books</p>  <table border="1"> <thead> <tr> <th>Day</th> <th>No. of books sold</th> </tr> </thead> <tbody> <tr> <td>Sun</td> <td>40</td> </tr> <tr> <td>Mon</td> <td>50</td> </tr> <tr> <td>Tue</td> <td>30</td> </tr> <tr> <td>Wed</td> <td>60</td> </tr> <tr> <td>Thu</td> <td>80</td> </tr> <tr> <td>Fri</td> <td>70</td> </tr> <tr> <td>Sat</td> <td>90</td> </tr> </tbody> </table>	Day	No. of books sold	Sun	40	Mon	50	Tue	30	Wed	60	Thu	80	Fri	70	Sat	90
Day	No. of books sold																
Sun	40																
Mon	50																
Tue	30																
Wed	60																
Thu	80																
Fri	70																
Sat	90																
2)	Chairs																
3)	Yes																
4)	a. and c.																

5)



6) 90

7) True

8) Saturday, 300 cakes

9) a.

10) Purple

FUN FACT

1. There is one disadvantage of vertical bar graphs is that they don't leave much space at the bottom of the chart if long labels are required to write.
2. A bar graph makes comparisons between different variables easy and convenient.
3. Bar graphs help in analyzing patterns over long periods of time.

