

Get better at Math.
Get better at
everything.



Come experience the Cuemath methodology and ensure your child stays ahead at math this summer.



Adaptive Platform



Interactive Visual Simulations



Personalized Attention

For Grades 1 - 10



LIVE online classes
by trained and
certified experts.

Get the Cuemath advantage

Book a FREE trial class

Expanded Form Worksheets 3rd Grade

1) Write the expanded form of the following numbers.

a) $450 = \underline{\quad\quad} + \underline{\quad\quad} + \underline{\quad\quad}$

b) $382 = \underline{\quad\quad} + \underline{\quad\quad} + \underline{\quad\quad}$

2) Fill in the missing numbers.

a) $823 = \underline{\quad\quad} + 20 + 3$

b) $608 = 600 + \underline{\quad\quad}$

3) Expand the numbers in the board.



4) Fill in the missing numbers by finding the expanded form.

a) $6709 = 6000 + \underline{\quad\quad} + 9$

b) $9888 = \underline{\quad\quad} + 800 + \underline{\quad\quad} + 8$

5) Find the standard form for the number given in the expanded form.

a) $2000 + 500 + 80 + 9 =$

b) $70000 + 3000 + 600 + 70 + 4 =$

6) Write the expanded form of the following numbers.

a) 7583 -

b) 82316 -

7) Find the largest number that can be formed using the 5 digits shown by the butterflies and write its expanded form.



8) There is a 5-digit number. Expanding the ten thousands place's digit gives you 20000. The number in the thousands and tens place is 3. The digit in the hundreds place is the first even number. There are eight ones in the number.

9) Write the expanded form of the following numbers given in words.

a) Six thousand thirteen -

b) Seventy-three thousand eight hundred forty-two -

10) Choose the correct option for the expanded form of the number 22919.

- a) $20000 + 2000 + 900 + 10$
- b) $20000 + 2000 + 900 + 10 + 9$
- c) $20000 + 200 + 900 + 10 + 9$
- d) $20000 + 200 + 9000 + 10 + 9$



**When you learn math
in an interesting way,
you never forget.**



25 Million

Math classes &
counting

100K+

Students learning
Math the right way

20+ Countries

Present across USA, UK,
Singapore, India, UAE & more.

Why choose Cuemath?

"Cuemath is a valuable addition to our family. We love solving puzzle cards. My daughter is now visualizing maths and solving problems effectively!"

- Gary Schwartz

"Cuemath is great because my son has a one-on-one interaction with the teacher. The instructor has developed his confidence and I can see progress in his work. One-on-one interaction is perfect and a great bonus."

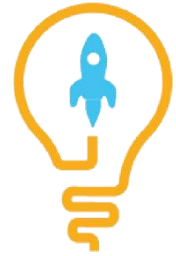
- Kirk Riley

"I appreciate the effort that miss Nitya puts in to help my daughter understand the best methods and to explain why she got a problem incorrect. She is extremely patient and generous with Miranda."

- Barbara Cabrera

Get the Cuemath advantage

Book a FREE trial class

**ANSWERS**

1)	a) $450 = 400 + 50$ b) $382 = 300 + 80 + 2$
2)	a) 800 b) 8
3)	a) $9031 = 9000 + 30 + 1$ b) $7422 = 7000 + 400 + 20 + 2$
4)	a) 700 b) 9000, 80
5)	a) 2589 b) 73674
6)	a) $7583 = 7000 + 500 + 80 + 3$ b) $82316 = 80000 + 2000 + 300 + 10 + 6$

7)	98641 is the number. The expanded form is $90000 + 8000 + 600 + 40 + 1$
8)	23238
9)	a) $6000 + 10 + 3$ b) $70000 + 3000 + 800 + 40 + 2$
10)	$20000 + 2000 + 900 + 10 + 9$

FUN FACT

1. Expanded form is different from expanded notation.
2. In expanded form, addition symbol is used between the place values of all the numbers.
3. In expanded notation, a number is expressed as a sum of all the digits with multiplied place values.

