

Get better at Math.  
Get better at  
everything.



Come experience the Cuemath methodology and ensure your child stays ahead at math this summer.



**Adaptive Platform**



**Interactive Visual Simulations**



**Personalized Attention**

For Grades 1 - 10



LIVE online classes  
by trained and  
certified experts.

Get the Cuemath advantage

**Book a FREE trial class**

## Expanded Form Worksheets 3<sup>rd</sup> Grade

1) Write the expanded form of the following numbers.

a)  $448 = \underline{\quad} + \underline{\quad} + \underline{\quad}$

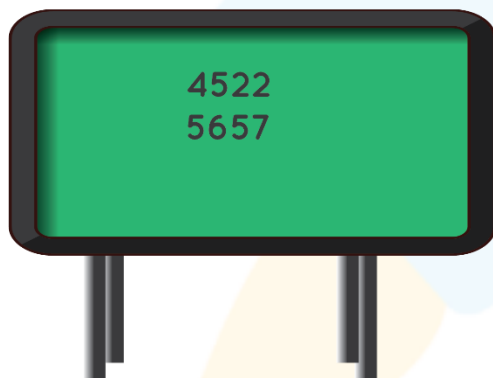
b)  $652 = \underline{\quad} + \underline{\quad} + \underline{\quad}$

2) Fill in the missing numbers.

a)  $910 = \underline{\quad} + 10$

b)  $876 = 800 + \underline{\quad} + 6$

3) Expand the numbers in the board.



4) Fill in the missing numbers by finding the expanded form.

a)  $1209 = 1000 + 200 + \underline{\quad}$

b)  $9652 = \underline{\quad} + 600 + \underline{\quad} + 2$

5) Find the standard form for the number given in the expanded form.

a)  $5000 + 300 + 20 =$

b)  $20000 + 3000 + 500 + 20 + 7 =$

6) Write the expanded form of the following numbers.

a) 5658 –

b) 34364 –

7) Find the largest number that can be formed using the 5 digits shown by the children and write its expanded form.



8) In a period of six months, Grace spent 10000 dollars in the first two months, 8000 dollars in the second two months and 300 dollars in the third two months. How much money did she spend in all?

9) Write the expanded form of the following numbers given in words.

a) Five thousand four hundred and eleven –

b) Thirteen thousand eight hundred and sixty-seven –

10) Choose the correct option for the expanded form of the number 23912.

a)  $20000 + 3000 + 900 + 10 + 2$

b)  $20000 + 3000 + 900 + 2$

c)  $20000 + 3000 + 90 + 10 + 2$

d)  $23000 + 3000 + 900 + 2$



**When you learn math  
in an interesting way,  
you never forget.**



**25 Million**

Math classes &  
counting

**100K+**

Students learning  
Math the right way

**20+ Countries**

Present across USA, UK,  
Singapore, India, UAE & more.

## Why choose Cuemath?

"Cuemath is a valuable addition to our family. We love solving puzzle cards. My daughter is now visualizing maths and solving problems effectively!"

- Gary Schwartz

"Cuemath is great because my son has a one-on-one interaction with the teacher. The instructor has developed his confidence and I can see progress in his work. One-on-one interaction is perfect and a great bonus."

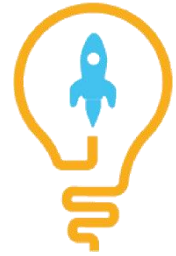
- Kirk Riley

"I appreciate the effort that miss Nitya puts in to help my daughter understand the best methods and to explain why she got a problem incorrect. She is extremely patient and generous with Miranda."

- Barbara Cabrera

Get the Cuemath advantage

**Book a FREE trial class**

**ANSWERS**

1)	a) $448 = 400 + 40 + 8$ b) $652 = 600 + 50 + 2$
2)	a) 900 b) 70
3)	a) $4522 = 4000 + 500 + 20 + 2$ b) $5657 = 5000 + 600 + 50 + 7$
4)	a) 9 b) 9000, 50
5)	a) 5320 b) 23527
6)	a) $5658 = 5000 + 600 + 50 + 8$ b) $34364 = 30000 + 4000 + 300 + 60 + 4$

7)	87643 is the number. The expanded form is $80000 + 7000 + 600 + 40 + 3$
8)	18300 dollars
9)	a) $5000 + 400 + 10 + 1$ b) $13000 + 800 + 60 + 7$
10)	$20000 + 3000 + 900 + 10 + 2$

## FUN FACT

1. Every digit's value can be written in an expanded form.
2. Every number has a place value. We expand numbers by multiplying the place value with the digit.
3. Identify the place names and place values of each digit to write the expanded form easily.

