

Get better at Math.
Get better at
everything.



Come experience the Cuemath methodology and ensure your child stays ahead at math this summer.



**Adaptive
Platform**



**Interactive Visual
Simulations**



**Personalized
Attention**

For Grades 1 - 10



LIVE online classes
by trained and
certified experts.

Get the Cuemath advantage

Book a FREE trial class

Expanded Form Worksheets 3rd Grade

1) Write the expanded form of the following numbers.

a) $231 = \underline{\quad\quad} + \underline{\quad\quad} + \underline{\quad\quad}$

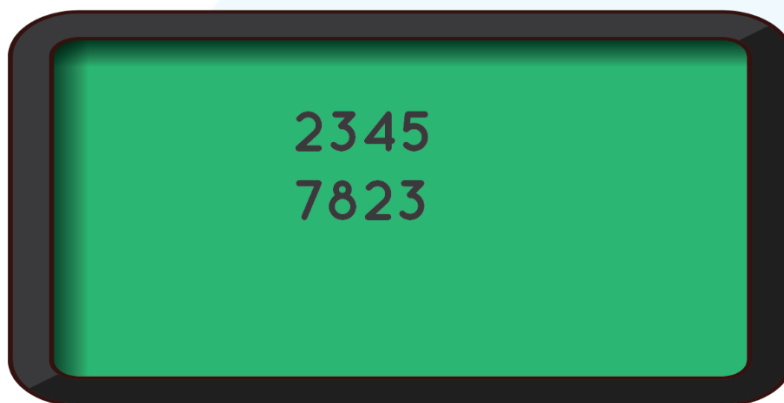
b) $452 = \underline{\quad\quad} + \underline{\quad\quad} + \underline{\quad\quad}$

2) Fill in the missing numbers.

a) $562 = \underline{\quad\quad} + 60 + 2$

b) $723 = 700 + \underline{\quad\quad} + 3$

3) Expand the numbers in the board.



4) Fill in the missing numbers by finding the expanded form.

a) $7785 = 7000 + 700 + \underline{\quad\quad} + 5$

b) $9040 = \underline{\quad\quad} + 40$

5) Find the standard form for the number given in the expanded form.

a) $9000 + 700 + 80 + 5 =$

b) $10000 + 2000 + 400 + 50 + 2 =$

6) Write the expanded form of the following numbers.

a) 8793 -

b) 12342 -

7) Find the largest number that can be formed using the 5 digits given in the board and write its expanded form.



8) Danny had collected some money in a piggy bank. There were 50 hundred-dollar bills, 90 ten-dollar bills and 30 one-dollar bills. How much money did he have in all?

9) Write the expanded form of the following numbers given in words.

a) Nine thousand eight hundred and three -

b) Ten thousand four hundred and forty-eight -

10) Choose the correct option for the expanded form of the number 12012.

- a) $1000 + 2000 + 10 + 2$
- b) $10000 + 2000 + 10 + 2$
- c) $1000 + 2000 + 10 + 2$
- d) $1000 + 2000 + 10 + 12$



**When you learn math
in an interesting way,
you never forget.**



25 Million

Math classes &
counting

100K+

Students learning
Math the right way

20+ Countries

Present across USA, UK,
Singapore, India, UAE & more.

Why choose Cuemath?

"Cuemath is a valuable addition to our family. We love solving puzzle cards. My daughter is now visualizing maths and solving problems effectively!"

- Gary Schwartz

"Cuemath is great because my son has a one-on-one interaction with the teacher. The instructor has developed his confidence and I can see progress in his work. One-on-one interaction is perfect and a great bonus."

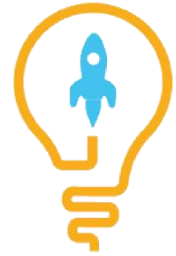
- Kirk Riley

"I appreciate the effort that miss Nitya puts in to help my daughter understand the best methods and to explain why she got a problem incorrect. She is extremely patient and generous with Miranda."

- Barbara Cabrera

Get the Cuemath advantage

Book a FREE trial class

**ANSWERS**

1)	a) $231 = 200 + 30 + 1$ b) $452 = 400 + 50 + 2$
2)	a) 500 b) 20
3)	a) $2345 = 2000 + 300 + 40 + 5$ b) $7823 = 7000 + 800 + 20 + 3$
4)	a) 80 b) 9000
5)	a) 9785 b) 12452
6)	a) $8793 = 8000 + 700 + 90 + 3$ b) $12342 = 10000 + 2000 + 300 + 40 + 2$

7)	96541 is the number. The expanded form is $90000 + 6000 + 500 + 40 + 1$
8)	5930 dollars
9)	a) $9000 + 800 + 3$ b) $10000 + 400 + 40 + 8$
10)	$10000 + 2000 + 10 + 2$

FUN FACT

1. Splitting or breaking a number according to its place values gives the expanded form.
2. Expanded form helps us to easily understand how a number is formed.
3. As a first step to expand a number, find out the place values of all the digits.

