

Get better at Math.
Get better at
everything.



Come experience the Cuemath methodology and ensure your child stays ahead at math this summer.



**Adaptive
Platform**



**Interactive Visual
Simulations**



**Personalized
Attention**

For Grades 1 - 10



LIVE online classes
by trained and
certified experts.

Get the Cuemath advantage

Book a FREE trial class

Even and Odd Worksheet 2nd Grade

Q.1. Which of the following is an even number?

- a. 113
- b. 122
- c. 143
- d. 157

Q.2. The sum of 320 and 425 gives a ___ number.

- a. even
- b. odd

Q.3. Fill in the blanks below.

The next even number after 728 is ____.

Q.4. Is 672 an even number?

Q.5. Tabulate the following.

484, 225, 326, 289

Odd Numbers	Even Numbers

Q.6. What is the next odd number in the series?

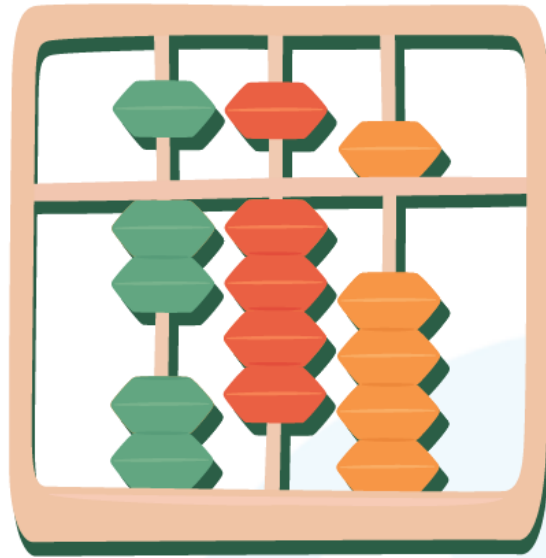
151, 153, 155, ____

- a. 157
- b. 159

Q.7. The numbers 652 and 898 are ____ numbers.

- a. odd
- b. even

Q.8. Is the number looking on abacus even or odd?



- a. Odd
- b. Even

Q.9. What are the odd numbers between 99 and 115?

Q.10. Select the odd one out.

- a. 1001
- b. 998
- c. 997
- d. 999

When you learn math
in an interesting way,
you never forget.



25 Million

Math classes &
counting

100K+

Students learning
Math the right way

20+ Countries

Present across USA, UK,
Singapore, India, UAE & more.

Why choose Cuemath?

"Cuemath is a valuable addition to our family. We love solving puzzle cards. My daughter is now visualizing maths and solving problems effectively!"

- Gary Schwartz

"Cuemath is great because my son has a one-on-one interaction with the teacher. The instructor has developed his confidence and I can see progress in his work. One-on-one interaction is perfect and a great bonus."

- Kirk Riley

"I appreciate the effort that miss Nitya puts in to help my daughter understand the best methods and to explain why she got a problem incorrect. She is extremely patient and generous with Miranda."

- Barbara Cabrera

Get the Cuemath advantage

Book a FREE trial class

**ANSWERS**

1)	b.
2)	b.
3)	730
4)	Yes
5)	Odd numbers - 225, 289 Even numbers - 484, 326
6)	a.

7)	b.
8)	a.
9)	101, 103, 105, 107, 109, 111 and 113.
10)	b.

FUN FACT

1. If a number does not divide by 2 entirely, it is an odd number.
2. Double of an odd number is an even number. For example, $53 \times 2 = 106$.
3. Double of an even number is also an even number. For example, $42 \times 2 = 84$.

