

Get better at Math.
Get better at
everything.



Come experience the Cuemath methodology and ensure your child stays ahead at math this summer.



**Adaptive
Platform**



**Interactive Visual
Simulations**



**Personalized
Attention**

For Grades 1 - 10



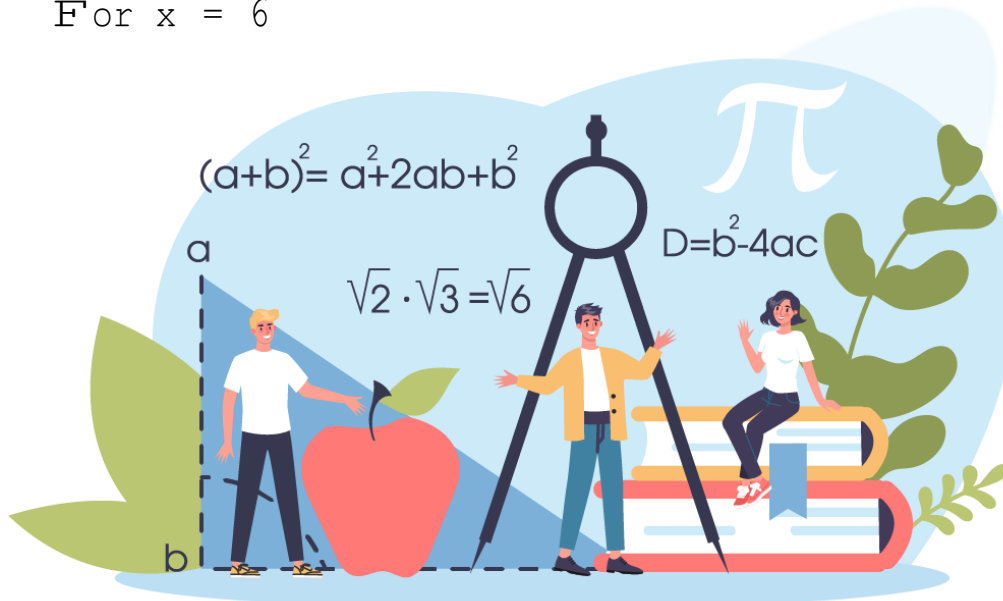
LIVE online classes
by trained and
certified experts.

Get the Cuemath advantage

Book a FREE trial class

DOMAIN AND RANGE WORKSHEETS

1. What is the domain of the function $f(x) = x + 1$?
2. What is the range of the function $f(x) = x \log x$?
3. Find the codomain for the function $f(x) = 3x - 7$.
For $x = 6$



4. What is the range of the function $f(x) = 4x - 1$, for the positive integral values of x ?
5. Find the domain and range of the function $f(x) = \cos x$.
6. What is range of the function $f(x) = x^3$ for the domain values as real numbers?
7. The range of the function $f(x) = 1/x^n$ is real number value. What is the possible values of n ?
(a) Even number (b) odd number
8. What of the following functions has a range of $\{5, \dots, \infty\}$?
(a) $f(x) = x + 5$ (b) $f(x) = 1/(x + 5)$
(c) $f(x) = 2x - 5$ (d) $f(x) = 2x + 5$

9. For a function $f(x) = 4x - 1$, find the range for x values = $\{0, 1, 2, 3, 4, 5\}$.

10. What is the range of the function $f(x) = 1/|x|$?



**When you learn math
in an interesting way,
you never forget.**



25 Million

Math classes &
counting

100K+

Students learning
Math the right way

20+ Countries

Present across USA, UK,
Singapore, India, UAE & more.

Why choose Cuemath?

"Cuemath is a valuable addition to our family. We love solving puzzle cards. My daughter is now visualizing maths and solving problems effectively!"

- Gary Schwartz

"Cuemath is great because my son has a one-on-one interaction with the teacher. The instructor has developed his confidence and I can see progress in his work. One-on-one interaction is perfect and a great bonus."

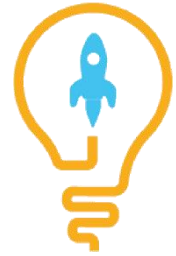
- Kirk Riley

"I appreciate the effort that miss Nitya puts in to help my daughter understand the best methods and to explain why she got a problem incorrect. She is extremely patient and generous with Miranda."

- Barbara Cabrera

Get the Cuemath advantage

Book a FREE trial class

**ANSWERS**

1)	\mathbb{R}
2)	\mathbb{R}^+
3)	11
4)	$[-1, \infty)$
5)	Domain = \mathbb{R} Range = $[-1, 1]$
6)	\mathbb{R}

7)	(a) Even number
8)	(c). $f(x) = 2x - 5$
9)	$(-1, 3, 7, 11, 15, 19)$
10)	$(0, 1)$