

Get better at Math.  
Get better at  
everything.



Come experience the Cuemath methodology and ensure your child stays ahead at math this summer.



**Adaptive Platform**



**Interactive Visual Simulations**



**Personalized Attention**

For Grades 1 - 10



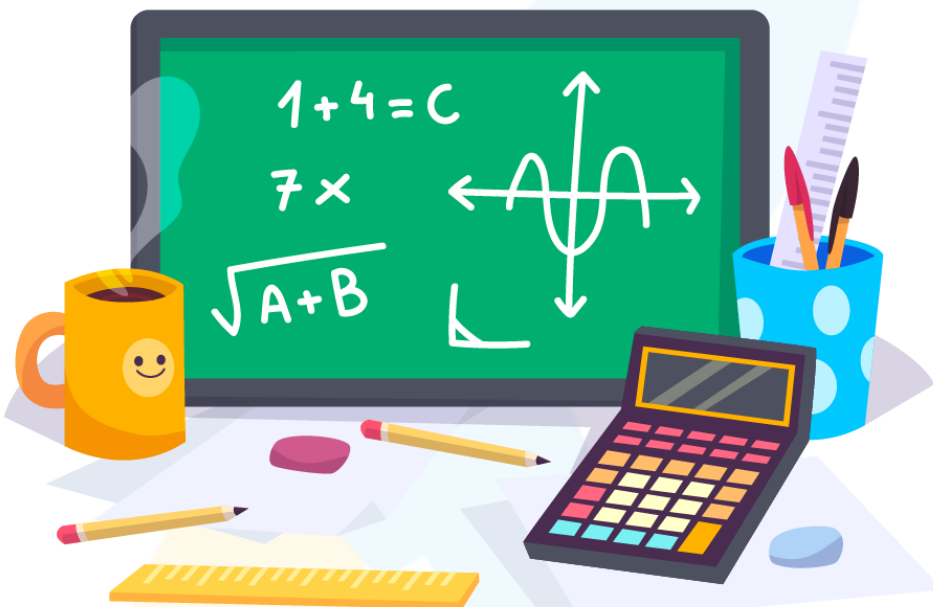
LIVE online classes  
by trained and  
certified experts.

Get the Cuemath advantage

**Book a FREE trial class**

## DOMAIN AND RANGE WORKSHEETS

1. Find the domain and range of the function  $F(x) = \sqrt{(25 - x^2)}$ .
2. Find the range of  $F(x) = 1 + 3\sin 4x$   
(a)  $[2, 3]$       (b)  $[2, 4]$       (c)  $[-2, 4]$       (d) none of these
3. Domain of  $\sqrt{(a^2 - x^2)}$  ( $a > 0$ ) is \_\_\_\_\_.



4. The domain of  $\sqrt{[4 - x/(x-7)]}$  is \_\_\_\_\_.
5. Let  $F(x) = x^2/(1 + x^2)$  be a function from  $\mathbb{R}$  to  $\mathbb{R}$ . Determine the range of  $F$ .  
(a)  $[0, 1)$       (b)  $[(0, 1]$       (c)  $[0, 2)$       (d) none of these
6. Find the domain of the function  $F(x) = 1 / \sqrt{|x|}$ .  
(a)  $\mathbb{R}$       (b)  $\mathbb{R}^+$       (c)  $\mathbb{R}^-$       (d) None of these
7. Find the domain and range of the function  $F$  defined by  $F(x) = 3 - x / (x - 3)$ .

8. The domain of the function  $F$  given by  $F(x) = (2x + 1) / (X^2 - 5x + 6)$

(a)  $\mathbb{R} - \{3, -2\}$       (b)  $\mathbb{R} - \{-3, 2\}$       (c)  $\mathbb{R} - [3, 2]$       (d)  $\mathbb{R} - (3, -2)$

9. The range of the function  $f(x) = 2x^2 + 5$ .

10. Find the domain and range of the function  $F(x) = \sqrt{27 - x^3}$ .

(a)  $[-3, 3], [0, \sqrt{3}]$       (b)  $[-0, 3], [0, 3]$       (c)  $[0. 3], [0, 3\sqrt{3}]$       (d) none of these

**When you learn math  
in an interesting way,  
you never forget.**



**25 Million**

Math classes &  
counting

**100K+**

Students learning  
Math the right way

**20+ Countries**

Present across USA, UK,  
Singapore, India, UAE & more.

## Why choose Cuemath?

"Cuemath is a valuable addition to our family. We love solving puzzle cards. My daughter is now visualizing maths and solving problems effectively!"

- Gary Schwartz

"Cuemath is great because my son has a one-on-one interaction with the teacher. The instructor has developed his confidence and I can see progress in his work. One-on-one interaction is perfect and a great bonus."

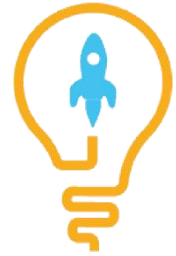
- Kirk Riley

"I appreciate the effort that miss Nitya puts in to help my daughter understand the best methods and to explain why she got a problem incorrect. She is extremely patient and generous with Miranda."

- Barbara Cabrera

Get the Cuemath advantage

**Book a FREE trial class**

**ANSWERS**

1)	$[-5, 5], [0, 5]$
2)	(c) $[-2, 4]$
3)	$[-a, a]$
4)	$\mathbb{R} - [7]$
5)	(c) $[0, 2)$
6)	(a) $\mathbb{R}$

7)	Domain = $\mathbb{R} - [3]$ Range = $[-1]$
8)	(c) $\mathbb{R} - [3, 2]$
9)	$[5, \infty)$
10)	(c) $[0, 3], [0, 3\sqrt{3}]$