

Get better at Math.  
Get better at  
everything.



Come experience the Cuemath methodology and ensure your child stays ahead at math this summer.



**Adaptive  
Platform**



**Interactive Visual  
Simulations**



**Personalized  
Attention**

For Grades 1 - 10



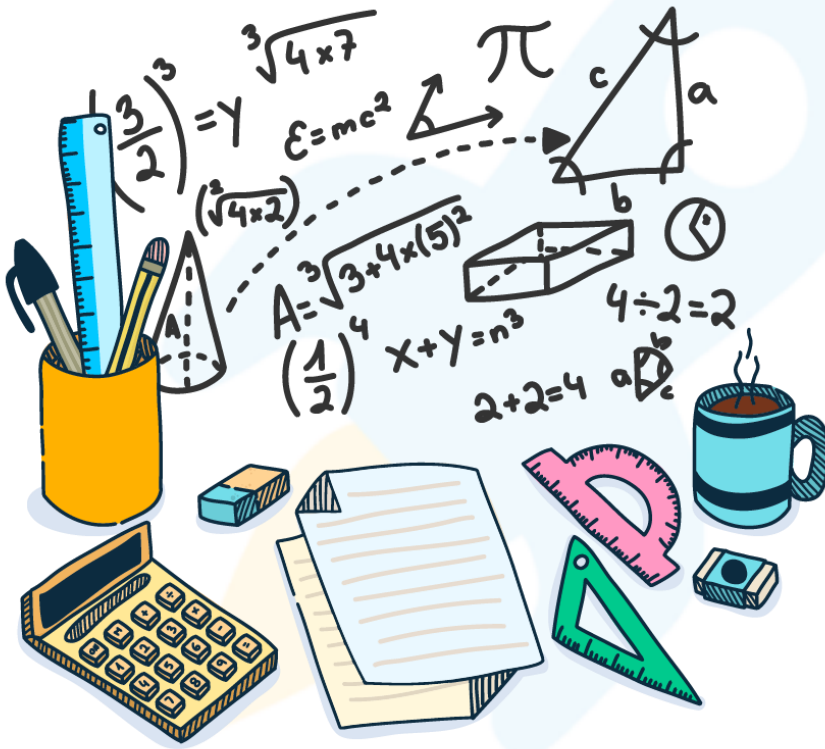
LIVE online classes  
by trained and  
certified experts.

Get the Cuemath advantage

**Book a FREE trial class**

## DOMAIN AND RANGE WORKSHEETS

1. What is the domain of the function  $f(x) = 1/(x + 1)$ ?
2. What is the range of the function  $f(x) = \log x$ ?
3. Find the codomain for the function  $f(x) = 2x + 5$ .  
For  $x = 5$



4. What is the range of the function  $f(x) = 2x - 5$ , for the positive integral values of  $x$ ?
5. Find the domain and range of the function  $f(x) = \sin x$ .
6. What is range of the function  $f(x) = x^2$  for the domain values as real numbers?
7. The range of the function  $f(x) = x^n$  is real number value. What is the possible values of  $n$ ?  
(a) Even number                      (b) odd number

8. What of the following functions has a range of  $\{-2, \dots, \infty\}$ ?

- (a)  $f(x) = 3x + 1$                       (b)  $f(x) = 3x - 1$                       (c)  
 $f(x) = x - 2$                       (d)  $f(x) = x + 2$

9. For a function  $f(x) = 3x + 5$ , find the range for  $x$  values =  $\{0, 1, 2, 3, 4, 5\}$ .

10. What is the range of the function  $f(x) = |x|$ ?



**When you learn math  
in an interesting way,  
you never forget.**



**25 Million**

Math classes &  
counting

**100K+**

Students learning  
Math the right way

**20+ Countries**

Present across USA, UK,  
Singapore, India, UAE & more.

## Why choose Cuemath?

"Cuemath is a valuable addition to our family. We love solving puzzle cards. My daughter is now visualizing maths and solving problems effectively!"

- Gary Schwartz

"Cuemath is great because my son has a one-on-one interaction with the teacher. The instructor has developed his confidence and I can see progress in his work. One-on-one interaction is perfect and a great bonus."

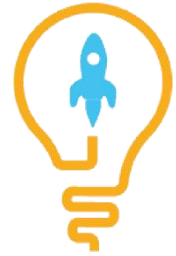
- Kirk Riley

"I appreciate the effort that miss Nitya puts in to help my daughter understand the best methods and to explain why she got a problem incorrect. She is extremely patient and generous with Miranda."

- Barbara Cabrera

Get the Cuemath advantage

**Book a FREE trial class**

**ANSWERS**

1)	$\mathbb{R} - [-1]$
2)	$\mathbb{R}^+$
3)	15
4)	$[-5, \infty)$
5)	Domain = $\mathbb{R}$ Range = $[-1, 1]$
6)	$\mathbb{R}^+$

7)	(a) Even number
8)	(c). $f(x) = x - 2$
9)	(5, 8, 11, 14, 17, 20)
10)	$\mathbb{R}^+$