

Get better at Math.
Get better at
everything.



Come experience the Cuemath methodology and ensure your child stays ahead at math this summer.



**Adaptive
Platform**



**Interactive Visual
Simulations**



**Personalized
Attention**

For Grades 1 - 10



LIVE online classes
by trained and
certified experts.

Get the Cuemath advantage

Book a FREE trial class

Division Equal Groups Worksheet-2

1) Fill In the Blanks given:



There are _____ equal groups of _____ candies.

- 2) How many equal groups can be formed of 250, if there are only 2 items in each group?
- 3) If a box has 10 candies, can all the candies be equally distributed among 2 children? If yes, how many candies will each child get?
- 4) 90 tissues are equally packed in the boxes shown. How many tissues does each box have?



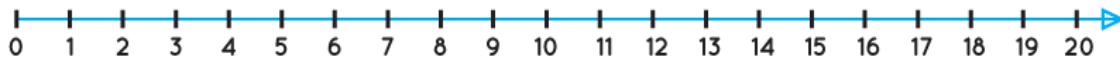
5) State true or false for each of the given division facts.

a) $160 \div 8 = 20$

b) $475 \div 5 = 60$

6) Show the division fact on the given number line:

Eighteen items have to be divided into groups of nine.



Number of groups formed =

7) Divide the following number of items into equal groups such that each group will have 4 items. Write your answers in the box.

a) 424

b) 832

8) If a bell rings in every 3 minutes, how many times does it ring in 15 minutes?

9) If the capacity of a box is 10 glasses. Can we fit 100 glasses into those boxes without any left out? If yes, find the number of boxes required.

10) Dom and Tam agreed to share 24 ice cubes equally amongst them. How many ice cubes will each of them get?

When you learn math
in an interesting way,
you never forget.



25 Million

Math classes &
counting

100K+

Students learning
Math the right way

20+ Countries

Present across USA, UK,
Singapore, India, UAE & more.

Why choose Cuemath?

"Cuemath is a valuable addition to our family. We love solving puzzle cards. My daughter is now visualizing maths and solving problems effectively!"

- Gary Schwartz

"Cuemath is great because my son has a one-on-one interaction with the teacher. The instructor has developed his confidence and I can see progress in his work. One-on-one interaction is perfect and a great bonus."

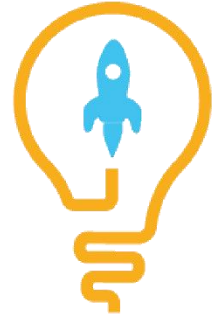
- Kirk Riley

"I appreciate the effort that miss Nitya puts in to help my daughter understand the best methods and to explain why she got a problem incorrect. She is extremely patient and generous with Miranda."

- Barbara Cabrera

Get the Cuemath advantage

Book a FREE trial class

**ANSWERS**

1)	2 equal groups of 6 candies
2)	125
3)	5
4)	45
5)	a-True, b-False
6)	2
7)	a-106, b-208
8)	5
9)	10
10)	14

FUN FACT

1. Multiplication is the inverse operation of division.
2. Division is one of the four basic arithmetic operations along with addition, subtraction and multiplication.
3. Symbol used for division is \div or $/$.

