

Get better at Math.
Get better at
everything.



Come experience the Cuemath methodology and ensure your child stays ahead at math this summer.



**Adaptive
Platform**



**Interactive Visual
Simulations**



**Personalized
Attention**

For Grades 1 - 10



LIVE online classes
by trained and
certified experts.

Get the Cuemath advantage

Book a FREE trial class

DIVIDING WITH TWO DIGIT DIVISOR WORKSHEET - 2

- 1) Flora owns a large and beautiful garden where she plants flowers. She has 450 flowers in all and 18 flowers in each row. How many rows are there?



- 2) Find the quotient and remainder for the division problem shown below.

$$39 \overline{) 87,670}$$

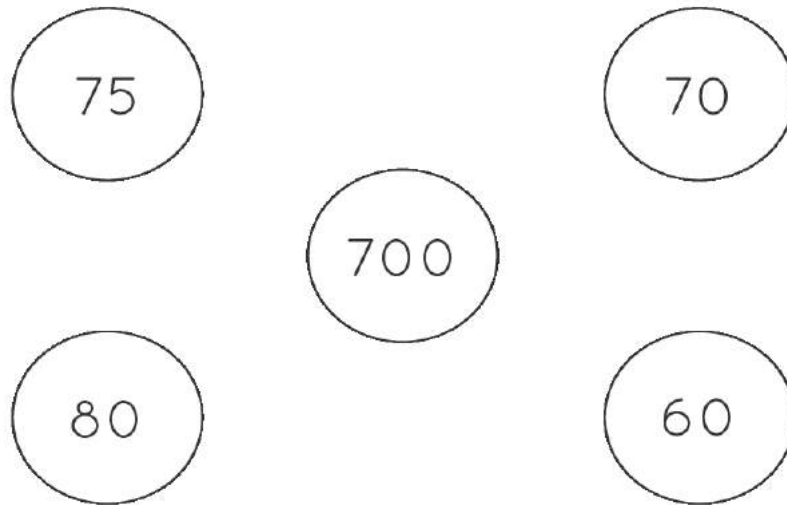
- 3) Match the following element in column A which can completely divide the element in column B.

A	B
1. 14	a. 285
2. 24	b. 350
3. 15	c. 216

- 4) State whether the statement is true or false.
 On dividing 1344 by 84 we get 16 as the quotient.
- 5) Choose any two numbers to fill the equation: $3380 \div \underline{\hspace{1cm}} = \underline{\hspace{1cm}}$

51, 52, 65, 67

6) Fill color in the correct answer: $900 \div 15$



7) Olivia took 9 hours to cover 126 miles. Find the speed by which she is travelling.



8) Divide the following:

a) $5040 \div 16 = \underline{\hspace{2cm}}$

b) $899 \div 29 = \underline{\hspace{2cm}}$

9) Fill the blanks:

a) If we divide any even number by 2, then the remainder is always _____.

b) The number that is left out after dividing one number from another is known as _____.

10) Write two division facts by using the numbers 147, 8 and 1176.



When you learn math
in an interesting way,
you never forget.



25 Million

Math classes &
counting

100K+

Students learning
Math the right way

20+ Countries

Present across USA, UK,
Singapore, India, UAE & more.

Why choose Cuemath?

"Cuemath is a valuable addition to our family. We love solving puzzle cards. My daughter is now visualizing maths and solving problems effectively!"

- Gary Schwartz

"Cuemath is great because my son has a one-on-one interaction with the teacher. The instructor has developed his confidence and I can see progress in his work. One-on-one interaction is perfect and a great bonus."

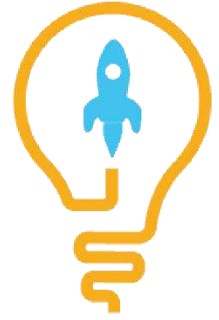
- Kirk Riley

"I appreciate the effort that miss Nitya puts in to help my daughter understand the best methods and to explain why she got a problem incorrect. She is extremely patient and generous with Miranda."

- Barbara Cabrera

Get the Cuemath advantage

Book a FREE trial class

**ANSWERS**

1)	450
2)	Quotient = 2247, Remainder = 37
3)	1--b; 2--c; 3--a
4)	True
5)	52, 65
6)	60
7)	14 miles per hour
8)	a) 315, b) 31
9)	a) 0, b) Remainder
10)	$1176 \div 8 = 147$, $1176 \div 147 = 8$

FUN FACT

1. Division is nothing but equal grouping and equal sharing of items.
2. If a number 'a' is exactly divisible by 'b', then it leaves the remainder 0.
3. A number that exactly divides a given number is called a factor.

