

Get better at Math.
Get better at
everything.



Come experience the Cuemath methodology and ensure your child stays ahead at math this summer.



**Adaptive
Platform**



**Interactive Visual
Simulations**



**Personalized
Attention**

For Grades 1 - 10



LIVE online classes
by trained and
certified experts.

Get the Cuemath advantage

Book a FREE trial class

DIVIDING DECIMALS BY WHOLE NUMBERS WORKSHEET - 1

1) Match the following.

a) $1.9 \div 10$	i) 0.0019
b) $0.19 \div 100$	ii) 190
c) $19 \div 0.1$	iii) 0.19

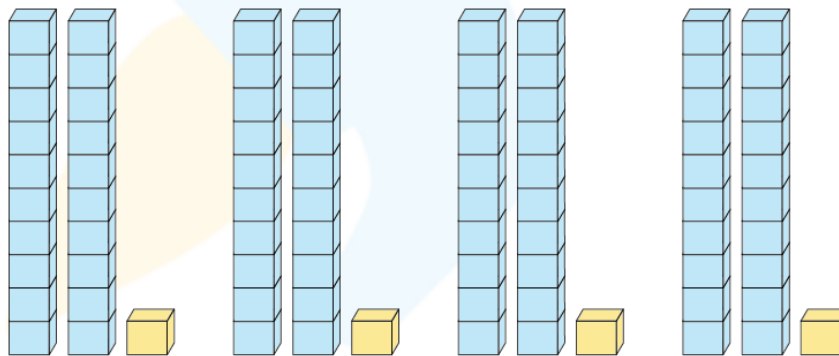
2) Divide:

a) $0.24 \div 12$

b) $22.5 \div 5$

3) Use the model shown below and complete the division equation.

$$0.84 \div 4 = \underline{\quad\quad}$$



4) Find the breadth of a rectangle whose area and length are 882.32 unit^2 and 16 units respectively.

5) Which of the following division equation(s) is/are correct?

a) $0.01 \div 10 = 1000$

b) $0.1 \div 10 = 0.01$

c) $1.11 \div 100 = 11.1$

6) Choose a number from the list shown below such that to fill the division equation: $\underline{\quad\quad} \div 4 = 0.22$

0.44, 0.84, 0.88, 0.69, 1.1

7) A factory used 406 kilograms of sugar to make chocolates in 4 batches. How many kilograms of sugar did the factory use in each batch?



8) What do we get when 6.036 is divided by 6?

9) Fill in the blank with a correct decimal number.

$$515.46 \div 426 = \underline{\quad\quad}$$

10) What number should be divided by 41.6 so that the answer is 5.2?

**When you learn math
in an interesting way,
you never forget.**



25 Million

Math classes &
counting

100K+

Students learning
Math the right way

20+ Countries

Present across USA, UK,
Singapore, India, UAE & more.

Why choose Cuemath?

"Cuemath is a valuable addition to our family. We love solving puzzle cards. My daughter is now visualizing maths and solving problems effectively!"

- Gary Schwartz

"Cuemath is great because my son has a one-on-one interaction with the teacher. The instructor has developed his confidence and I can see progress in his work. One-on-one interaction is perfect and a great bonus."

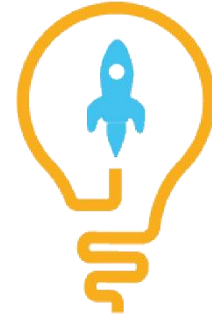
- Kirk Riley

"I appreciate the effort that miss Nitya puts in to help my daughter understand the best methods and to explain why she got a problem incorrect. She is extremely patient and generous with Miranda."

- Barbara Cabrera

Get the Cuemath advantage

Book a FREE trial class

**ANSWERS**

1)	a) - iii), b) - i), c) - ii)
2)	a) 0.02, b) 4.5
3)	0.21
4)	55.145 units
5)	b) $0.1 \div 10 = 0.01$
6)	0.88
7)	101.5 kilograms
8)	1.006
9)	1.21
10)	8

FUN FACT

1. The fractional part of a decimal number is given by the part after the decimal point.
2. As we move towards left from the decimal point, the place value of digits gets multiplied by 10.
3. As we move towards right from the decimal point, the place value of digits

