

Get better at Math.  
Get better at  
everything.



Come experience the Cuemath methodology and ensure your child stays ahead at math this summer.



**Adaptive  
Platform**



**Interactive Visual  
Simulations**



**Personalized  
Attention**

For Grades 1 - 10



LIVE online classes  
by trained and  
certified experts.

Get the Cuemath advantage

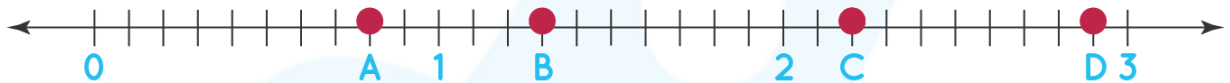
**Book a FREE trial class**

## Decimal Worksheet-2

1) Choose the decimal number which is equivalent to 0.6.

- a) 0.06
- b) 0.60
- c) 6.0

2) Write the decimal numbers represented by the points A, B, C and D on the number line.

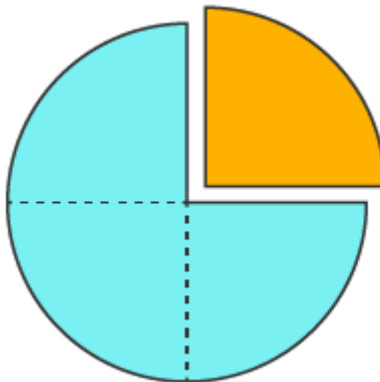


3) Fill in the blanks with correct decimal numbers.

- a) \_\_\_\_ is two times of 0.7
- b) The sum of 56.1 and 420.7 is \_\_\_\_.

4) The following pie chart is shaded with two colors: blue and orange.

- a) Write the decimal representation for each part.
- b) Which part is shaded the most and by how much?



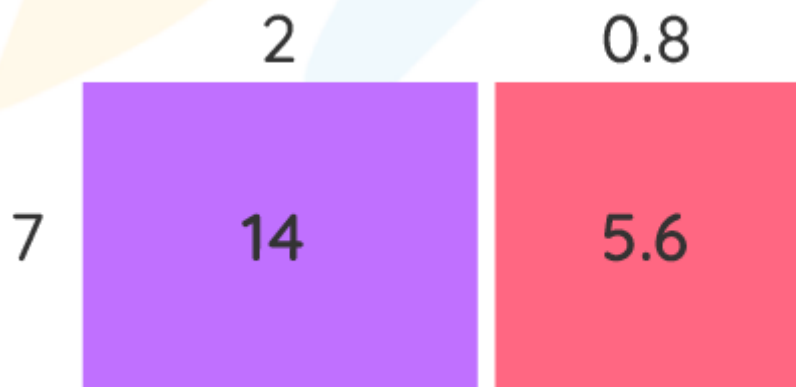
5) Andrea walks 1.3 miles in one round every day in the morning.  
Find the distance she travels everyday if she takes 5 rounds.

6) Plot the decimal numbers shown below on a number line and  
write the number nearest to 1.

0.6, 0.1, 0.5, 0.3

7) Milie has 4.2 grams of pepper. She used 1.3 grams of pepper while  
making pasta. How much pepper is left with her?

8) Use the following model to complete the division problem:  $\underline{\hspace{1cm}} \div$   
 $7 = 2.8$



9) Order the following decimal numbers from greatest to least.

85.947

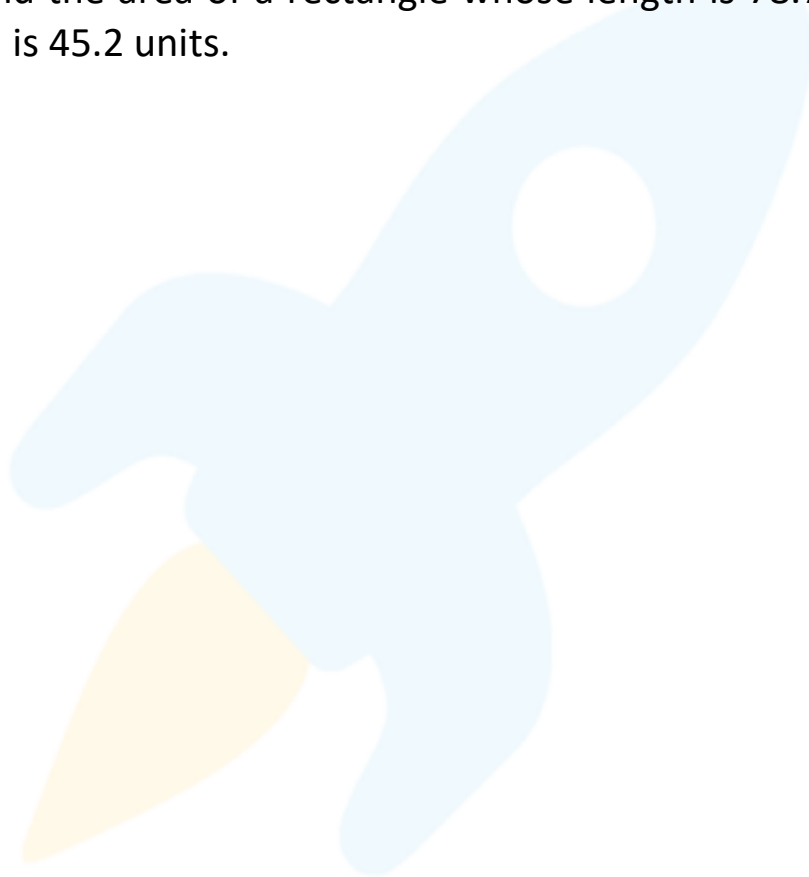
49.785

54.978

85.497

85.945

10) Find the area of a rectangle whose length is 78.73 units and breadth is 45.2 units.



When you learn math  
in an interesting way,  
you never forget.



**25 Million**

Math classes &  
counting

**100K+**

Students learning  
Math the right way

**20+ Countries**

Present across USA, UK,  
Singapore, India, UAE & more.

## Why choose Cuemath?

"Cuemath is a valuable addition to our family. We love solving puzzle cards. My daughter is now visualizing maths and solving problems effectively!"

- Gary Schwartz

"Cuemath is great because my son has a one-on-one interaction with the teacher. The instructor has developed his confidence and I can see progress in his work. One-on-one interaction is perfect and a great bonus."

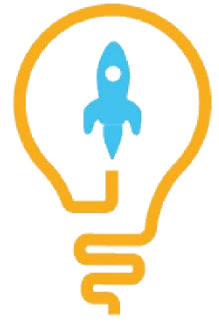
- Kirk Riley

"I appreciate the effort that miss Nitya puts in to help my daughter understand the best methods and to explain why she got a problem incorrect. She is extremely patient and generous with Miranda."

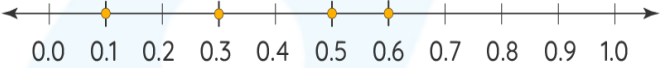
- Barbara Cabrera

Get the Cuemath advantage

**Book a FREE trial class**



## ANSWERS

1)	b) 0.60
2)	A = 0.8, B = 1.3, C = 2.2, D = 2.9
3)	a) 1.4, b) 476.8
4)	a) 0.75, 0.25, b) 0.5
5)	6.5 miles
6)	0.6 is nearest to 1 
7)	2.9 g
8)	19.6
9)	87.945, 85.947, 85.497, 54.978, 49.785
10)	3558.596 units <sup>2</sup>

## FUN FACT

1. The use of the modern decimal point was made a standard in England in 1619.
2. Not all decimal numbers can be converted to a fraction.
3. Every [fraction](#) is a decimal but every [decimal](#) is not a fraction.

