

Get better at Math.
Get better at
everything.



Come experience the Cuemath methodology and ensure your child stays ahead at math this summer.



**Adaptive
Platform**



**Interactive Visual
Simulations**



**Personalized
Attention**

For Grades 1 - 10



LIVE online classes
by trained and
certified experts.

Get the Cuemath advantage

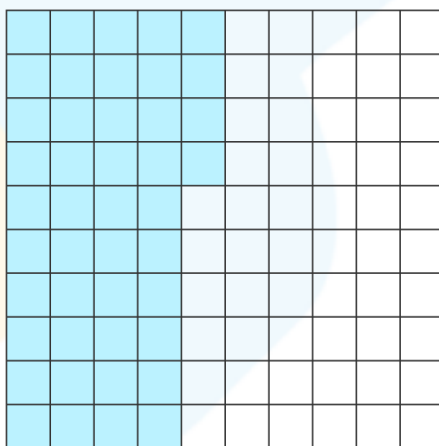
Book a FREE trial class

DECIMAL TO PERCENT WORKSHEET-IV

- 1) While performing a chemistry experiment Stella added 4.5 ml of acid to prepare a solution of 50ml. What is the percent concentration of the solution?



- 2) Write the decimal represented in the following model as a percentage.



- 3) Match the decimals in column 1 with their equivalent percentages in column 2.

Decimal	Percentage
a) 0.6	i) 6%
b) 6	ii) 60%
c) 0.06	iii) 600%

4) Express the following decimals as percentage.

a) 0.08

b) 0.8

5) Which of the following percentages is equal to 0.001?

a) 0.1%

b) 0.01%

c) 1%

d) 10%

6) Which decimal from the following list represents 115%?

11.5

115

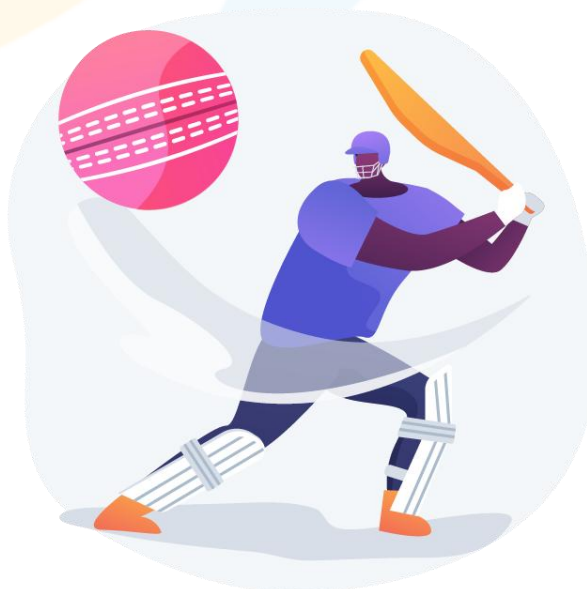
1.15

0.115

7) Fill in the blank:

To change a _____ to a _____ you multiply by 100.

8) The probability of Jack's team winning the cricket match is 0.75. Find the percentage probability that they will lose.



9) Rose bought a dress at a price \$75. Calculate the percentage discount is she was offered a discount of \$3.75.



10) State whether true or false:
The percentage equivalent of 1.25 is 125%.

When you learn math
in an interesting way,
you never forget.



25 Million

Math classes &
counting

100K+

Students learning
Math the right way

20+ Countries

Present across USA, UK,
Singapore, India, UAE & more.

Why choose Cuemath?

"Cuemath is a valuable addition to our family. We love solving puzzle cards. My daughter is now visualizing maths and solving problems effectively!"

- Gary Schwartz

"Cuemath is great because my son has a one-on-one interaction with the teacher. The instructor has developed his confidence and I can see progress in his work. One-on-one interaction is perfect and a great bonus."

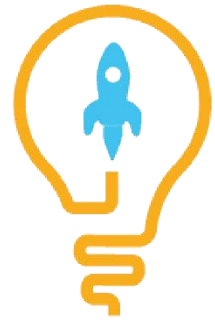
- Kirk Riley

"I appreciate the effort that miss Nitya puts in to help my daughter understand the best methods and to explain why she got a problem incorrect. She is extremely patient and generous with Miranda."

- Barbara Cabrera

Get the Cuemath advantage

Book a FREE trial class

**ANSWERS**

1)	9%
2)	44%
3)	a)-ii); b)--iii); c)--i)
4)	a) 8% b) 80%
5)	a)
6)	1.15
7)	Decimal; percent
8)	25%
9)	5%
10)	True

FUN FACT

1. Decimal numbers can be converted to a percentage by multiplication with 100.
2. We can represent [decimal](#) numbers using Base-10 blocks (flats, rods, and blocks). A flat represents one whole unit, a rod one-tenth of the whole, and a block one-hundredth of the whole.
3. All decimal numbers can be converted to a [fraction](#).

