

Get better at Math.  
Get better at  
everything.



Come experience the Cuemath methodology and ensure your child stays ahead at math this summer.



**Adaptive  
Platform**



**Interactive Visual  
Simulations**



**Personalized  
Attention**

For Grades 1 - 10



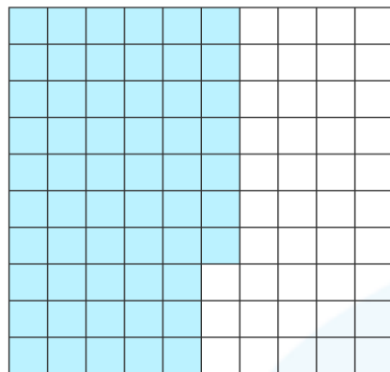
LIVE online classes  
by trained and  
certified experts.

Get the Cuemath advantage

**Book a FREE trial class**

## DECIMAL TO PERCENT WORKSHEET-III

- 1) Write the decimal represented in the following model as a percentage.



- 2) Match the decimals in column 1 with their equivalent percentages in column 2.

Decimal	Percentage
a) 0.632	i) 6320%
b) 6.32	ii) 63.2%
c) 63.2	iii) 632%

- 3) Express the following decimals as percentage.

- a) 2.08  
b) 0.07

- 4) Which of the following percentages is equal to 14.04?

- a) 140.4%  
b) 14.04%  
c) 0.1404%  
d) 1404%

- 5) Which decimal from the following list represents 15.5%?

0.155

1.55

15.5

0.0155

6) Fill in the blank:

To change a decimal to a percent you \_\_\_\_\_ by 100.

7) While painting her room, Jennifer adds 0.9 buckets of blue paint to prepare 10 buckets of emulsion paint of her choice. What percent of blue paint does the mixture have?



8) The probability of Jack's team winning the Rugby match is 0.3. Find the percentage probability that they will lose.



9) Rose bought a handbag from a mall. She was offered a discount of \$3.7 on a shopping of worth \$25. Calculate the percentage discount.



10) State whether true or false:  
The percentage equivalent of 0.25 is 2.5%.

When you learn math  
in an interesting way,  
you never forget.



**25 Million**

Math classes &  
counting

**100K+**

Students learning  
Math the right way

**20+ Countries**

Present across USA, UK,  
Singapore, India, UAE & more.

## Why choose Cuemath?

"Cuemath is a valuable addition to our family. We love solving puzzle cards. My daughter is now visualizing maths and solving problems effectively!"

- Gary Schwartz

"Cuemath is great because my son has a one-on-one interaction with the teacher. The instructor has developed his confidence and I can see progress in his work. One-on-one interaction is perfect and a great bonus."

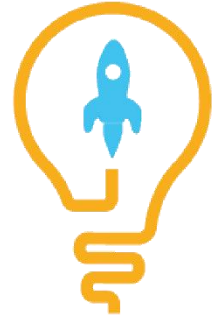
- Kirk Riley

"I appreciate the effort that miss Nitya puts in to help my daughter understand the best methods and to explain why she got a problem incorrect. She is extremely patient and generous with Miranda."

- Barbara Cabrera

Get the Cuemath advantage

**Book a FREE trial class**

**ANSWERS**

1)	57%
2)	a)-ii); b)--iii); c)--i)
3)	a) 208% b)7%
4)	d)
5)	0.155
6)	multiply
7)	9%
8)	70%
9)	14.8%
10)	False

## FUN FACT

1. Decimal numbers can be converted to a percentage by multiplication with 100.
2. All decimal numbers can be converted to a [fraction](#).
3. We can represent [decimal](#) numbers using Base-10 blocks (flats, rods, and blocks). A flat represents one whole unit, a rod one-tenth of the whole, and a block one-hundredth of the whole.

