

Get better at Math.
Get better at
everything.



Come experience the Cuemath methodology and ensure your child stays ahead at math this summer.



**Adaptive
Platform**



**Interactive Visual
Simulations**



**Personalized
Attention**

For Grades 1 - 10



LIVE online classes
by trained and
certified experts.

Get the Cuemath advantage

Book a FREE trial class

DECIMAL TO PERCENT WORKSHEET-I

1) Express the following decimals as percentage.

a) 0.07

b) 4.7

2) Which of the following percentages is equal to 0.75?

a) 7.5%

b) 75%

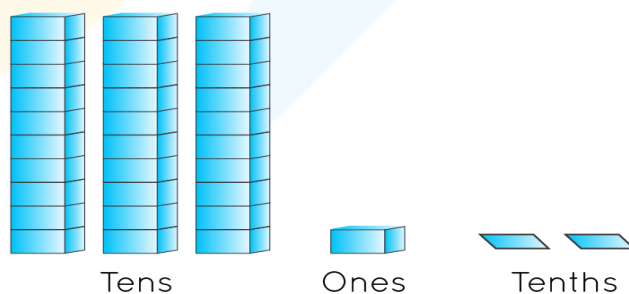
c) 750%

d) None of the above

3) Match the decimals in column 1 with their equivalent percentages in column 2.

Decimal	Percentage
a) 5.6	i) 5600%
b) 56	ii) 560%
c) 0.56	iii) 56%

4) Write the decimal represented in the following model as a percentage.



5) Which decimal from the following list represents 70%?

0.7

7.3

2.9

0.2

6) To change a decimal to a percent you _____.

- a) Multiply by 10
- b) Multiply by 100
- c) Divide by 10
- d) Divide by 100

7) Jennifer adds 0.06 gallon of chocolate syrup to prepare 0.1 gallon of chocolate smoothie. What percent of syrup concentrate is present in the smoothie?



8) The probability of Jack's team winning the Rugby match is 0.23. Find the percentage probability that they will win.



9) Katie was offered a discount of \$1.95 on a shopping of worth \$100. Calculate the percentage discount.



10) State whether true or false:
The percentage equivalent of 0.54 is 54%.

When you learn math
in an interesting way,
you never forget.



25 Million

Math classes &
counting

100K+

Students learning
Math the right way

20+ Countries

Present across USA, UK,
Singapore, India, UAE & more.

Why choose Cuemath?

"Cuemath is a valuable addition to our family. We love solving puzzle cards. My daughter is now visualizing maths and solving problems effectively!"

- Gary Schwartz

"Cuemath is great because my son has a one-on-one interaction with the teacher. The instructor has developed his confidence and I can see progress in his work. One-on-one interaction is perfect and a great bonus."

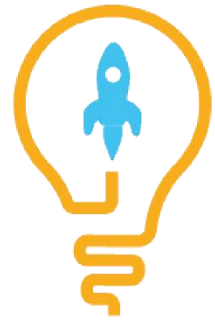
- Kirk Riley

"I appreciate the effort that miss Nitya puts in to help my daughter understand the best methods and to explain why she got a problem incorrect. She is extremely patient and generous with Miranda."

- Barbara Cabrera

Get the Cuemath advantage

Book a FREE trial class

**ANSWERS**

1)	a) 7% b) 470%
2)	b)
3)	a) --ii); b) --i); c) --iii)
4)	3120%
5)	0.7
6)	b)
7)	60%
8)	23%
9)	1.95%
10)	True

FUN FACT

1. We can represent [decimal](#) numbers using Base-10 blocks (flats, rods, and blocks). A flat represents one whole unit, a rod one-tenth of the whole, and a block one-hundredth of the whole.
2. All decimal numbers can be converted to a [fraction](#).
3. All decimal numbers can be converted to a percentage and vice-versa.

