

Get better at Math.
Get better at
everything.



Come experience the Cuemath methodology and ensure your child stays ahead at math this summer.



**Adaptive
Platform**



**Interactive Visual
Simulations**



**Personalized
Attention**

For Grades 1 - 10



LIVE online classes
by trained and
certified experts.

Get the Cuemath advantage

Book a FREE trial class

CONVERTING DECIMALS TO FRACTIONS WORKSHEET - 2

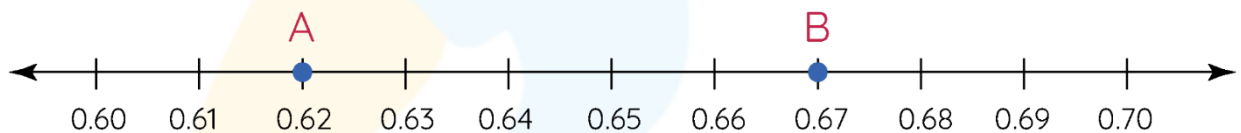
- 1) Write 0.8 as a fraction.
- 2) Match column 1 with correct sign in column 2.

a) $7.6 \text{ --- } \frac{19}{25}$	i) $<$
b) $\frac{144}{25} \text{ --- } 6.63$	ii) $=$
c) $7.45 \text{ --- } \frac{149}{20}$	iii) $>$

- 3) Fill in the blanks.

- a) The decimal number for $\frac{3}{5}$ is ____.
- b) The fraction representation of 1.2 is ____.

- 4) Write the fraction representation of the decimal numbers plotted by point A and B on the number line.

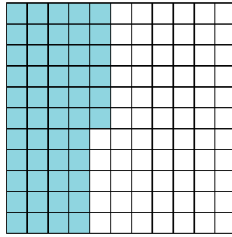


- 5) Which of the following statement(s) is/are true?

- a) $\frac{28}{5} = 0.56$
- b) $\frac{14}{25} < 0.056$
- c) $56.56 > 56.00$
- d) $0.56 = \frac{14}{25}$

- 6) Find the product of $\frac{3}{5}$ and 1.3. Write the answer in fraction.

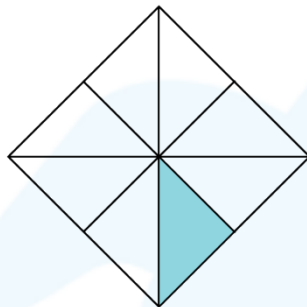
- 7) Write the decimal number represented by the grid below and write it in fraction form.



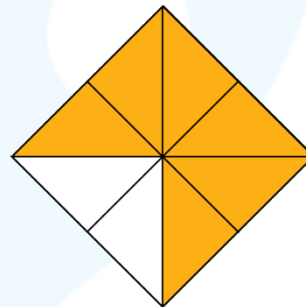
- 8) Write 7.03 as a mixed fraction.

- 9) Write the fraction for the decimal numbers represented below.

0.125



0.75



- 10) The side length of a square is 6.4 inches. What will be its area?
Give answer in decimal and fraction.

When you learn math
in an interesting way,
you never forget.



25 Million

Math classes &
counting

100K+

Students learning
Math the right way

20+ Countries

Present across USA, UK,
Singapore, India, UAE & more.

Why choose Cuemath?

"Cuemath is a valuable addition to our family. We love solving puzzle cards. My daughter is now visualizing maths and solving problems effectively!"

- Gary Schwartz

"Cuemath is great because my son has a one-on-one interaction with the teacher. The instructor has developed his confidence and I can see progress in his work. One-on-one interaction is perfect and a great bonus."

- Kirk Riley

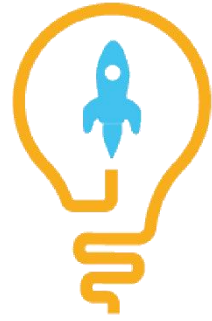
"I appreciate the effort that miss Nitya puts in to help my daughter understand the best methods and to explain why she got a problem incorrect. She is extremely patient and generous with Miranda."

- Barbara Cabrera

Get the Cuemath advantage

Book a FREE trial class

ANSWERS



1)	$\frac{4}{5}$
2)	a) - iii), b) - i), c) - ii)
3)	a) 0.6, b) $\frac{6}{5}$
4)	$0.62 = \frac{31}{50}$, $0.67 = \frac{67}{100}$
5)	c), d)
6)	$\frac{39}{50}$
7)	$0.45, \frac{9}{20}$
8)	$7\frac{3}{100}$
9)	$\frac{1}{8}, \frac{3}{4}$
10)	$40.96 \text{ inches}^2, \frac{1024}{25} \text{ inches}^2$

FUN FACT

1. The prefix "deci" in the word "DECIMAL" means ten.
2. We can write a fraction as a decimal number but we cannot write all [decimal numbers](#) as a fraction.
3. Like [fractions](#), every decimal number can be expressed in the form of a [percentage](#).

