

Get better at Math.
Get better at
everything.



Come experience the Cuemath methodology and ensure your child stays ahead at math this summer.



**Adaptive
Platform**



**Interactive Visual
Simulations**



**Personalized
Attention**

For Grades 1 - 10



LIVE online classes
by trained and
certified experts.

Get the Cuemath advantage

Book a FREE trial class

5th Grade Conversion Worksheets

1. Bianca ran for 1123 m. Find the distance covered by her in millimeter.



2. Carter bought a rope of length 1263 m, find the length of the rope in cm.
3. Fill in the blanks with the appropriate conversion:
98616 cm = ___ millimeter
4. Ronald is serving his friends 7 cups of punch. Find out how many milliliters of punch each cup carries if the total amount of punch is 1.4L.
5. Distance between the two cities is 719 km. Find the distance between the two cities in meters.

6. Aaron measured his weight and found it to be 72.94kg. He wants to know his weight in g. Can you help him in finding?

7. Fill in the blanks with the appropriate conversion:
___ g = 781 kg 926g

8. Fill in the blanks with the appropriate conversion:
 $26 \text{ kg} + 9227 \text{ g} + 9262 \text{ kg} = \text{___ g}$

9. Kyle wants to know which is greater, 560 kg or 560000g. Can you help him find out?



10. Jack wants to add 625 l with 2568 ml and 297 l. Find out the result in ml.

**When you learn math
in an interesting way,
you never forget.**



25 Million

Math classes &
counting

100K+

Students learning
Math the right way

20+ Countries

Present across USA, UK,
Singapore, India, UAE & more.

Why choose Cuemath?

"Cuemath is a valuable addition to our family. We love solving puzzle cards. My daughter is now visualizing maths and solving problems effectively!"

- Gary Schwartz

"Cuemath is great because my son has a one-on-one interaction with the teacher. The instructor has developed his confidence and I can see progress in his work. One-on-one interaction is perfect and a great bonus."

- Kirk Riley

"I appreciate the effort that miss Nitya puts in to help my daughter understand the best methods and to explain why she got a problem incorrect. She is extremely patient and generous with Miranda."

- Barbara Cabrera

Get the Cuemath advantage

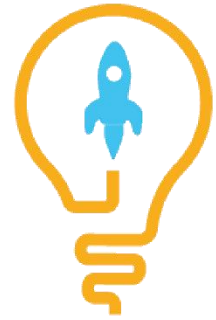
Book a FREE trial class

ANSWERS

1. 1123000 mm	2. 126300 cm
3. 120 mm	4. 200 milliliters
5. 719000 m	6. 72940 g
7. 781926 g	8. 9297227 g
9. 560 kg = 560000g.	10. 924568

SOLUTIONS

Complete solution/explanation



- Using, $1\text{m} = 1000\text{ mm}$
 $1123\text{ m} = 1123 \times 1000\text{ mm}$
 $\Rightarrow 1123\text{ m} = 1123000\text{ mm}$
- Using, $1\text{m} = 100\text{ cm}$
 $1263\text{ m} = 126300\text{ cm}$
- Using, $1\text{cm} = 10\text{ mm}$
 $98616\text{ cm} = 98616 \times 10\text{ mm}$
 $\Rightarrow 98616\text{ cm} = 986160\text{ mm}$
- Using, $1\text{L} = 1,000\text{ milliliters}$,
Multiply 1.4 liters by 1,000
We get, $1.4 \times 1,000 = 1400\text{ milliliters}$
He splits the punch evenly among 7 glasses.
Hence, $1400 \div 7 = 200$
Each cup carries 200 milliliters.
- Using, $1\text{km} = 1000\text{ m}$
 $719\text{ km} = 719 \times 1000\text{ m}$
 $\Rightarrow 719\text{ km} = 719000\text{ m}$
- Using, $1\text{kg} = 1000\text{ g}$
 $72.94\text{ kg} = 72.94 \times 1000\text{ g}$
 $\Rightarrow 72.94\text{ kg} = 72940\text{ g}$
- Using, $1\text{kg} = 1000\text{ g}$
 $781\text{ kg} = 781 \times 1000\text{ g}$
 $\Rightarrow 781\text{ kg} = 781000\text{ g}$
Now, $781\text{ kg } 926\text{ g} = 781000\text{g} + 926\text{g}$
 $781\text{ kg } 926\text{ g} = 781926\text{g}$

8. Using, $1\text{kg} = 1000\text{ g}$
 $26\text{ kg} = 26 \times 1000\text{ g}$
 $\Rightarrow 26\text{ kg} = 26000\text{ g}$
Similarly, $9262\text{ kg} = 9262000\text{ g}$
Now, $26\text{ kg} + 9227\text{ g} + 9262\text{ kg} = \underline{\hspace{2cm}}\text{ g}$
 $26\text{ kg} + 9227\text{ g} + 9262\text{ kg} = 26000\text{ g} + 9227\text{ g} + 9262000\text{ g}$
 $26\text{ kg} + 9227\text{ g} + 9262\text{ kg} = 9297227\text{ g}$

9. Using, $1\text{kg} = 1000\text{ g}$
 $560\text{ kg} = 560 \times 1000\text{ g}$
 $\Rightarrow 560\text{ kg} = 560000\text{ g}$
Clearly, 560000 g is equal to 560000 g .
Hence, $560\text{ kg} = 560000\text{g}$.

10. Using, $1\text{ l} = 1000\text{ ml}$
 $625\text{ l} = 625 \times 1000\text{ ml} = 625000\text{ ml}$
 $297\text{ l} = 297000\text{ ml}$
 $\Rightarrow 625\text{ l} + 2568\text{ ml} + 297\text{ l} = 625000 + 2568 + 297000$
 $\Rightarrow 625\text{ l} + 2568\text{ ml} + 297\text{ l} = 924568\text{ ml}$

FUN FACT

- 1) The word mile originates from the Latin term "mille passus," that means "a thousand paces."
- 2) Parsec is a unit used in astronomy to measure great distances between stars.
- 3) Do you know, the distance from Earth to moon is about 238,855 miles!

