

Get better at Math.
Get better at
everything.



Come experience the Cuemath methodology and ensure your child stays ahead at math this summer.



Adaptive Platform



Interactive Visual Simulations



Personalized Attention

For Grades 1 - 10



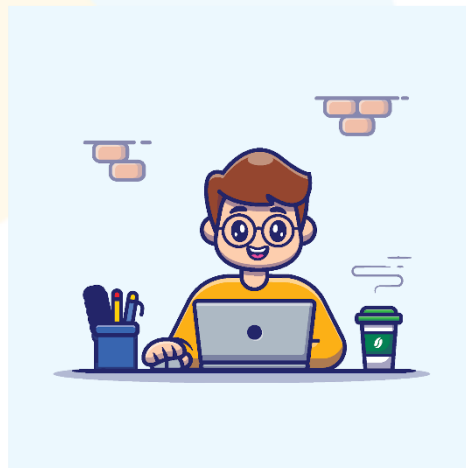
LIVE online classes
by trained and
certified experts.

Get the Cuemath advantage

Book a FREE trial class

5th Grade Conversion Worksheets

1. Barney bought 10 cups of cappuccino. Find out how many milliliters of coffee each cup carries if the total amount of cappuccino is 2 l.
2. Distance between the homes of two friends is 881 m. Calculate the distance in mm.
3. Tyler's teacher gave him a task to convert 906 m into cm. Can you help him do this?
4. Jordan measured length of his desk. It came out to be 691 cm, find the length of the desk in millimeters.



5. Jack travelled 801 kms in a week on his motorcycle. He wants to know the distance in meters.

6. Fill in the blanks with the appropriate conversion:

$$8219.4 \text{ kg} = _ _ \text{ g}$$

7. Danny weighed sack of rice and noted it as 82 kg and 9084g. How much is this weight in g?



8. Fill in the blanks with the appropriate conversion:

$$172 \text{ kg} + 290 \text{ g} + 819 \text{ kg} = _ _ _ \text{ g}$$

9. Trevor wants to know which is greater, 92 kg or 90000g. Can you help him find out?

10. Fill in the blanks with the appropriate conversion:

$$92 \text{ l} + 892 \text{ ml} + 597 \text{ l} = _ _ _ \text{ ml}$$

**When you learn math
in an interesting way,
you never forget.**



25 Million

Math classes &
counting

100K+

Students learning
Math the right way

20+ Countries

Present across USA, UK,
Singapore, India, UAE & more.

Why choose Cuemath?

"Cuemath is a valuable addition to our family. We love solving puzzle cards. My daughter is now visualizing maths and solving problems effectively!"

- Gary Schwartz

"Cuemath is great because my son has a one-on-one interaction with the teacher. The instructor has developed his confidence and I can see progress in his work. One-on-one interaction is perfect and a great bonus."

- Kirk Riley

"I appreciate the effort that miss Nitya puts in to help my daughter understand the best methods and to explain why she got a problem incorrect. She is extremely patient and generous with Miranda."

- Barbara Cabrera

Get the Cuemath advantage

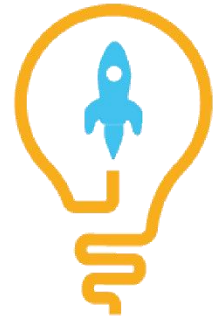
Book a FREE trial class

ANSWERS

1. 200 milliliters	2. 881000 mm
3. 90600 cm	4. 691 mm
5. 801000 m	6. 8219400 g
7. 17084g	8. 991290 g
9. $92 \text{ kg} > 90000\text{g}$	10. 689892ml

SOLUTIONS

Complete solution/explanation



1. Using, $1\text{L} = 1,000$ milliliters,
Multiply 2 liters by 1,000
We get, $2 \times 1,000 = 2000$ milliliters
He splits the punch evenly among 4 glasses.
Hence, $2000 \div 4 = 500$
Each cup carries 500 milliliters.
2. Using, $1\text{m} = 1000$ mm
 $881 \text{ m} = 881 \times 1000 \text{ mm}$
 $\Rightarrow 881 \text{ m} = 881000 \text{ mm}$
3. Using, $1\text{m} = 100$ cm
 $906 \text{ m} = 906 \times 100 \text{ cm}$
 $\Rightarrow 906 \text{ m} = 90600 \text{ cm}$
4. Using, $1\text{cm} = 10$ mm
 $691 \text{ cm} = 691 \times 10 \text{ mm}$
 $\Rightarrow 691 \text{ cm} = 6910 \text{ mm}$
5. Using, $1\text{km} = 1000$ m
 $801 \text{ km} = 801 \times 1000 \text{ m}$
 $\Rightarrow 801 \text{ km} = 801000 \text{ m}$

6. Using, $1\text{kg} = 1000\text{ g}$

$$8219.4\text{ kg} = 8219.4 \times 1000\text{ g}$$

$$\Rightarrow 8219.4\text{ kg} = 8219400\text{ g}$$

7. Using, $1\text{kg} = 1000\text{ g}$

$$82\text{ kg} = 82 \times 1000\text{ g}$$

$$\Rightarrow 82\text{ kg} = 82000\text{ g}$$

$$\text{Now, } 82\text{ kg } 9084\text{ g} = 80000\text{g} + 9084\text{g}$$

$$82\text{ kg } 9084\text{ g} = 17084\text{g}$$

8. Using, $1\text{kg} = 1000\text{ g}$

$$172\text{ kg} = 172 \times 1000\text{ g}$$

$$\Rightarrow 172\text{ kg} = 172000\text{ g}$$

$$\text{Similarly, } 819\text{ kg} = 819000\text{ g}$$

$$\text{Now, } 172\text{ kg} + 290\text{ g} + 819\text{ kg} = \text{--- g}$$

$$172\text{ kg} + 290\text{ g} + 819\text{ kg} = 172000\text{ g} + 290\text{ g} + 819000\text{ g}$$

$$172\text{ kg} + 290\text{ g} + 819\text{ kg} = 991290\text{ g}$$

9. Using, $1\text{kg} = 1000\text{ g}$

$$92\text{ kg} = 92 \times 1000\text{ g}$$

$$\Rightarrow 92\text{ kg} = 92000\text{ g}$$

Clearly, 92000 g is greater than 90000 g .

Hence, $92\text{ kg} > 90000\text{g}$.

10. Using, $1\text{l} = 1000\text{ ml}$

$$92\text{ l} = 92 \times 1000\text{ ml} = 92000\text{ ml}$$

$$597\text{ l} = 597000\text{ ml}$$

$$\Rightarrow 92\text{ l} + 892\text{ ml} + 597\text{ l} = 92000 + 892 + 597000$$

$$\Rightarrow 92\text{ l} + 892\text{ ml} + 597\text{ l} = 689892\text{ ml}$$

FUN FACT

- 1) A ship's speed is measured in knots, 1 knot equals 1 nautical mile per hour.
- 2) Mass of an object remains same whereas its weight would vary depending upon the location.
- 3) "Nybble" is a very small unit of information that can be stored on a computer

