

Get better at Math.
Get better at
everything.



Come experience the Cuemath methodology and ensure your child stays ahead at math this summer.



**Adaptive
Platform**



**Interactive Visual
Simulations**



**Personalized
Attention**

For Grades 1 - 10



LIVE online classes
by trained and
certified experts.

Get the Cuemath advantage

Book a FREE trial class

5th Grade Conversion Worksheets

1. Yan wants to know which is greater, 8 kg or 80000g. Can you help him find out?
2. Wyatt came to know that height of the mountain near to his home, is 3,876 m. What will be the height of the mountain in cm?
3. Height of a bird cage is 654 cm. Find the height in millimeters?



4. Adrian sold 14 cups of brew in 30 minutes. Find out how many milliliters of brew each cup carries if the total amount of brew is 2.8l.
5. Fill in the blanks with the appropriate conversion:
454 km = __ m
6. Owen's weight is 94 kg in Earth, and his weight in moon is 83.2 kg. Find his weight on moon in grams.

7. Fill in the blanks with the appropriate conversion:

$$\underline{\quad} \text{ g} = 8 \text{ kg } 82\text{g}$$

8. What will be the sum of the weights 7 kg, 20 g, and 92 kg in grams?

9. Katherine bought a fish tank of length 6.2 m. What is the length of the wire in millimeters?



10. Fill in the blanks with the appropriate conversion:

$$82 \text{ l} + 92 \text{ ml} + 957 \text{ l} = \underline{\quad} \text{ ml}$$

**When you learn math
in an interesting way,
you never forget.**



25 Million

Math classes &
counting

100K+

Students learning
Math the right way

20+ Countries

Present across USA, UK,
Singapore, India, UAE & more.

Why choose Cuemath?

"Cuemath is a valuable addition to our family. We love solving puzzle cards. My daughter is now visualizing maths and solving problems effectively!"

- Gary Schwartz

"Cuemath is great because my son has a one-on-one interaction with the teacher. The instructor has developed his confidence and I can see progress in his work. One-on-one interaction is perfect and a great bonus."

- Kirk Riley

"I appreciate the effort that miss Nitya puts in to help my daughter understand the best methods and to explain why she got a problem incorrect. She is extremely patient and generous with Miranda."

- Barbara Cabrera

Get the Cuemath advantage

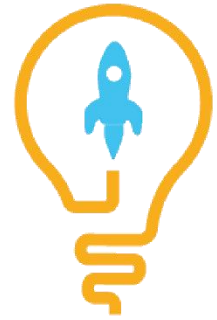
Book a FREE trial class

ANSWERS

1. $8 \text{ kg} < 80000\text{g}$	2. $387,600 \text{ cm}$
3. 654 mm	4. 200 milliliters
5. 454000 m	6. 83200 g
7. 8082	8. 99020
9. 6200 mm	10. 1039092 ml

SOLUTIONS

Complete solution/explanation



1. Using, $1\text{kg} = 1000\text{ g}$
 $8\text{ kg} = 8 \times 1000\text{ g}$
 $\Rightarrow 8\text{ kg} = 8000\text{ g}$
Clearly, 8000 g is lesser than 80000 g .
Hence, $8\text{ kg} < 80000\text{g}$.
2. Using, $1\text{m} = 100\text{ cm}$
 $3,876\text{ m} = 3,876 \times 100\text{ cm}$
 $\Rightarrow 3876\text{ m} = 387,600\text{ cm}$
3. Using, $1\text{cm} = 10\text{ mm}$
 $654\text{ cm} = 654 \times 10\text{ mm}$
 $\Rightarrow 654\text{ cm} = 6540\text{ mm}$
4. Using, $1\text{L} = 1,000\text{ milliliters}$,
Multiply 2.8 liters by $1,000$
We get, $2.8 \times 1,000 = 2800\text{ milliliters}$
He splits the punch evenly among 4 glasses.
Hence, $2800 \div 4 = 700$
Each cup carries 700 milliliters.
5. Using, $1\text{km} = 1000\text{ m}$
 $454\text{ km} = 454 \times 1000\text{ m}$
 $\Rightarrow 454\text{ km} = 454000\text{ m}$

6. Using, $1\text{kg} = 1000\text{ g}$

$$83.2\text{ kg} = 83.2 \times 1000\text{ g}$$

$$\Rightarrow 83.2\text{ kg} = 83200\text{ g}$$

7. Using, $1\text{kg} = 1000\text{ g}$

$$8\text{ kg} = 2 \times 1000\text{ g}$$

$$\Rightarrow 8\text{ kg} = 8000\text{ g}$$

$$\text{Now, } 8\text{ kg } 82\text{ g} = 8000\text{g} + 82\text{g}$$

$$8\text{ kg } 82\text{ g} = 8082\text{g}$$

8. Using, $1\text{kg} = 1000\text{ g}$

$$7\text{ kg} = 7 \times 1000\text{ g}$$

$$\Rightarrow 7\text{ kg} = 7000\text{ g}$$

$$\text{Similarly, } 92\text{ kg} = 92000\text{ g}$$

$$\text{Now, } 7\text{ kg} + 20\text{ g} + 92\text{ kg} = \underline{\quad\quad} \text{ g}$$

$$7\text{ kg} + 20\text{ g} + 92\text{ kg} = 7000\text{ g} + 20\text{ g} + 92000\text{ g}$$

$$7\text{ kg} + 20\text{ g} + 92\text{ kg} = 99020\text{ g}$$

9. Using, $1\text{m} = 1000\text{ mm}$

$$6.2\text{ m} = 6.2 \times 1000\text{ mm}$$

$$\Rightarrow 6.2\text{ m} = 6200\text{ mm}$$

10. Using, $1\text{l} = 1000\text{ ml}$

$$82\text{ l} = 82 \times 1000\text{ ml} = 82000\text{ ml}$$

$$957\text{ l} = 957000\text{ ml}$$

$$\Rightarrow 82\text{ l} + 92\text{ ml} + 957\text{ l} = 82000 + 92 + 957000$$

$$\Rightarrow 82\text{ l} + 92\text{ ml} + 957\text{ l} = 1039092\text{ ml}$$

FUN FACT

- 1) The word mile originates from the Latin term "mille passus," that means "a thousand paces."
- 2) A boat length is a length of 62 feet, used in judging rowing races.
- 3) A scoville is the measure of the hotness of a chili pepper

