

Get better at Math.
Get better at
everything.



Come experience the Cuemath methodology and ensure your child stays ahead at math this summer.



**Adaptive
Platform**



**Interactive Visual
Simulations**



**Personalized
Attention**

For Grades 1 - 10



LIVE online classes
by trained and
certified experts.

Get the Cuemath advantage




Book a FREE trial class

Worksheet-2 on Comparing Numbers 4th grade

Q1) Match column 1 with the correct symbols in column 2.

a) $92 \underline{\hspace{1cm}} 71$	i) $<$
b) $80 \underline{\hspace{1cm}} 60 + 20$	ii) $>$
c) $3 \underline{\hspace{1cm}} 100$	iii) $=$

Q2) Which of the following groups has more number of animals?

- a. 
- b. 
- c. 

Q3) Order the numbers from least to greatest.

14, 28, 22, 31, 75, 10, 5

Q4) The following image shows the stars in different colors: red, yellow, orange, green, pink and purple. Select the color with least number of stars.



- a) Red
- b) Yellow
- c) Orange
- d) Green
- e) Pink
- f) Purple

Q5) If $45 > 39$, then which of the following statement(s) is/are true?

- a) 45 is equal to 39
- b) 45 is greater than 39
- c) 45 is less than 39
- d) 39 is less than 45

Q6) Select the greatest number from the following options.

- a) 143
- b) 611
- c) 272
- d) 300

Q7) Select the correct option.

- a) $5 \times 2 < 4 \times 3$
- b) $166 - 150 > 196 - 150$
- c) $0 = 0$
- d) $90 > 100$

Q8) Fill in the blanks with greater than, less than or equal to.

- a) Six thousand four hundred eleven is _____ nine thousand five hundred twenty.
- b) Three hundred is _____ 300.
- c) Five hundred eighty-two is _____ two hundred ninety six.

Q9) Fill in the blanks with the appropriate signs $>$, $<$ or $=$

a) 712 ___ 862

b) Three hundred twenty ___ Five hundred Twelve

Q10) By which color the pie is shaded the most?



When you learn math
in an interesting way,
you never forget.



25 Million

Math classes &
counting

100K+

Students learning
Math the right way

20+ Countries

Present across USA, UK,
Singapore, India, UAE & more.

Why choose Cuemath?

"Cuemath is a valuable addition to our family. We love solving puzzle cards. My daughter is now visualizing maths and solving problems effectively!"

- Gary Schwartz

"Cuemath is great because my son has a one-on-one interaction with the teacher. The instructor has developed his confidence and I can see progress in his work. One-on-one interaction is perfect and a great bonus."

- Kirk Riley

"I appreciate the effort that miss Nitya puts in to help my daughter understand the best methods and to explain why she got a problem incorrect. She is extremely patient and generous with Miranda."

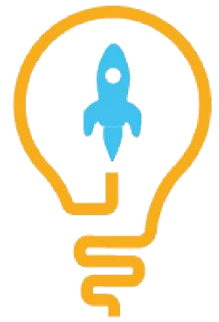
- Barbara Cabrera

Get the Cuemath advantage

Book a FREE trial class

ANSWERS

1) a) - ii) b) - iii) c) - i)	2) b)	3) 50, 100, 140, 220, 280, 310, 750
4) c) Orange	5) b), d)	6) b) 611
7) a), c)	8) a) less than b) equal to c) greater than	9) a) $712 < 862$ b) $320 > 512$
10) yellow		



SOLUTIONS

Complete solution/explanation

Q1) Match column 1 with the correct symbols in column 2.

Solution:

In part a) Among the numbers 92 and 71, the number 92 is greater than the number 71. So the correct answer is "ii) $>$ ".

In part b) When 20 is added to 60 then the answer is 80. So the correct answer is "iii) $=$ ".

In part c) Among the numbers 3 and 100, the number 3 is less than the number 100. So the correct answer is "i) $<$ ".

Q2) Which of the following groups has more number of animals?

Solution:

In part a), there are 2 lions, in part b) there are 7 owls and in part c), there are 4 rabbits.

Among 2, 7 and 4, the number 7 is the greatest. So, the correct option is b)

Q3) Order the numbers from least to greatest.

Solution:

The correct order from least to greatest is 50, 100, 140, 220, 280, 310, 750

Q4) The following image shows the stars in different colors: red, yellow, orange, green, pink and purple. Select the color with least number of stars.

Solution:

In the given image there are 4 red stars, 2 yellow stars, 1 orange star, 2 green stars, 2 pink stars and 4 purple stars. So, the orange star is least in number. So, the correct option is c)

Q5) If $45 > 39$, then which of the following statement(s) is/are true?

Solution:

If $45 > 39$, then this means 39 is less than 45 or 45 is greater than 39. So, the correct options are b) and d)

Q6) Select the greatest number from the following options.

Solution:

The greatest number from 143, 611, 272 and 300 is 611. Therefore, option b) is the correct option.

Q7) Select the correct option.

Solution:

In part a), $5 \times 2 = 10$ and $4 \times 3 = 12$. Among the numbers 10 and 12, $10 < 12$. So this option is correct.

In part b), $166 - 150 = 16$ and $196 - 150 = 46$. Among the numbers 16 and 19, $16 < 19$. So this option is incorrect.

In part c), The number 0 is always equal to itself. So this option is correct.

In part d), Among the numbers 90 and 100, $90 < 100$. So this option is incorrect.

Q8) Fill in the blanks with greater than, less than or equal to.

Solution:

In part a) Among the numbers 6411 and 9520, the number 6411 is less than the number 9520. So, the correct answer is "less than".

In part b) Three is written as 3 in number. So, the correct answer is "equal to".

In part c) Among 582 and 296, 582 is greater than 296. So, the correct answer is "greater than".

Q9) Fill in the blanks with the appropriate signs $>$, $<$ or $=$

Solution:

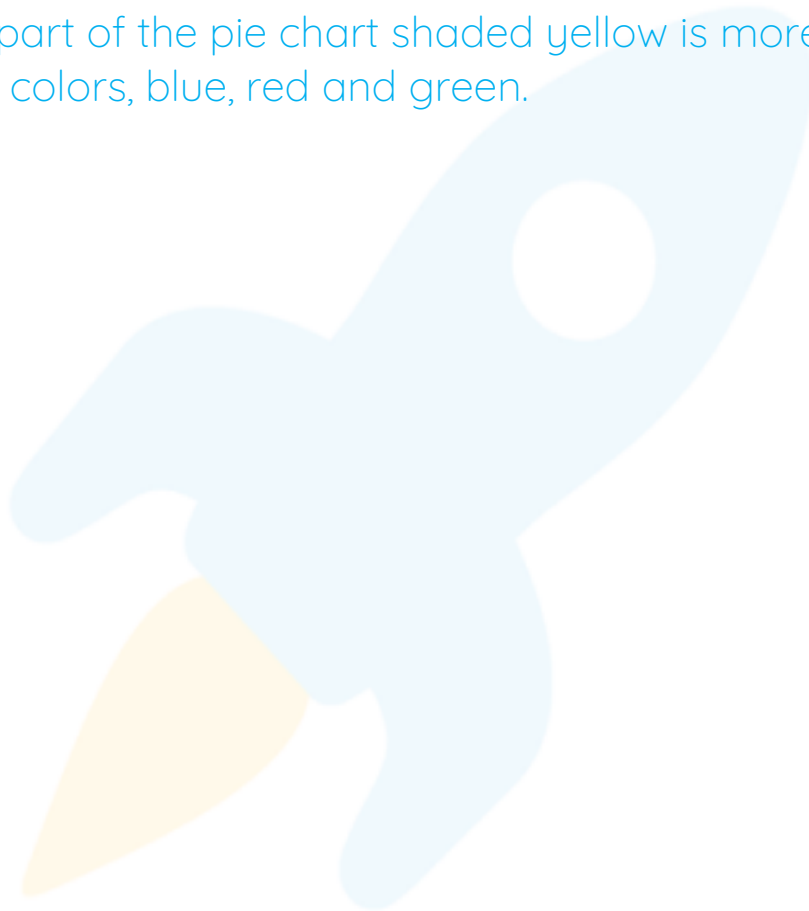
a) $712 < 862$

b) $320 > 512$

Q10) By which color the pie is shaded the most?

Solution:

Clearly, the part of the pie chart shaded yellow is more than the rest of the 3 colors, blue, red and green.



FUN FACT

1. One of the easiest ways to remember the "greater than" and "less than" signs is to imagine them as hungry alligators that always eat the larger number. Hence, the wide-open side of the sign faces the larger number.
2. Another way to memorise them is to observe that the sign " $<$ " looks similar to the alphabet "L".
3. Do you know you can imagine these comparing symbols as the alligator's mouth? Remember that the wide-open side of the alligator faces the larger number.

