

Get better at Math.
Get better at
everything.



Come experience the Cuemath methodology and ensure your child stays ahead at math this summer.



**Adaptive
Platform**



**Interactive Visual
Simulations**



**Personalized
Attention**

For Grades 1 - 10



LIVE online classes
by trained and
certified experts.

Get the Cuemath advantage

Book a FREE trial class

Worksheet-4 on Comparing Decimal 5th grade

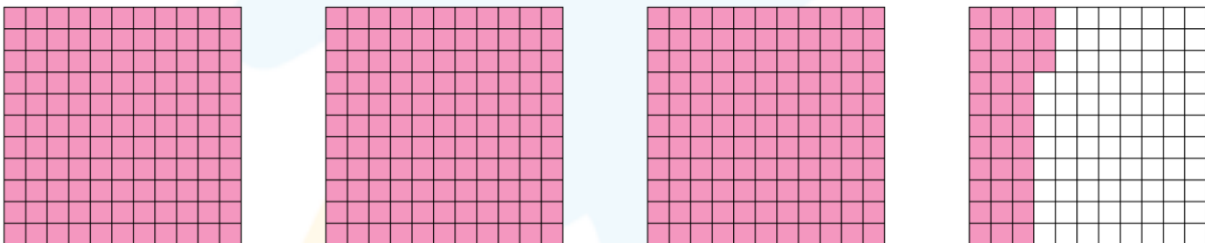
Q1) Which of the following statement(s) is/are true?

- a) $9.2 = 0.92$
- b) $0.92 = 0.920$
- c) $0.92 = 0.092$
- d) $9.20 = 9.2$

Q2) Choose a decimal number greater than 4.53 and less than 4.54

Q3) Zia bought 3.2 kilograms of apples and 4.7 kilograms of oranges. Which fruit she bought the more in quantity?

Q4) Which decimal number is greater than the one shown in the grid given below.



- a) 3.1
- b) 3.2
- c) 3.3
- d) 3.4

Q5) Put the following decimal numbers in order from least to greatest.

0.22, 2.2, 2.02, 0.02, 0.002

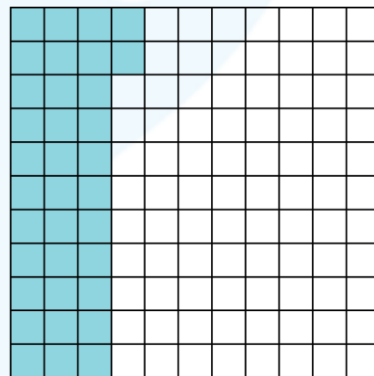
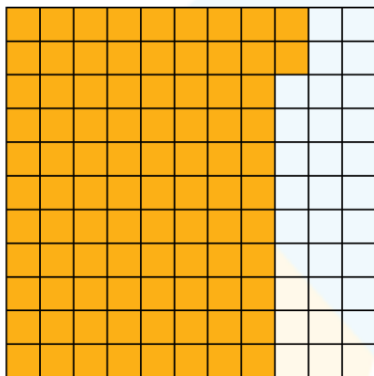
Q6) Fill the appropriate signs: $>$, $<$ or $=$ to make the statements true.

- a) $54.96 \underline{\quad} 13.56 + 23.74$
- b) $23.54 \underline{\quad} 12.52 \times 5.5$
- c) $56.73 - 24.89 \underline{\quad} 19.58 + 12.26$

Q7) Which decimal number is equivalent to 9.8?

- a) 9.80
- b) 0.98
- c) 98.0

Q8) Look at the two decimal numbers illustrated using a grid and write the decimal number that is least.



Q9) Choose the greatest decimal number for each option.

- a) 89.32 or 89.032
- b) 0.32 or 0.332

Q10) Nadia has two cats, Jiffy and Miffy. Jiffy weighs 8.7 pounds whereas Miffy weighs 8.9 pounds. Whose weight is more?

**When you learn math
in an interesting way,
you never forget.**



25 Million

Math classes &
counting

100K+

Students learning
Math the right way

20+ Countries

Present across USA, UK,
Singapore, India, UAE & more.

Why choose Cuemath?

"Cuemath is a valuable addition to our family. We love solving puzzle cards. My daughter is now visualizing maths and solving problems effectively!"

- Gary Schwartz

"Cuemath is great because my son has a one-on-one interaction with the teacher. The instructor has developed his confidence and I can see progress in his work. One-on-one interaction is perfect and a great bonus."

- Kirk Riley

"I appreciate the effort that miss Nitya puts in to help my daughter understand the best methods and to explain why she got a problem incorrect. She is extremely patient and generous with Miranda."

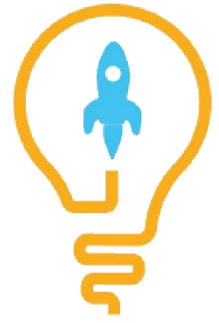
- Barbara Cabrera

Get the Cuemath advantage

Book a FREE trial class

ANSWERS

1) b), d)	2) 4.538
3) Orange	4) d) 3.4
5) 0.002, 0.02, 0.22, 2.02, 2.2	6) a) > b) < c) =
7) a) 9.80	8) 0.32
9) a) 89.32 b) 0.332	10) Miffy

**SOLUTIONS**

Complete solution/explanation

Sol 1: b) $0.92 = 0.920$ d) $9.20 = 9.2$

Sol 2: 4.538

Sol 3: Orange

Sol 4: d) 3.4

Sol 5: 0.002, 0.02, 0.22, 2.02, 2.2

Sol 6: a) $13.56 + 23.74 = 37.3$ $54.96 > 13.56 + 23.74$ b) $12.52 \times 5.5 = 68.86$ $23.54 < 12.52 \times 5.5$ c) $43.89 - 23.81 = 20.08$ $19.67 + 0.41 = 20.08$

Sol 7: a) 9.80

Sol 8: The first shows the decimal number 0.72 and the second grid shows the decimal number 0.32

So, the second grid shows the least decimal number.

Sol 9: a) 89.32 b) 0.332

Sol 10: Miffy

FUN FACT

1. Every fraction with denominator of powers of 10 can be written as a decimal notation.
2. The place value of digits gets multiplied by 10, as we move towards left from the decimal point.
3. The place value of digits gets divided by 10, as we move towards right from the decimal point.

