

Get better at Math.
Get better at
everything.



Come experience the Cuemath methodology and ensure your child stays ahead at math this summer.



**Adaptive
Platform**



**Interactive Visual
Simulations**



**Personalized
Attention**

For Grades 1 - 10



LIVE online classes
by trained and
certified experts.

Get the Cuemath advantage

Book a FREE trial class

Worksheet-2 on Comparing Decimal 5th grade

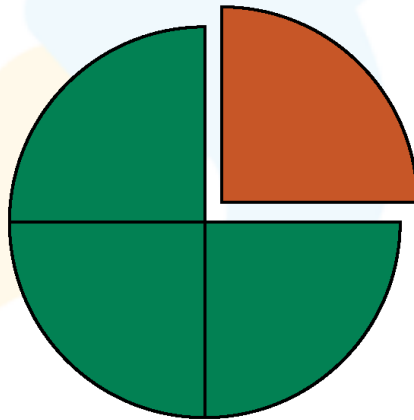
Q1) Match column 1 with correct sign in column 2.

a) 7.6×2 __ $0.76 \div 2$	i) =
b) $5.76 + 3.1$ __ $4.43 + 4.43$	ii) <
c) $7.45 - 0.55$ __ 2.12×4	iii) >

Q2) Jack and Jolly each have a ribbon with lengths 8.94 inches and 8.99 inches respectively. Who has the longest ribbon?

Q3) The following pie chart is shaded with two colors: green and orange.

- Write the decimal representation for each part.
- Which color shows the least part?



Q4) Choose a decimal number greater than 0.66 and less than 0.71

- a) 0.6 b) 0.7 c) 0.06 d) 0.071

Q5) Order the following decimal numbers from greatest to least.
19.65, 67.54, 32.73, 67.51, 85.41

Q6) Put the signs: $>$, $<$ or $=$ to make the following statements true.

a) $7.22 + 7.02$ ___ $7.72 - 7.2$

b) $4.4 - 4.0$ ___ 0.44

Q7) State which of the following statement(s) is/are correct.

a) $45 \div 100 < 4.5 \div 10$

b) $4.5 \div 10 = 45 \div 100$

c) $0.45 \times 10 > 4.5 \div 100$

d) $45 \times 0.1 = 4.5 \div 0.1$

Q8) Which one of the following numbers is nearest to 1.5
1.4, 1.6, 1.69, 1.59, 1.49

Q9) Which of the following decimal numbers is more than 2.35?

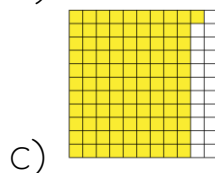
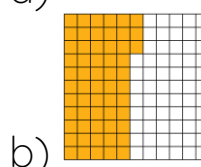
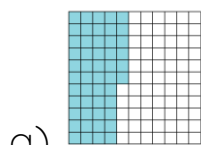
a) 2.3

b) 2.5

c) 23.5

d) 0.235

Q10) Which among the following shows the greatest decimal number.



**When you learn math
in an interesting way,
you never forget.**



25 Million

Math classes &
counting

100K+

Students learning
Math the right way

20+ Countries

Present across USA, UK,
Singapore, India, UAE & more.

Why choose Cuemath?

"Cuemath is a valuable addition to our family. We love solving puzzle cards. My daughter is now visualizing maths and solving problems effectively!"

- Gary Schwartz

"Cuemath is great because my son has a one-on-one interaction with the teacher. The instructor has developed his confidence and I can see progress in his work. One-on-one interaction is perfect and a great bonus."

- Kirk Riley

"I appreciate the effort that miss Nitya puts in to help my daughter understand the best methods and to explain why she got a problem incorrect. She is extremely patient and generous with Miranda."

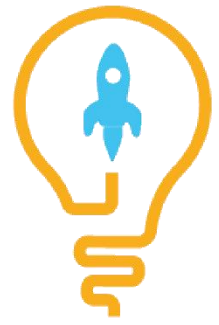
- Barbara Cabrera

Get the Cuemath advantage

Book a FREE trial class

ANSWERS

1) a) - iii), b) - i), c) - ii)	2) Jolly
3) a) 0.75, 0.25 b) Orange	4) b) 0.7
5) 85.41, 67.54, 67.51, 32.73, 19.65	6) a) > b) <
7) b), c)	8) 1.49
9) b), c)	10) c)

**SOLUTIONS**

Complete solution/explanation

Sol 1: a) - iii), b) - i), c) - ii)

Sol 2: Jolly

Sol 3: a) Part shaded in green = 0.75
Part shaded in orange = 0.25
b) Orange shaded part is the least.

Sol 4: b) 0.7

Sol 5: 85.41, 67.54, 67.51, 32.73, 19.65

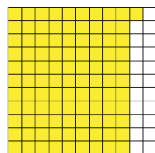
Sol 6: a) $7.22 + 7.02 = 14.24$, $7.72 - 7.2 = 0.52$
 $7.22 + 7.02 > 7.72 - 7.2$
b) $4.4 - 4.0 = 0.4$
 $4.4 - 4.0 < 0.44$

Sol 7: b) $4.5 \div 10 = 45 \div 100$ c) $0.45 \times 10 > 4.5 \div 100$

Sol 8: 1.49

Sol 9: b) 2.5 c) 23.5

Sol 10: c)



FUN FACT

1. The prefix "deci" in the word "DECIMAL" means ten.
2. We can write a fraction as a decimal number but we cannot write all decimal numbers as a fraction.
3. Like fractions, every decimal number can be expressed in the form of a percentage.

