

Get better at Math.
Get better at
everything.



Come experience the Cuemath methodology and ensure your child stays ahead at math this summer.



**Adaptive
Platform**



**Interactive Visual
Simulations**



**Personalized
Attention**

For Grades 1 - 10



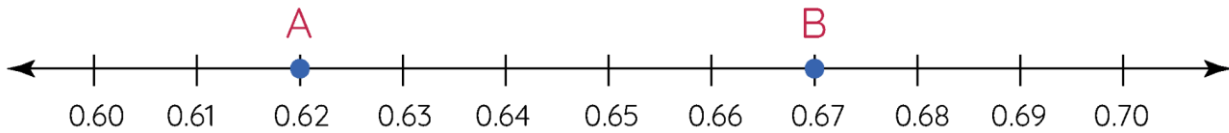
LIVE online classes
by trained and
certified experts.

Get the Cuemath advantage

Book a FREE trial class

Worksheet-1 on Comparing Decimal 5th grade

Q1) Two points A and B are marked on a number line as shown below. Which point is greater?



Q2) Which of the following statement(s) is/are true?

- a) $5.6 = 0.56$
- b) $0.56 < 0.056$
- c) $56.56 > 56.00$
- d) $0.56 = 0.56$

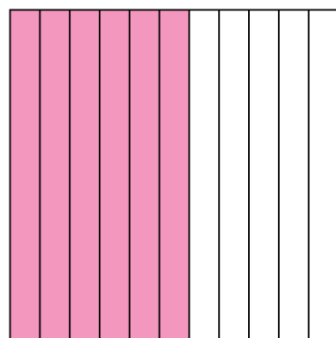
Q3) Plot the decimal numbers shown below on a number line and write the number nearest to 1.

0.6, 0.4, 0.8, 0.2

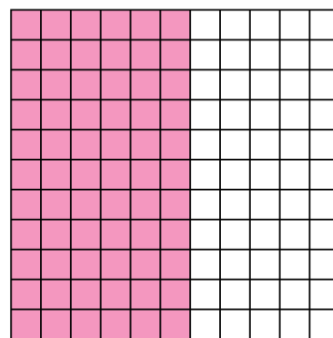
Q4) Choose the greatest decimal number from the options given below.

- a) 0.01
- b) 0.1
- c) 1.001
- d) 1.1

Q5) Look at the model shown below and compare the decimal numbers represented by the models.



0.6



0.60

Q6) Order the following decimal numbers from least to greatest.

56.43, 89.23, 65.98, 14.67, 34.73

Q7) Put the signs: $>$, $<$ or $=$ to compare the decimal numbers.

a) $0.22 _ 0.2$

b) $6.33 _ 6.333$

Q8) Milie travels 7.5 miles by bus, 4.2 miles by her car and 2 miles by cycling. Which mode of transport covers most of the distance traveled?

Q9) Which of the following decimal numbers is less than 0.07?

a) 0.7

b) 0.007

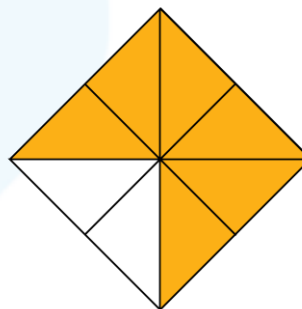
c) 7.0

Q10) Compare the decimal numbers 0.125 and 0.75 using the models shown below.

0.125



0.75



**When you learn math
in an interesting way,
you never forget.**



25 Million

Math classes &
counting

100K+

Students learning
Math the right way

20+ Countries

Present across USA, UK,
Singapore, India, UAE & more.

Why choose Cuemath?

"Cuemath is a valuable addition to our family. We love solving puzzle cards. My daughter is now visualizing maths and solving problems effectively!"

- Gary Schwartz

"Cuemath is great because my son has a one-on-one interaction with the teacher. The instructor has developed his confidence and I can see progress in his work. One-on-one interaction is perfect and a great bonus."

- Kirk Riley

"I appreciate the effort that miss Nitya puts in to help my daughter understand the best methods and to explain why she got a problem incorrect. She is extremely patient and generous with Miranda."

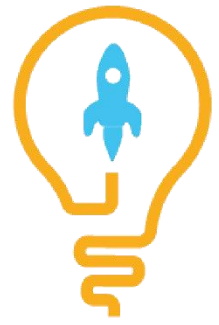
- Barbara Cabrera

Get the Cuemath advantage

Book a FREE trial class

ANSWERS

1) B	2) c), d)
3) 0.8	4) d) 1.1
5) $0.6 = 0.60$	6) 14.67, 34.73, 56.43, 65.98, 89.23
7) a) > b) <	8) Bus
9) b) 0.07	10) $0.125 < 0.75$

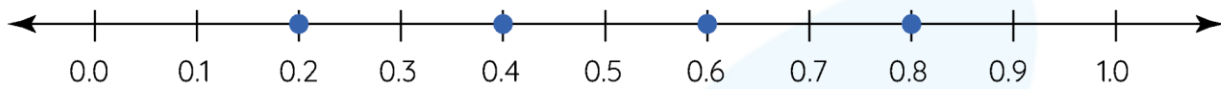
**SOLUTIONS**

Complete solution/explanation

Sol 1: B

Sol 2: c) $56.56 > 56.00$ d) $0.56 = 0.56$

Sol 3: The numbers on the number line are:



0.8 is nearest to 1

Sol 4: d) 1.1

Sol 5: $0.6 = 0.60$

Sol 6: 14.67, 34.73, 56.43, 65.98, 89.23

Sol 7: a) $0.22 > 0.2$ b) $6.33 < 6.333$

Sol 8: Bus

Sol 9: b) 0.07

Sol 10: $0.125 < 0.75$

FUN FACT

- 1) The fractional part of a decimal number is given by the part after the decimal point.
- 2) As we move towards left from the decimal point, the place value of digits gets multiplied by 10.
- 3) As we move towards right from the decimal point, the place value of digits gets divided by 10.

