

Get better at Math.
Get better at
everything.



Come experience the Cuemath methodology and ensure your child stays ahead at math this summer.



**Adaptive
Platform**



**Interactive Visual
Simulations**



**Personalized
Attention**

For Grades 1 - 10



LIVE online classes
by trained and
certified experts.

Get the Cuemath advantage

Book a FREE trial class

Basic Division Worksheet-3

1) Match the following:

1	$21 \div 7$	a.	50
2	$24 \div 4$	b.	7
3	$35 \div 5$	c.	3
4	$100 \div 2$	d.	6

2) How will you organize 48 children in 6 groups for a zoo trip such that there will be an equal number of children in each group?



3) State true or false.

- a) When we divide 30 by 4, the remainder is 2.
- b) On dividing 300 by 10, 3 is the quotient.

4) Write two division facts by using the numbers 36, 3 and 12.

5) Divide the following and write the values of quotient and remainder.

- a) $33 \div 3$
- b) $78 \div 7$

6) Fill color in the correct answer:

$$777 \div 3$$

259

222

212

250

200

7) Tick (✓) the correct option.

Which two numbers, when divided, can give the answer 8? (More than one answer can be marked)

- ☐ 35, 5
- ☐ 104, 13
- ☐ 678, 9
- ☐ 80, 10
- ☐ 18, 2

8) Find the missing value:

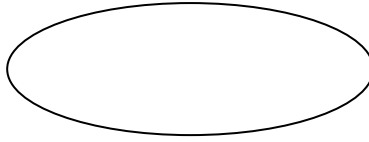
$$44 \div \underline{\quad} = 4$$
$$\underline{\quad} \div 3 = 3$$

9) You must know that every division fact can be written as multiplication fact, as division and multiplication are inverse operations. For example,

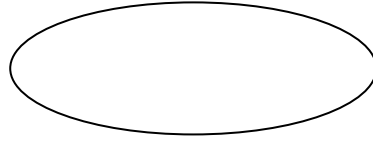
$$15 \div 5 = 3, \text{ which can be written as } 3 \times 5 = 15.$$

In the same way, divide the given numbers and write multiplication facts for the given division statements.

$56 \div 8 = \underline{\quad}$



$121 \div 11 = \underline{\quad}$



10) \$800 is distributed equally among 5 people. How much money will each person get?



When you learn math
in an interesting way,
you never forget.



25 Million

Math classes &
counting

100K+

Students learning
Math the right way

20+ Countries

Present across USA, UK,
Singapore, India, UAE & more.

Why choose Cuemath?

"Cuemath is a valuable addition to our family. We love solving puzzle cards. My daughter is now visualizing maths and solving problems effectively!"

- Gary Schwartz

"Cuemath is great because my son has a one-on-one interaction with the teacher. The instructor has developed his confidence and I can see progress in his work. One-on-one interaction is perfect and a great bonus."

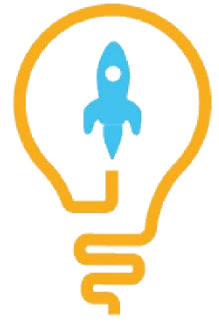
- Kirk Riley

"I appreciate the effort that miss Nitya puts in to help my daughter understand the best methods and to explain why she got a problem incorrect. She is extremely patient and generous with Miranda."

- Barbara Cabrera

Get the Cuemath advantage

Book a FREE trial class

**ANSWERS**

1)	1-c, 2-d, 3-b, 4-a
2)	8 children in each group
3)	True, False
4)	$36 \div 3 = 12$, $36 \div 12 = 3$
5)	Quotient =11, Remainder=0 Quotient =11, Remainder=1
6)	259
7)	104, 13 and 80, 10
8)	11, 9
9)	7 , $7 \times 8 = 56$ 11 , $11 \times 11 = 121$
10)	\$160

FUN FACT

1. Symbol used for [division](#) is \div or $/$.
2. Division is one of the four basic arithmetic operations along with [addition](#), [subtraction](#) and multiplication.
3. [Multiplication](#) is the inverse operation of division.

