

Get better at Math.
Get better at
everything.



Come experience the Cuemath methodology and ensure your child stays ahead at math this summer.



**Adaptive
Platform**



**Interactive Visual
Simulations**



**Personalized
Attention**

For Grades 1 - 10



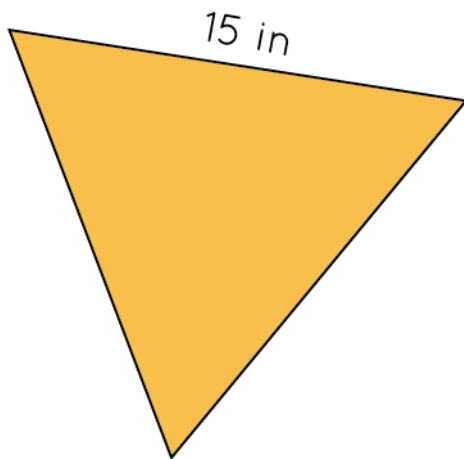
LIVE online classes
by trained and
certified experts.

Get the Cuemath advantage

Book a FREE trial class

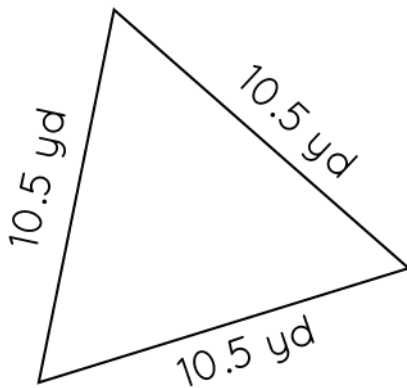
Area and Perimeter Of Triangles Worksheets

- 1) What is the area of a triangle having:
base = 10 units and height = 12 units.
- 2) Find the area of an equilateral triangle given below:



- 3) The side of an equilateral triangle is 16 units. What is its doubled area?
- 4) If the base of a triangle becomes three times its height. What is the new area of a triangle?
- 5) If the side of an equilateral triangular park is 20 units. What is its half area?
- 6) The side lengths of a triangle are 200 mm, 600 mm, and 700 mm. Determine its perimeter.
- 7) The two sides of a triangle are 14 units and 12 units. The perimeter of the triangle is 36 units. Determine its third side.
- 8) Mia has a piece of wire which is 30 inches long. She used the wire to form an equilateral triangle. Find the length of each side of the equilateral triangle.

9) Calculate the perimeter of the given figure:



10) The sides of a triangle are in the ratio $14:18:26$, and its perimeter is 580 cm. Find the area. Also, find the altitude corresponding to the smallest side.

When you learn math
in an interesting way,
you never forget.



25 Million

Math classes &
counting

100K+

Students learning
Math the right way

20+ Countries

Present across USA, UK,
Singapore, India, UAE & more.

Why choose Cuemath?

"Cuemath is a valuable addition to our family. We love solving puzzle cards. My daughter is now visualizing maths and solving problems effectively!"

- Gary Schwartz

"Cuemath is great because my son has a one-on-one interaction with the teacher. The instructor has developed his confidence and I can see progress in his work. One-on-one interaction is perfect and a great bonus."

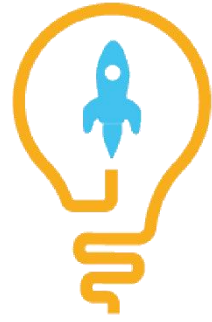
- Kirk Riley

"I appreciate the effort that miss Nitya puts in to help my daughter understand the best methods and to explain why she got a problem incorrect. She is extremely patient and generous with Miranda."

- Barbara Cabrera

Get the Cuemath advantage

Book a FREE trial class

**ANSWERS**

1. 60sq. units	6. 1500 mm
2. 97.42 sq. in	7. 10 units
3. 221.7 sq. units	8. 10 inches
4. 1.5 height \times height	9. 31.5 yards
5. 86.6 sq units	10. Area = 11981.1 cm , height = 171.16 cm

FUN FACT

1. Perimeter of a circle is referred to as its Circumference.
2. Area of an isosceles triangle and equilateral triangle can be derived from Heron's formula.
3. Area is measured in square units.

