

Get better at Math.  
Get better at  
everything.



Come experience the Cuemath methodology and ensure your child stays ahead at math this summer.



**Adaptive  
Platform**



**Interactive Visual  
Simulations**



**Personalized  
Attention**

For Grades 1 - 10



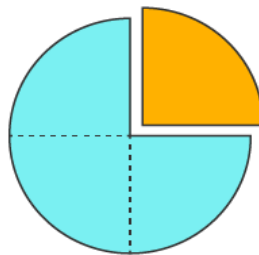
LIVE online classes  
by trained and  
certified experts.

Get the Cuemath advantage

**Book a FREE trial class**

**Addition and Subtraction Worksheet with Decimals-3**

1. What will you get after adding 3.5 to the difference of 5.9 and 12.08?
  - a) 9.58
  - b) 9.78
  - c) 9.68
  - d) 9.48
2. Emma is confused about how to add a decimal to a whole number. Can you help her in addition of 98.76 to 8? Help her find the answer.
3. Fill in the blanks with correct decimal numbers.
  - a) 21.84 is the difference of 45.76 and \_\_\_\_.
  - b) The sum of 56.1 and 420.7 is \_\_\_\_.
4. If the perimeter of a triangle is 34 units and the lengths of two of its sides are 16.6 units and 8.97 units, find the length of the third side.
5. Solve:  $96.73 + 45.91 - 38.567$
6. The following circle is shaded with two colors: blue and orange.
  - a) Write the decimal representation for each part.
  - b) Which part is shaded the most and by how much?



7. Put the signs:  $>$ ,  $<$  or  $=$  to make the following statements true.
- a)  $7.22 + 7.02$  \_\_\_  $7.72 - 7.2$
- b)  $8.8 - 8.0$  \_\_\_  $0.88$
8. Jane has two dogs, Fiffy and Lemon. Fiffy weighs 12.45 pounds whereas Lemon weighs 9.56 pounds. How much more did Fiffy weigh than Lemon?
9. A car covers 485.65 miles in 4 hrs. If it covers 283.98 miles in the first 3 hours, how much distance will it cover in the last one hour?



10. Olivia had \$35 with her. She bought a notebook for \$6.76 and an umbrella for \$8.09 . How much money is still left with her?



When you learn math  
in an interesting way,  
you never forget.



**25 Million**

Math classes &  
counting

**100K+**

Students learning  
Math the right way

**20+ Countries**

Present across USA, UK,  
Singapore, India, UAE & more.

## Why choose Cuemath?

"Cuemath is a valuable addition to our family. We love solving puzzle cards. My daughter is now visualizing maths and solving problems effectively!"

- Gary Schwartz

"Cuemath is great because my son has a one-on-one interaction with the teacher. The instructor has developed his confidence and I can see progress in his work. One-on-one interaction is perfect and a great bonus."

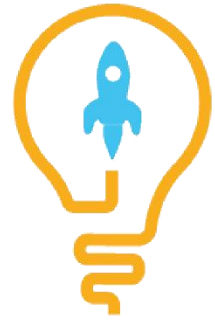
- Kirk Riley

"I appreciate the effort that miss Nitya puts in to help my daughter understand the best methods and to explain why she got a problem incorrect. She is extremely patient and generous with Miranda."

- Barbara Cabrera

Get the Cuemath advantage

**Book a FREE trial class**

**ANSWERS**

1)	9.68
2)	106.76
3)	a) 23.92 or 67.6 b) 476.8
4)	8.43 units
5)	104.073
6)	a) 0.75 and 0.25 b) blue by 0.5
7)	$>$ , $<$
8)	2.89 pounds
9)	201.67 miles
10)	\$20.15

## FUN FACT

1. Even though the time and angle measure is represented in decimal format, they cannot be added or subtracted as decimals.
2. Addition of decimal numbers is commutative, that is, for any two decimal numbers  $a$  and  $b$ :  
 $a+b=b+a$
3. Adding any two decimals may result in a decimal or a whole number.

